



Why Choose Rexnord?

When it comes to providing highly engineered products that improve productivity and efficiency for industrial applications worldwide, Rexnord is the most reliable in the industry. Our commitment to customer satisfaction and superior value extends to every area of our business.

Delivering Lowest Total Cost of Ownership

The highest quality products are designed to help prevent equipment downtime, increase productivity and deliver dependable operation.

Valuable Expertise

An extensive product offering is accompanied by global sales specialists, customer service and maintenance support teams, available anytime.

Solutions to Enhance Ease of Doing Business

Our commitment to operational excellence means you benefit from getting the right products to the right place at the right time.

Why Choose UltraMax Gear Drives?

The Right Choice

UltraMax[®] is designed to meet the tough challenges of medium and heavy-duty, concentric gear reducer operation. Outstanding design, durability, long-life, easy maintenance and overall efficiency make UltraMax the right choice.

Superior Performance

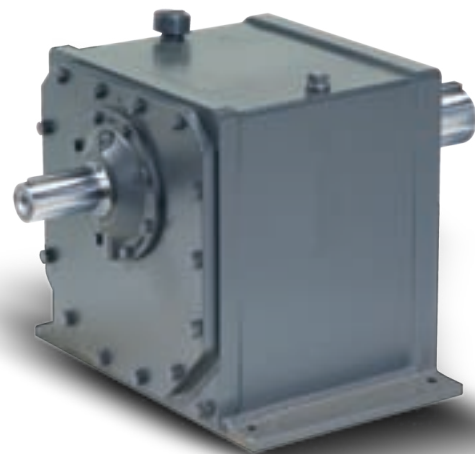
98.5% efficient helical gears provide smooth operation with less noise and reduced vibration. Taper roller bearings provide superior load carrying capacity. Grease-purgeable seal cavities at all seal locations protect from grit and abrasives.

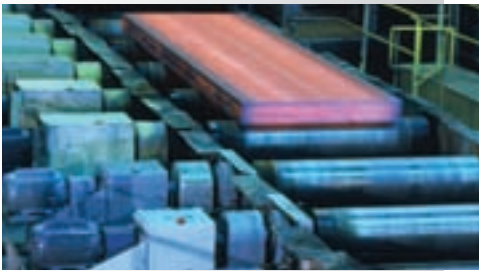
Space Efficient

Compact design permits retrofitting of other reducers with minimal modifications. Adapters for direct interchange are available.

Application Flexibility

A robust housing design allows easy access to rotating elements for ratio changes. UltraMax offers the high torque, power and reliability of a parallel shaft gear drive with the availability of a gearmotor and accessories to accommodate any application.





UltraMax Gear Drives

- 12 unit sizes up to 600,000 lb-in (68 kNm)
- Reductions from 1.5:1 to 985:1
- Motor mounting accessories to suit NEMA and IEC motors
- Cast iron (2040 through 2050) and fabricated steel (2060 through 2130) are standard for housings
- Advanced gear technology: carburized and ground gearing in AGMA quality 10 or better
- Foot mount design
- Inch and IEC (metric) shaft extensions and keyways
- Continuous-duty ratings (AGMA)
- Fan options for cooling
- Three-year, heavy-duty warranty

Process & Motion Control Products & Solutions For Your Business

- Bearing
- Coupling
- Gear
- Industrial Chain
- Conveying Equipment
- FlatTop
- Product Services

Industries Served

- Mining
- Forest Products
- Aggregate
- Food & Grain
- Cement
- Primary Metals
- Power Generation

