

Rexnord Combi-X Corner Track System



Maximize Bottling Line Productivity

Rexnord Combi-X Corner Tracks for Long Wear Life and Reduced Noise

To expand its trusted Rexnord Magnetflex® Corner Track System offering of nearly 40 years, Rexnord provides customers with the innovative Combi-X Corner Track System design using proven ULF™ (Ultra Low-Friction) material to reduce friction, noise and wear. The Combi-X Corner Track System is used by original equipment manufacturers and end users in beverage industry applications, such as high-speed fill lines.

Choose the Rexnord Combi-X Corner Track System

An advantage of the Rexnord Combi-X Corner Track System is the significant reduction of energy dissipated in the curve, resulting in a 70 percent reduction of energy consumption compared to traditional Combi curves. Rexnord offers unlimited curve solutions because Rexnord Combi-X Corner Track System upper parts are completely made from ULF material. This allows any possible curve design with the superior benefits of the ULF material. Additionally the new design doesn't contain polyvinyl chloride (PVC); as a result, it can be recycled as polyethylene (PE) once magnets are disassembled. These advantages, backed by our more than 75 years of experience in the beverage industry, are why customers depend on Rexnord.

The Rexnord Combi-X Corner Track System is equipped with the proven Rexnord Combi Chain retention design.



Applications



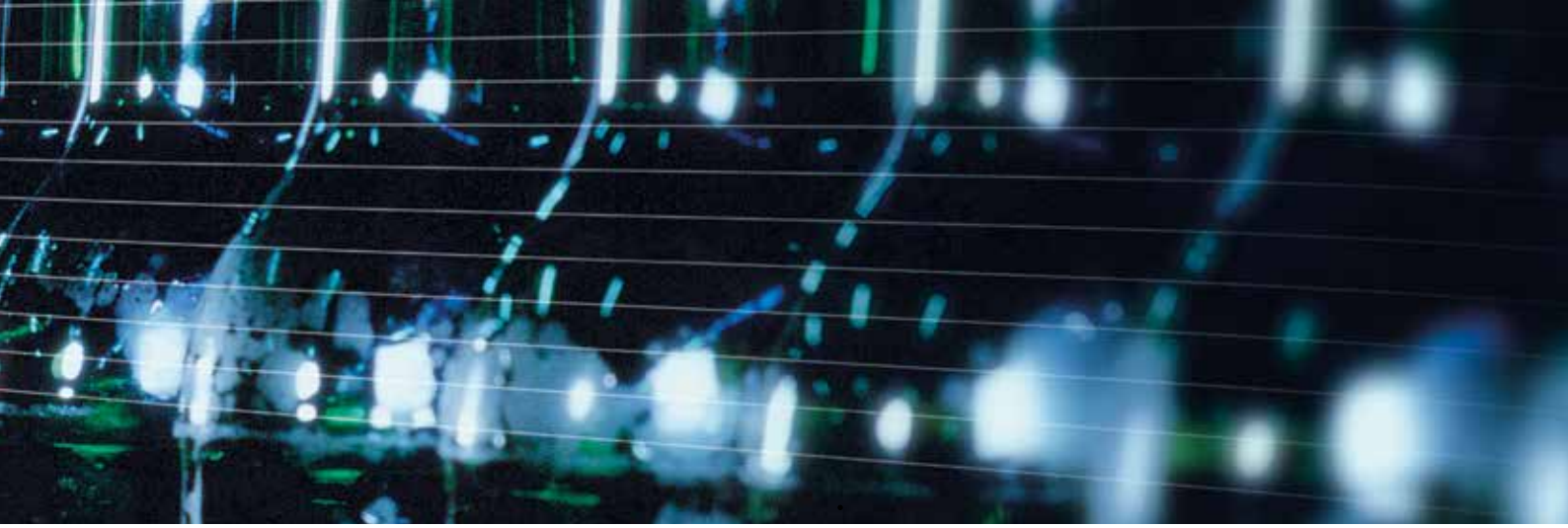
Lubricated conveyors

Can be used in lubricated conveyors where Nylatron® corners are not sufficient



Run dry

Minimized noise level in dry-running applications



Rexnord Combi-X Corner Track System Features and Benefits

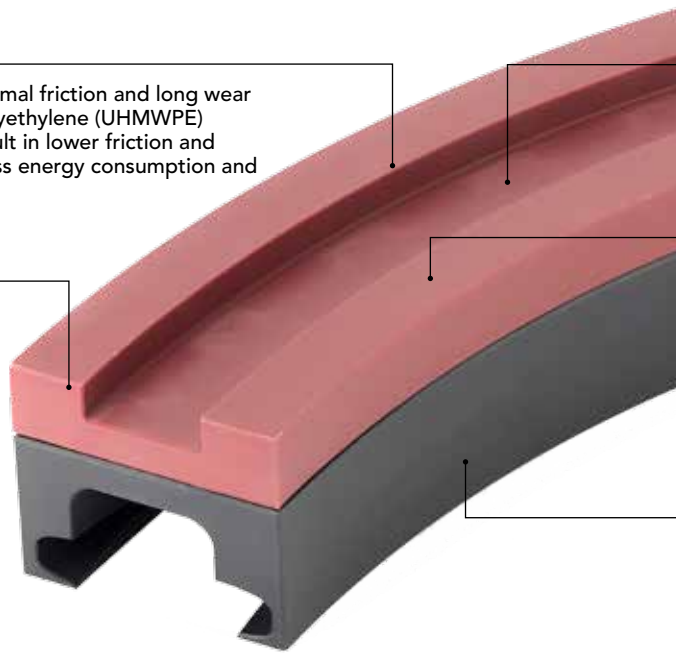
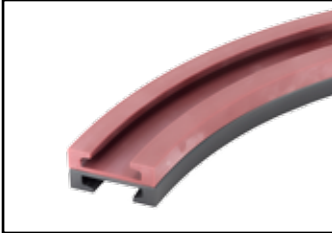
ULF One-Piece Upper Part

ULF one-piece upper part offers minimal friction and long wear life. Ultra High Molecular Weight Polyethylene (UHMWPE) combined with special lubricants result in lower friction and longer curve wear life, resulting in less energy consumption and lower maintenance cost.

New Construction Design

ULF material, makes optimum use of different materials.

Tab and Bevel Executions available



Rexnord Combi Chain Retention Design

Interchangeable with all Rexnord combi chain retention curve designs. Any curve execution is now feasible.

Available for Heavy-Duty Hinge Magnetflex Chain

Due to the new construction design, Rexnord Combi-X Corner Track System Curves are now available for heavy-duty hinge Magnetflex Chain.

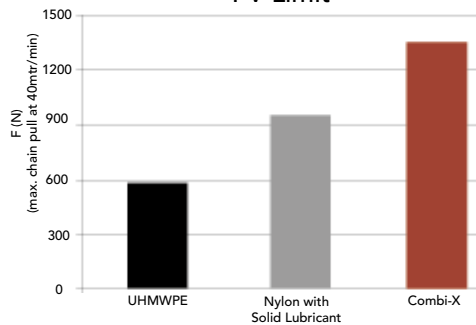
Return Section in Black UHMWPE

For wear and abrasion resistance.

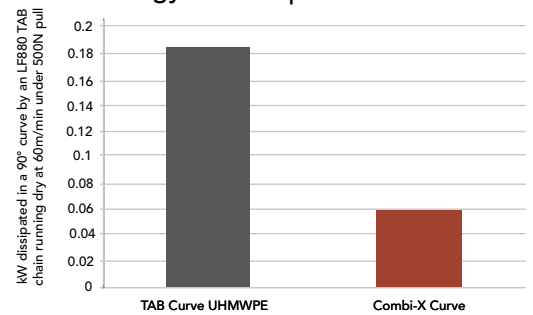
ULF Material

Combi-X has improved PV (Pressure-Velocity) properties in comparison to lubricated nylon curve material. This means the curves can be applied in high-speed, dry-running applications, reducing noise.

PV-Limit



Energy Consumption in the Curve



Rexnord Combi-X Corner Track System Applications

Curve Material	Lubricated, Clean, Stainless Steel Chains, Plastic Chains	Lubricated, Abrasive, Stainless Steel Chains	Lubricated Abrasive, Plastic Chains	Dry Running, Low-Speed, Abrasive, Steel Chains	Dry Running, Low-Speed, Clean Plastic Chains	Dry Running, High-Speed, Clean Plastic Chains	Dry Running, High-Speed, Abrasive Plastic Chains
Combi-X							
UHMWPE							
Nylon with Solid Lubricant							

Best Choice
Optional
Not recommended



866-REXNORD /866-739-6673 (Within the U.S.)
+31 174 445 111 (Outside the U.S.)
www.rexnord.com

Why Choose Rexnord?

When it comes to providing highly engineered products that improve productivity and efficiency for industrial applications worldwide, Rexnord is the most reliable in the industry. Commitment to customer satisfaction and superior value extend across every business function.

Delivering Lowest Total Cost of Ownership

The highest quality products are designed to help prevent equipment downtime and increase productivity and dependable operation.

Valuable Expertise

An extensive product offering is accompanied by global sales specialists, customer service and maintenance support teams, available anytime.

Solutions to Enhance Ease of Doing Business

Commitment to operational excellence ensures the right products at the right place at the right time.

REXNORD

Rexnord Company Overview

Rexnord is a growth-oriented, multi-platform industrial company with leading market shares and highly trusted brands that serve a diverse array of global end markets.

Process & Motion Control

The Rexnord Process & Motion Control platform designs, manufactures, markets and services specified, highly engineered mechanical components used within complex systems where our customers' reliability requirements and the cost of failure or downtime are extremely high.

Water Management

The Rexnord Water Management platform designs, procures, manufactures and markets products that provide and enhance water quality, safety, flow control and conservation.