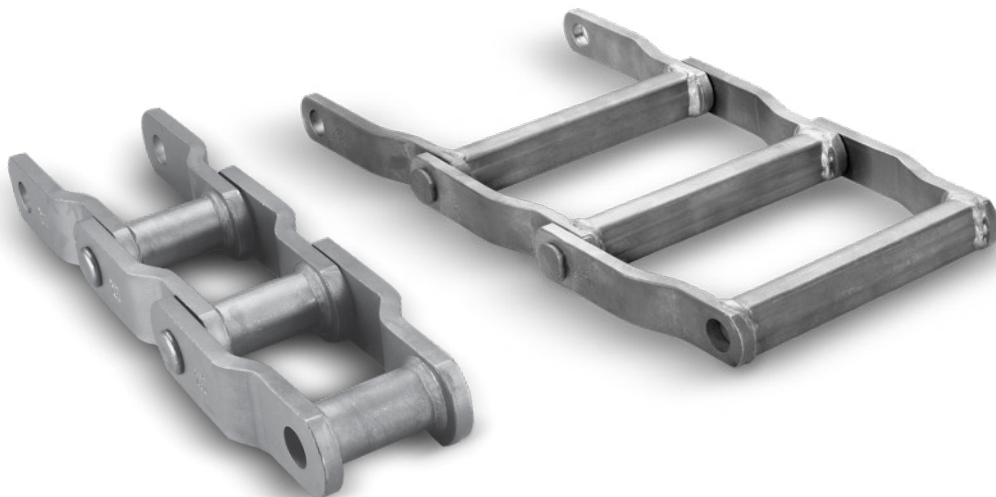


Rex[®]



REX[®] WELDED STEEL CHAIN

OVERVIEW



RegalRexnord[™]

Rex[®] Welded Steel Chain

REGAL REXNORD™ WELDED STEEL CHAIN OFFERING

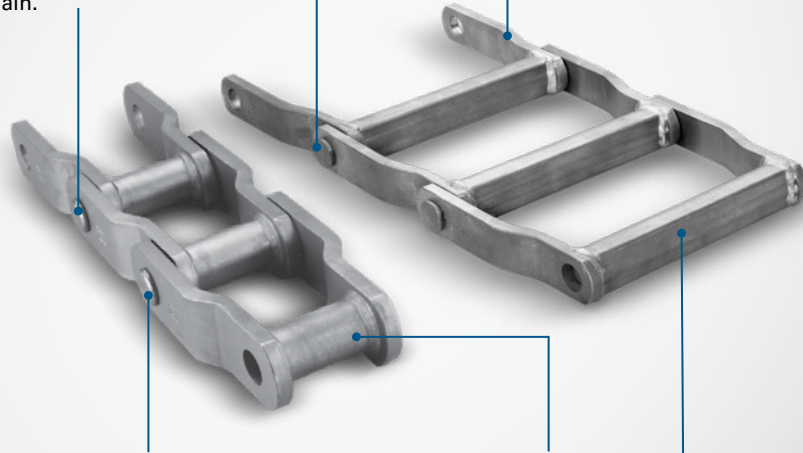
Regal Rexnord has been providing solutions for tough applications for years. We understand that when replacement parts are needed, time matters. Rex welded steel chain is designed to reduce costly downtime when replacement parts are needed the most.

- Up to 300 feet of any configuration of stock riveted chain and attachments can be welded, assembled and shipped within three to five days.
- Instant availability of welded steel attachment chain.
- 22 standard sizes in both narrow- and wide-mill chain are available for quick delivery.
- Solid bushings on narrow-mill chain and one-piece formed barrel on wide-mill chain.
- Advanced design features are furnished as standard on all chain.
- Optimum interference fits between pin and sidebar.
- Selective induction-hardened pin.
- Additional made-to-order chain and attachments available upon request.

REX[®] WELDED STEEL CHAIN FEATURES AND BENEFITS

Narrow- and wide-mill chain comes standard with high press fits between the pins and sidebar holes. This feature greatly improves the fatigue life of the chain.

All components are completely through-hardened as standard. This feature greatly enhances chain wear life.



Narrow-mill series chain comes standard with a selectively induction-hardened pin. This feature significantly improves the wear life of the chain.

Narrow- and wide-mill series chain are furnished standard with one-piece barrels. This significant design enhancement extends the performance of the chain.



What makes Rex® the highest performing welded steel chain?

MAXIMIZED WEAR LIFE

- Rex Selective Induction-Hardened (SIH) chain pin process involves super hardening only the portion of the chain rivet that wears as the chain articulates over the sprockets. The remainder of the pin is held at the through-hardening levels to assure chain toughness and resistance to breakage. This treatment is standard on the Rex WHX Narrow-Mill Chain.
- Optional induction-hardened sliding surfaces:
 - Rex Standard Through-Hardened Chain provides two times greater wear life than the industry standard.
 - Optional induction-hardened sidebars give four times the wear life.
- To improve wear life, Rex narrow mill chain has solid barrels and Rex Wide-Mill Chain has one-piece formed barrels.

MAXIMIZED CHAIN STRENGTH

- High-technology welding process, proper weld stress relieving and heat treatment, and destructive testing for weld strength and penetration ensure maximum chain strength.
- Rex pins and rivets have engineered press fits that create optimal residual stress in sidebars and greatly increase chain fatigue life. (See chart below.)

Importance of Heat Treatment

Heat Treatment	Not Hardened	Through-Hardened	Induction Hardened
Hardness RC (typ)	20	35	60

Selectively induction hardened pins increase pin wear life.

Solid barrels provide maximum resistance to impact wear.

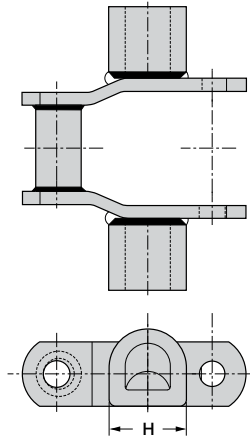
Quality welded steel links tested for weld strength and penetration.

Rex[®] Welded Steel Chain

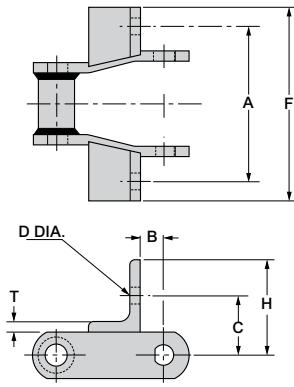
Welded Steel Chain Attachments – Dimensions (Inch)

Chain Number	Attachment	A	B	C	D Bolt Diameter	D Bolt Hole	E	F	H	T
WH78	A1	2.00	1.25	0.81	3/8	0.41	–	2.50	1.25	0.25
WH78	A2	2.00	0.41	0.81	3/8	0.41	1.13	2.50	2.00	0.25
WH78	A22	1.88	1.31	–	3/8	0.41	–	2.50	1.00	0.38
WH78	K1	4.00	1.25	0.81	3/8	0.44	–	5.00	1.25	0.25
WH78	K2	4.00	0.41	0.81	3/8	0.44	1.13	5.00	2.00	0.25
WH78	F2	3.75	0.56	1.44	3/8	0.41	–	4.69	2.31	0.25
WH82	A1	2.00	1.25	0.81	3/8	0.43	–	2.50	1.25	0.25
WH82	A2	2.13	0.75	0.88	3/8	0.41	1.31	2.69	2.25	0.25
WH82	K2	4.25	0.75	0.88	3/8	0.41	1.31	5.38	2.25	0.25
WHX106	A24	4.00	2.88	–	13/16	1.75	–	5.94	2.50	0.50
WHX111	S1	–	1.00	4.25	–	–	–	5.00	–	0.38
WHX124	A2	2.63	0.88	1.13	3/8	0.41	1.94	3.19	3.00	0.38
WHX124	K2	5.25	0.88	1.13	3/8	0.41	1.94	6.38	3.00	0.38
WHX132	A25	3.75	1.63	1.50	1/2	0.56	2.75	4.59	4.25	0.50
WHX132	C11	–	–	3.00	–	–	–	11.00	3.00	–
WHX132	K25	7.50	1.63	1.50	1/2	0.56	2.75	9.19	4.25	0.50
WHX132	M1	–	–	2.00	–	–	–	3.00	–	0.50
WHX132	S1	–	1.38	5.00	–	–	–	6.00	–	0.50
WHX150	C11	–	–	3.00	–	–	–	11.00	3.00	–
WHX150	S1	–	1.38	5.25	–	–	–	6.50	–	0.50
WHX155	S1	–	–	3.00	–	–	–	4.25	–	0.56
WHX155	S17	–	–	3.00	–	–	–	4.25	–	0.50
WDH110	W17	17.00	2.63	–	–	–	–	1.50	–	0.38
WDH112	W17	17.00	3.25	–	–	–	–	1.50	–	0.38
WDH116	W22	22.00	3.78	–	–	–	–	1.75	–	0.38
WDH120	W17	17.00	2.50	–	–	–	–	2.00	–	0.50
WDH480	W22	22.00	3.25	–	–	–	–	2.00	–	0.38
WDH580	W22	22.00	3.25	–	–	–	–	2.00	–	0.38

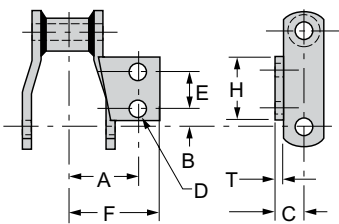
REX® WELDED STEEL CHAIN ATTACHMENTS



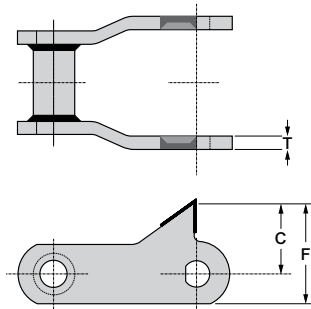
C11



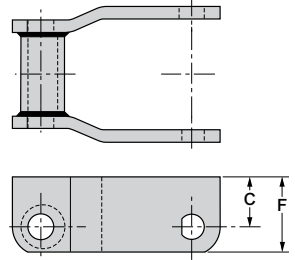
F2



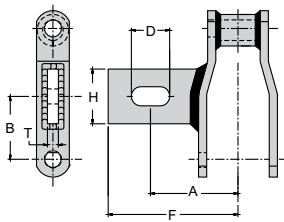
A2 & A25



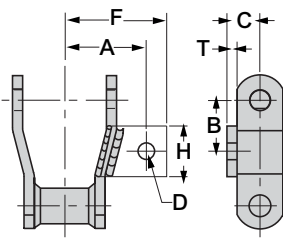
S17



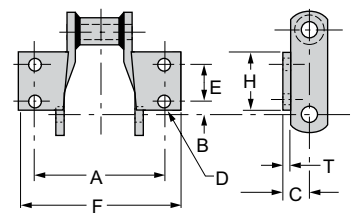
M1



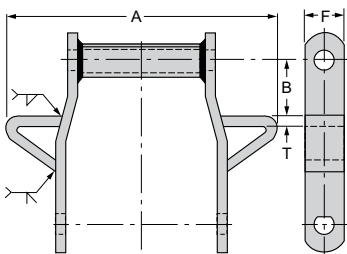
A12, A22 & A24



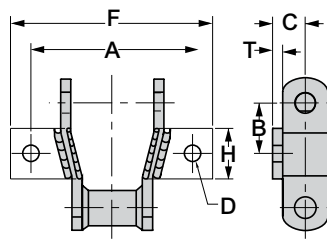
A1



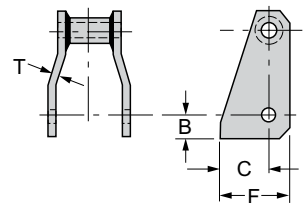
K2 & K25



Wing



K1

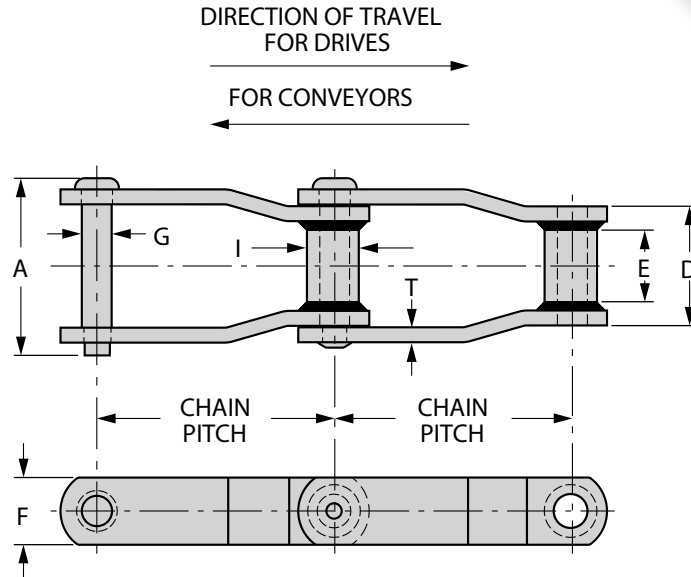
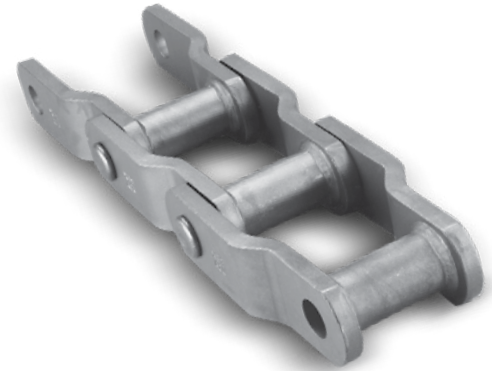


S1

Rex[®] Welded Steel Chain

NARROW SERIES WH AND WHX

- WH Chain has all parts through hardened.
- WHX Chain has through hardened parts and selectively induction-hardened rivets.

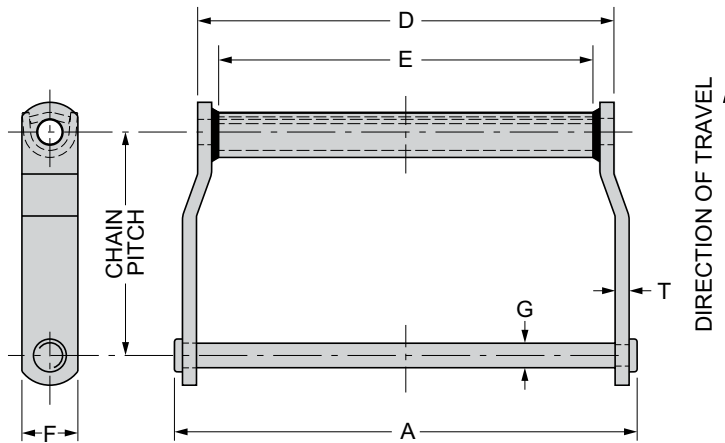
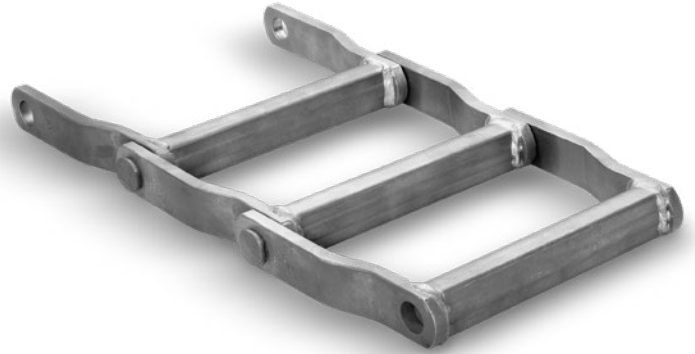


Narrow Series (WH and WHX) — Dimensions (Inch)

Chain Number	Average Pitch	A	E	Sidebars	Pin	Barrel	Minimum Ultimate Strength	Rated Working Load	Average Weight per foot	Sprocket Number
				T F	G	D I				
WH78	2.609	2.98	1.12	0.25 1.13	0.50	2.00 0.88	25,500	3,500	4	78
WH82	3.075	3.25	1.25	0.25 1.25	0.56	2.25 1.22	29,500	4,400	6	103
WHX124	4.000	4.18	1.63	0.38 1.50	0.75	2.81 1.44	50,500	7,350	9	H124
WHX124HD	4.063	4.82	1.63	0.50 2.00	0.88	3.00 1.63	80,000	9,150	14	H124
WHX111	4.760	4.79	2.25	0.38 1.50	0.75	3.38 1.44	50,500	8,850	8	111
WHX106	6.000	4.18	1.63	0.38 1.50	0.75	2.81 1.44	50,500	7,350	7	106
WHX132	6.050	6.31	3.00	0.50 2.00	1.00	4.38 1.75	85,000	15,000	14	132
WHX150	6.050	6.31	3.00	0.50 2.50	1.00	4.38 1.75	90,000	15,000	16	132
WHX155	6.050	6.48	2.75	0.56 2.50	1.13	4.38 1.75	102,000	17,500	19	132
WHX157	6.050	6.68	2.75	0.63 2.50	1.13	4.63 1.75	117,000	18,200	20	132

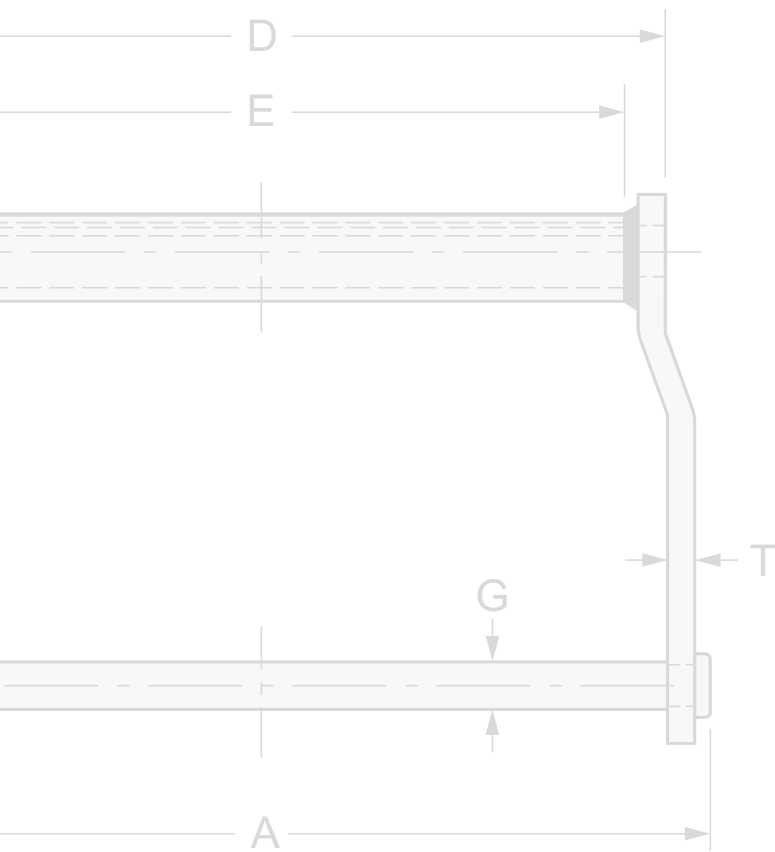
WIDE SERIES WDH

- WDH chain have medium carbon steel one-piece extruded barrels.
- Heat treated medium carbon barrels and sidebars provide two times the wear resistance of competitive non heat treated chain.



Wide Series Standard (WDH) – Dimensions (Inch)

Chain Number	Average Pitch	A	E	Sidebars T	F	Pin G	Barrel D	Minimum Ultimate Strength	Rated Working Load	Average Weight per foot	Sprocket Number
WDH110	6.000	11.80	9.00	0.38	1.50	0.75	10.38	55,000	10,000	12	H110
WDH120	6.000	12.10	8.75	0.50	2.00	0.88	10.25	79,000	15,000	20	H120
WDH112	8.000	11.80	9.00	0.38	1.50	0.75	10.38	55,000	10,000	10	H112
WDH116	8.000	15.50	13.00	0.38	1.75	0.75	14.13	59,000	11,500	13	H116
WDH480	8.000	14.60	11.20	0.50	2.00	0.88	12.75	79,000	15,000	18	H480
WDH580	8.000	14.60	11.20	0.50	2.00	1.00	12.75	108,000	20,500	18	H480
WDH2210	6.136	11.90	9.00	0.38	1.50	0.75	10.38	55,000	10,000	11.5	H110
WDH2380	8.161	14.60	11.25	0.50	2.00	0.88	12.75	79,000	15,000	18	H480



Rex[®]

Industrial Powertrain Solutions Regal Rexnord

Contact us: [rexnord.com/contact](https://www.rexnord.com/contact)

[regalrexnord.com](https://www.regalrexnord.com) [rexnord.com](https://www.rexnord.com)

The proper selection and application of products and components, including assuring that the product is safe for its intended use, are the responsibility of the customer. To view our Application Considerations, please visit <https://www.regalrexnord.com/Application-Considerations>.

To view our Standard Terms and Conditions of Sale, please visit <https://www.regalrexnord.com/Terms-and-Conditions-of-Sale> (which may redirect to other website locations based on product family).

"Regal Rexnord" is not indicative of legal entity. Refer to product purchase documentation for the applicable legal entity. Regal Rexnord, Rexnord and Rex are trademarks of Regal Rexnord Corporation or one of its affiliated companies. © 2009, 2023 Regal Rexnord Corporation, All Rights Reserved. MCB23045E • Form# EC1-001E

 **RegalRexnord**[™]