



Design Features include:

- Factory-assembled disc module for reliability & performance
- Easy installation and reduced wear
- High torsional stiffness
- High speed
- High misalignment capacity
- Reduced reactionary forces
- Low inertia

Applications:

- Reciprocating torques
- Test Benches

Industry Compliant:

- ATEX II 2GD c T6
- DIN 740

Special design options:

- Special hub or flange connections
- Koniclamp integrated clamping hub
- Special alloys, stainless steel, aluminum and carbon fiber versions
- Custom coatings for corrosion resistance
- Electrically insulated

Rexnord BSD Modulflex Couplings

Series 9x16-x-14xx B

for HBM torque meters T10FS, T12, T40, TB2

Customer-focused Solutions.

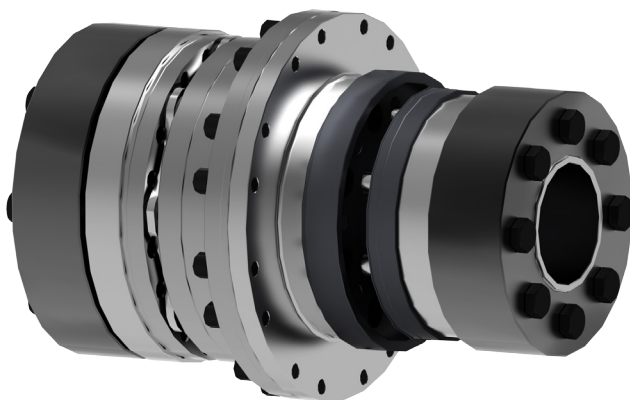
Reliable Performance.

Trusted Brands.

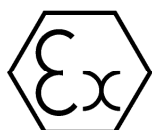
You want a trusted name when it comes to providing engineered power transmission products that improve productivity and efficiency. Rexnord provides superior products for your industrial applications world wide. We work closely with you to reduce maintenance costs, eliminate redundant inventories and prevent equipment downtime.

BSD Modulflex

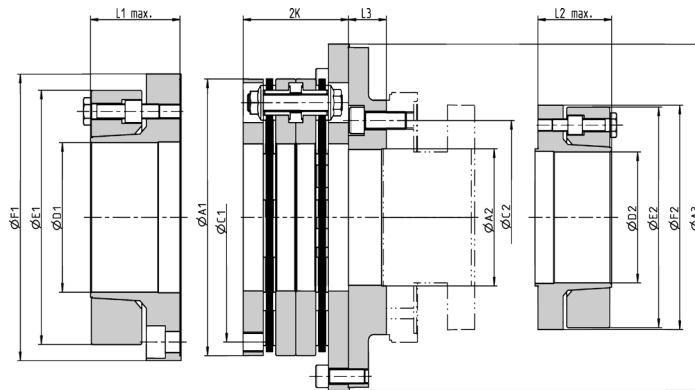
Modulflex® is an all-metal, flexible disc coupling featuring factory-assembled, interference-fit bolt joints unlike standard disc couplings. In addition to its modular design, Modulflex delivers higher speeds, greater torque transmission and easier installation.



Modulflex® for HBM Torque Meter
Series 9x16-x-14xx B



ATEX II 2GD c T6



HBM Torque Flange Size	Modulflex Coupling Size	Nominal Torque Steel T_{KN} Nm	Nominal Torque Alu T_{KN} Nm	Max. Torque Steel T_{Kmax} Nm	Max. Torque Alu T_{Kmax} Nm	Misalignment			Max. Speed Steel (1) n_{max} min ⁻¹	Max. Speed Alu (1) n_{max} min ⁻¹
						Axial ΔK_{amax} mm	Radial ΔK_{rmax} mm	Angular ΔK_{wmax} °		
0,1-0,2 kNm	4,5	450	400	800	560	±2,4	0,17	0,6°	39000	46000
0,5-1 kNm	17	1700	1500	2280	2200	±3	0,17		23200	24000
2 kNm	45	4500	3900	4260	4870	±4	0,23		18400	20000
3 kNm	45	4500	3900	4950	4870	±4	0,23		18400	20000
5 kNm	64	6400	6100	8200	8000	±4,2	0,26		15600	15000
10 kNm	110	11000	9800	14200	13870	±5	0,3		14500	14000

HBM Torque Flange Size	Modulflex Coupling Size	Diameters in mm										
		A1 _{js}	A2 ^{H7}	C1	C2	D1 max	D2 max	A3 max	E1 max	E2 max	F1 max	F2 max
0,1-0,2 kNm	4,5	88	57	77	84	50	50	124	95	95	95	99
0,5-1 kNm	17	146	75	134	101,5	90	75	186	155	136	155	132
2 kNm	45	200	90	182	130	120	90	244	204	155	205	150
3 kNm	45	200	90	182	130	120	90	244	204	155	205	150
5 kNm	64	222	110	200	155,5	135	105	278	238	204	230	190
10 kNm	110	248	140	224	196	155	135	303	267	238	260	226

HBM Torque Flange Size	Modulflex Coupling Size	Dimensions in mm				
		2K Steel	K Alu	L1 max (2)	L2 max (2)	L3
0,1-0,2 kNm	4,5	65	66,2	42	45	26
0,5-1 kNm	17	65	66,6	62	56	30
2 kNm	45	88	90,2	76	62	30
3 kNm	45	88	90,2	76	62	30
5 kNm	64	100	102,6	98	76	36
10 kNm	110	116	118,8	110	99	35

Product key

9	x	1	6	-x-	1	4xx	B
1	2	3	4	5	6	7	8
1	Product Type: Modulflex coupling						
2	Material (e.g. 2 = Steel; 8 = Aluminium)						
3	Design: Module with 2 Koniclamp clamping hubs						
4	Application: Test Benches						
5	Size (e.g. 45)						
6	Modulflex element design: double element						
7	Koniclamp hub design: 2 Koniclamp clamping hubs						
8	Mounting position of the torque meter: B as per HBM instructions						

(1) Balancing is required for most applications. Please clarify with us prior to ordering
 (2) Exact length depending on shaft diameter