

### Why Choose Rexnord?

When it comes to providing highly engineered products that improve productivity and efficiency for industrial applications worldwide, Rexnord is the most reliable in the industry. Commitment to customer satisfaction and superior value extend across every business function.

#### Delivering Lowest Total Cost of Ownership

The highest quality products are designed to help prevent equipment downtime and increase productivity and dependable operation.

#### Valuable Expertise

An extensive product offering is accompanied by global sales specialists, customer service and maintenance support teams, available anytime.

#### Solutions to Enhance Ease of Doing Business

Commitment to operational excellence ensures the right products at the right place at the right time.

# Modulflex Coupling Series 9xxx for Marine Applications

#### Rexnord Corporation

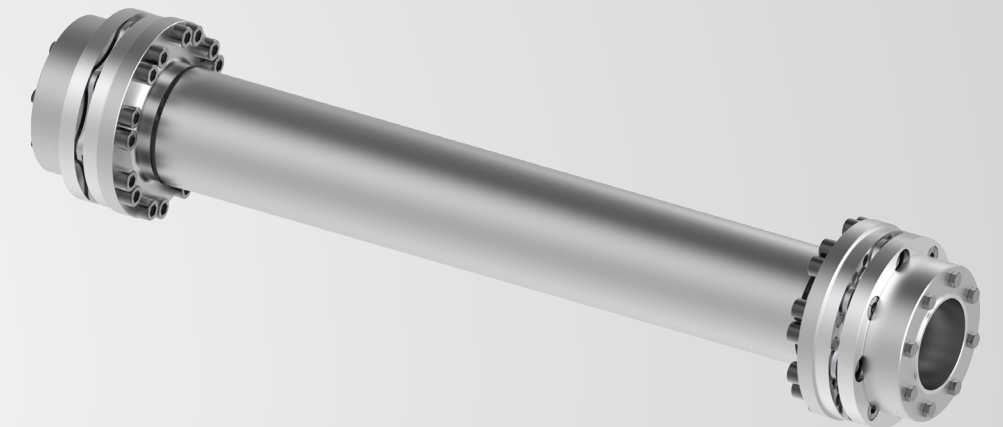
Rexnord is a growth-oriented, multi-platform industrial company with leading market shares and highly trusted brands that serve a diverse array of global end markets.

#### Process and Motion Control

The Rexnord Process and Motion Control platform designs, manufactures, markets and services specified, highly engineered mechanical components used within complex systems where our customers' reliability requirements and the cost of failure or downtime are extremely high.

#### Water Management

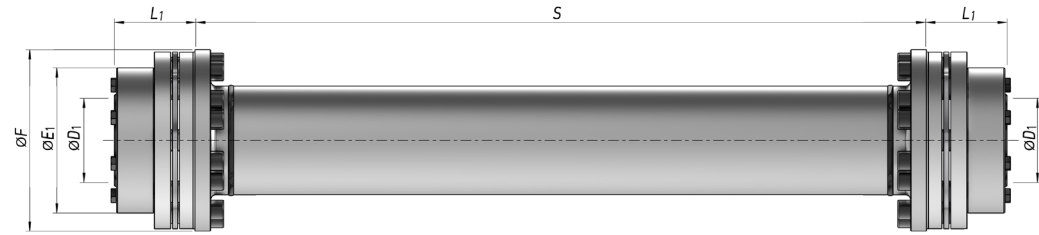
The Rexnord Water Management platform designs, procures, manufactures and markets products that provide and enhance water quality, safety, flow control and conservation.



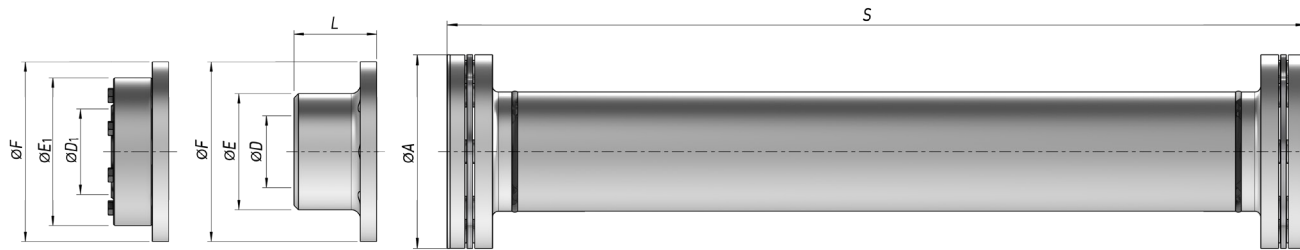
# Modulflex Coupling Series 9xxx

## Design options

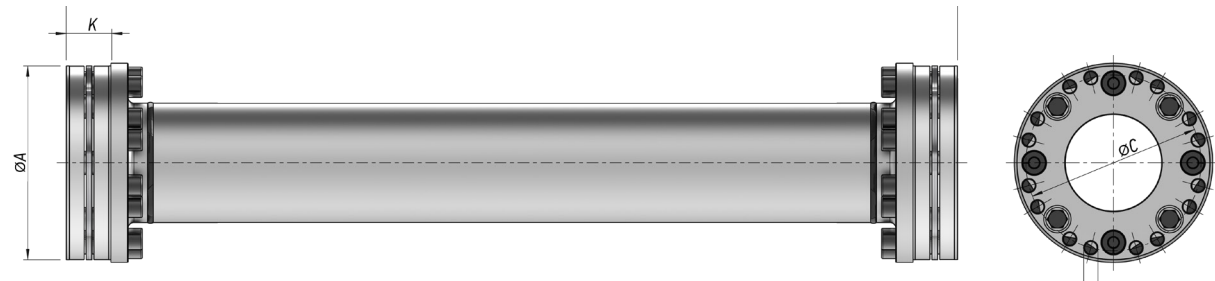
Preferred design for shaft connection with Koniclamp clamping hubs



Design option for shaft-shaft connection



Design option for flange-flange connection



### Applications

- Main and auxiliary drives
- Thruster Drives
- Compressors
- Dredgers & Drillers

### Features

- Compensation of axial and radial shaft misalignment
- Suitable for large distances
- Integrated clamping hub

### Benefits

- High alignment capacity
- High speeds
- Easy Installation
- Reliable performance



## Technical Data

Size	Nominal Torque Engine (1)	Max. Torque $T_{Kmax}$ Nm	Misalignment			Torsional Spring Rate $\times 10^6$ (2) $C_{Tdyn}$ Nm/rad	Max. Speed (3) $n_{max}$ min <sup>-1</sup>
	$T_{KN}$ Nm		axial (2) $\Delta K_{amax}$ mm	radial $\Delta K_{rmax}$ mm	angular (2) $\Delta K_{wmax}$ °		
64	4 800	8 600	2,1	-	0,5	4,63	15 600
110	8 000	15 000	2,5	-	0,5	6,52	14 500
170	12 000	22 000	2,9	-	0,5	11,91	12 800
280	20 000	36 000	3,2	-	0,5	17,18	11 300
450	32 000	58 000	3,6	-	0,5	29,09	10 100
640	48 000	86 000	4,1	-	0,5	39,48	8 100
1100	80 000	150 000	4,6	-	0,5	59,24	7 700
1700	120 000	220 000	4,8	-	0,5	47,61	6 900
2800	200 000	360 000	5,0	-	0,5	121,91	5 500

Size	Modulflex Coupling			Dimensions in mm					Clamping Hub			Spacer
	$A_{j6}$	C	M	K	D	E	F	L	D1 (min-max)	E1 (min-max)	L1 (min-max)	S min
64	222	200	M16	50	120	162	227	120	75-120	173-238	85-98,5	153
110	248	224	M16	58	135	188	252	140	90-135	222-267	99-112	156
170	285	258	M20	65,5	160	210	293	160	105-155	248-308	117-138	193
280	325	295	M24	76,5	180	250	334	180	105-155	285-355	143-166	203
450	366	330	M27	90	200	268	375	200	135-195	325-418	161-212	234
640	408	369	M30	101,5	240	308	416	240	135-195	366-468	183-242	239
1100	465	420	M33	126	270	358	475	270	155-225	412-545	211-266	253
1700	560	490	M36	153	300	395	572	300	155-225	465-580	245-350	262
2800	670	590	M42	185	350	420	686	360	225-295	508-690	260-410	301

(1) As specified by approval authorities (3.2 EN 10204)  
 (2) Axial and angular misalignments as well as torsional spring rates refer to one flexible element  
 (3) High speeds may require special balancing

Data for orientation only and subject to change without notice.  
 Larger bore diameters on demand.  
 Please contact us for your concrete application.