

Link-Belt Series 300



OUR INNOVATION MOVES

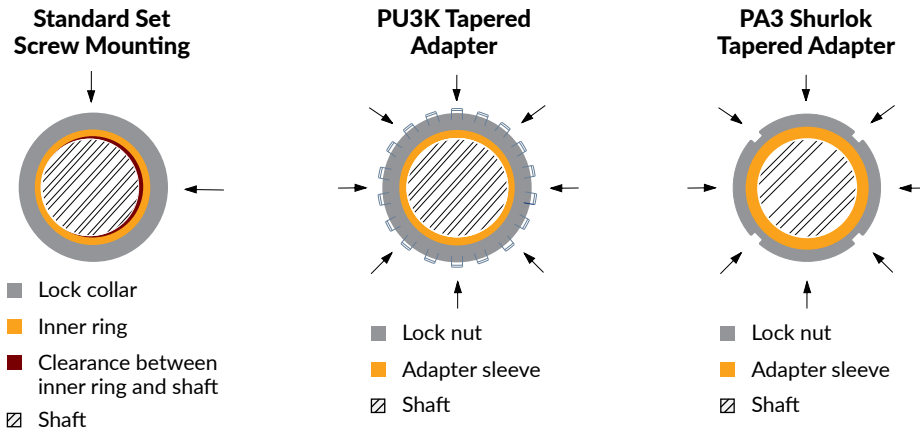
ADAPTER MOUNTED HEAVY-DUTY BALL BEARING

ADAPTER MOUNTING FOR MAXIMUM HOLDING POWER AND CONCENTRIC SHAFT FIT

Easy to mount tapered adapters provide maximum clamping force using commercial shafting tolerances. They automatically center the shaft for concentric fit, which maximizes shaft-bearing balance and extends bearing life.

Anti-rotation pin prevents ring rotation on unbalanced loads

All housings are precision machined for controlled misalignment torque.



Features

- High Capacity
- High Speed
- Minimum Vibration
- Expansion Units

Series 300 PU3K00 and PA300

- Cast Iron Housing
- Standard Backing Height
- Fixed or Expansion
- Alignable
- Relubricatable

LOAD HANDLING AND SPEED, FOR POWERFUL SAVINGS

Don't sacrifice bearing speed for load carrying capacity. The 300 Series gives you 30% more bearing load capacity per shaft size than medium-duty ball bearings – while running faster than roller bearings. You get a bearing tough enough for your fan while saving on upfront cost.

IMPERVRON SEALS

Made for demanding high-speed applications

Bonded elastomeric clearance seal is held securely by snap ring which prevents blowout during lubrication. Tough, stainless-steel guard protects seal and rotates with the shaft, acting as a flinger of debris from the seal area.

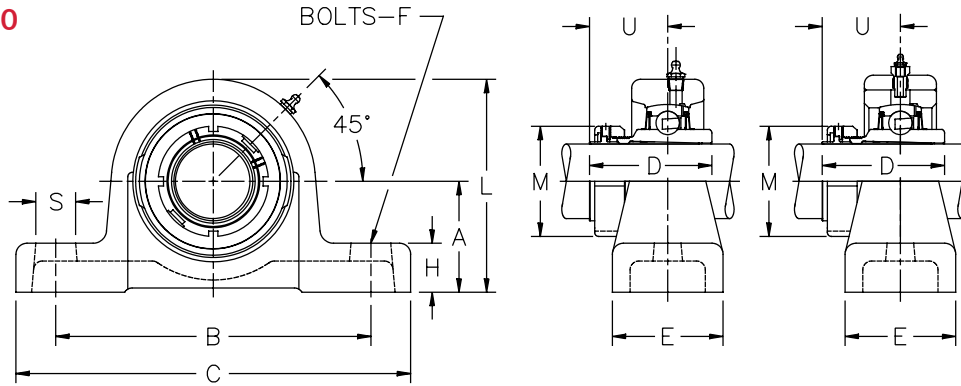
SUPER-FINISHED

Bearing races

The Series 300 deep-groove ball bearing's super-finished races are designed to improve surface lubrication and provide longer service life with exceptionally quiet operation.



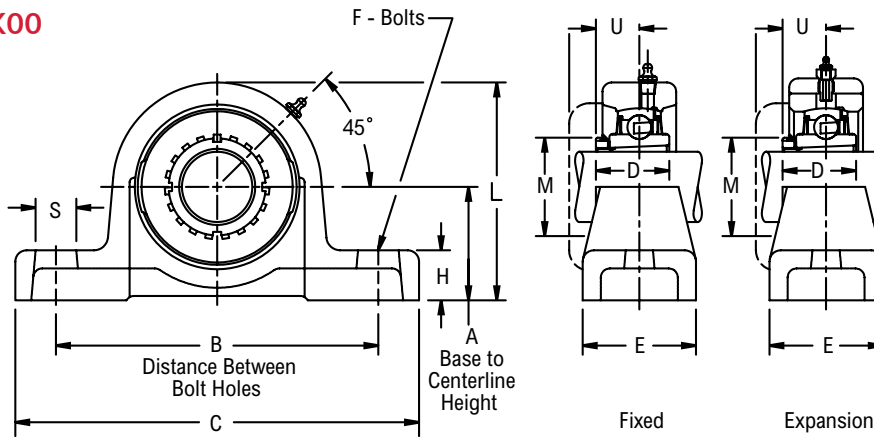
SERIES 300 PA300



Series 300 P-A300 – Dimensions (inches)

Size Code	Shaft Dia.	Expansion		Fixed		A Base to Centerline Height	B Distance Between Bolt Holes	C	D	E	F Bolts	H	M	S	U	Total Axial Expansion	Approx. Weight
		Part Number	L	Part Number	L												
319	1 3/16	PEA319	4 1/4	PA319	4 1/16	2 1/8	6 7/16	8 1/4	2 3/4	2 1/4	1 1/2	15/16	2 5/32	1 1/16	1.98	3/16	5.50
323	1 7/16	PEA323	4 11/16	PA323	4 1/2	2 3/8	7 3/8	9 1/4	2 47/64	2 3/8	5/8	1	2 3/8	1 1/8	1.91	3/16	7.77
328	1 11/16	PEA327	5 5/8	PA327	5 1/2	2 7/8	8 1/4	10 1/4	3 1/8	3	5/8	1 5/16	2 41/64	1 1/8	2.22	3/16	13.35
331	1 15/16	PEA331	6 7/32	PA331	6	3 1/8	8 7/8	11 1/8	3 7/32	3 1/8	5/8	1 3/8	2 55/64	1 1/8	2.13	1/4	16.00
335	2 3/16	PEA335	6 13/16	PA335	6 5/8	3 1/2	10 1/4	12 5/8	3 23/64	3 3/8	3/4	1 1/2	3 15/64	1 1/4	2.14	9/32	24.00
339	2 7/16	PEA339	7 3/16	PA339	7 1/8	3 5/8	11 1/4	13 3/4	3 27/32	3 1/2	3/4	1 5/8	3 19/32	1 3/8	2.39	9/32	27.00
344	2 11/16	PEA343	7 15/16	PA343	7 3/4	4	11 13/16	14 5/8	4 1/4	3 3/4	7/8	1 5/8	4 3/32	1 5/8	2.69	7/32	36.00
	2 3/4	PEA344		PA344													
347	2 15/16	PEA347	8 3/8	PA347	8 3/8	4 1/4	12	15 1/8	4 17/32	4	7/8	1 3/4	4 3/32	1 5/8	2.80	7/32	44.00
351	3 3/16	PEA351	9	PA351	9	4 9/16	12 1/4	15 5/8	5 1/2	4 5/16	7/8	1 15/16	4 61/64	1 5/8	3.69	11/32	55.00
356	3 7/16	PEA355	10 1/16	PA355	9 7/8	5 1/8	12 7/8	16 1/8	5 23/64	5	1	2 1/4	4 61/64	1 5/8	3.33	11/32	68.00
363	3 15/16	PEA363	11 1/16	PA363	11 1/16	5 11/16	14 1/2	17 5/16	5 29/32	5	1	2 9/16	5 43/64	1 1/2	3.97	11/32	98.00

SERIES 300 PU3K00



Series 300 P-U3K00 – Dimensions (inches)

Size Code	Shaft Dia.	Expansion		Fixed		A Base to Centerline Height	B Distance Between Bolt Holes	C	D	E	F Bolts	H	M	S	U	Total Axial Expansion	Approx. Weight
		Part Number	L	Part Number	L												
331	1 11/16	PEU3K27	6 7/32	PU3K27	6	3 1/8	8 7/8	11 1/8	2 17/32	3 1/8	5/8	1 3/8	2 11/16	1 1/8	1 35/64	1/4	17.00
335	1 15/16	PEU3K31	6 13/16	PU3K31	6 5/8	3 1/2	10 1/4	12 5/8	2 19/32	3 3/8	3/4	1 1/2	2 31/32	1 1/4	1 43/64	9/32	23.00
344	2 3/16	PEU3K35	7 15/16	PU3K35	7 3/4	4	11 13/16	14 5/8	3 1/32	3 3/4	7/8	1 5/8	3 3/8	1 5/8	1 27/32	7/32	35.00
347	2 7/16	PEU3K39	8 3/8	PU3K39	8 3/8	4 1/4	12	15 1/8	3 3/16	4	7/8	1 3/4	3 7/8	1 5/8	1 15/16	7/32	41.00
351	2 11/16	PEU3K43	9	PU3K43	9	4 9/16	12 1/4	15 5/8	3 5/16	4 5/16	7/8	1 15/16	4 3/32	1 5/8	2 1/4	11/32	50.00
356	2 15/16	PEU3K47	10 1/16	PU3K47	9 7/8	5 1/8	12 7/8	16 1/8	3 17/32	5	1	2 1/4	4 13/32	1 5/8	2 3/8	11/32	60.00
363	3 7/16	PEU3K55	11 1/16	PU3K55	11 1/16	5 11/16	14 1/2	17 5/16	3 31/32	5	1	2 9/16	5 3/16	1 1/2	2 29/32	11/32	82.00