

Rexnord Duralon Mounted Bearings



Industries Served

- Agriculture
- Air Handling
- Construction Machinery
- Food and Beverage
- Oil & Gas
- Recreational Vehicles
- Water Treatment



Where do Rexnord's Mounted Duralon Bearings Excel?

Oscillating, Pivoting, Sliding and Slow Rotating Applications

Grease lubricated bearings often seize and fail in oscillating, pivoting and slow rotating applications due to breakdown of lubricating film caused by stagnation over long periods of time. This leads to metal-on-metal contact between the inner and outer races. Rexnord's Duralon® Bearings are ideal for these types of applications due to their non-metallic construction and self lubricating properties that eliminate the need for grease.

Corrosive Environments

Grease lubricated bearings often fail in corrosive environments due to component rust and the break down of the lubricating properties of grease. Rexnord's non-metallic Duralon bearings excel in these applications due to their non-oxidizing material and self lubricating properties that eliminate the potential for lubrication breakdown. In addition, because Duralon bearings never rust they are easily removed from shafts, unlike standard bearings that often need to be cut from shafts due to fretting corrosion when being replaced. Rexnord's Duralon bearings are also electrically insulating.

Strength

Rexnord's Duralon bearings have the ability to withstand significantly greater pressures than standard UHMW bearings and do not breakdown and cause metal to metal contact like a lubricated bronze bearing. Duralon bearings can withstand as much as 6 times more projected bearing pressure than a standard UHMW bearing.

Custom Configurations

Rexnord's Duralon bearings can be custom made to fit your unique application. Square, rectangular D-shaped and hex are just a few of the custom shapes Rexnord's Duralon bearing inserts can accommodate, and Rexnord can package them in the housing you need for your application. Rexnord's Application Engineers will work with you to configure a solution that meets your needs.

Applications:

- Pivoting Arms of Cranes
- Walking Beams
- Aeration Equipment in Water Treatment
- HVAC Ventilation Equipment

Environments:

- Heavy Chemical Washdown Environments
- Saltwater and Chlorinated Water
- Highly Acidic Environments
- Heavy Fertilizers

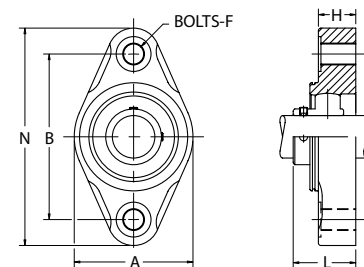
Applications:

- Retractable Stadium Roofs
- Palletizer Conveyors
- Construction Equipment

Custom Applications:

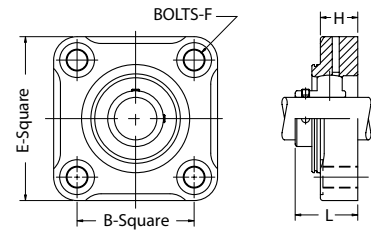
- Bottling Machinery
- Ship Unloading Equipment
- Exercise Equipment

2-Bolt Flange Mounting



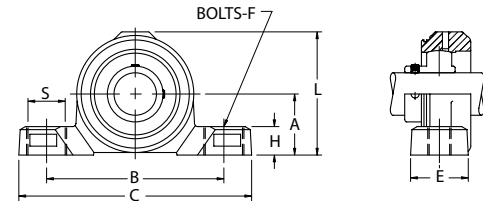
Part Number	Shaft Diameter	A	B	F — Bolts	H	L — Shaft Protector Length	N
DKLFXM012SP	3/4	2 7/16	3.543	3/8	5 1/64	1.44	4 9/16
DKLFXM013SP	13/16	2 13/16	3.898		7/8	1.5	5 1/8
DKLFXM014SP	7/8	2 13/16	3.898		7/8	1.5	5 1/8
DKLFXM015SP	15/16	2 13/16	3.898		7/8	1.5	5 1/8
DKLFXM016SP	1	2 13/16	3.898		7/8	1.5	5 1/8
DKLFXM017SP	1 1/16	3 11/32	4.606		1 1/64	1.82	5 53/64
DKLFXM018SP	1 1/8	3 11/32	4.606		1 1/64	1.82	5 53/64
DKLFXM019SP	1 3/16	3 11/32	4.606		1 1/64	1.82	5 53/64
DKLFXME020SP	1 1/4	3 11/32	4.606		1 1/64	1.82	5 53/64
DKLFXM020SP	1 1/4	3 21/32	5.118		1 1/64	1.96	6 3/8
DKLFXM021SP	1 5/16	3 21/32	5.118		1 1/64	1.96	6 3/8
DKLFXM022SP	1 3/8	3 21/32	5.118		1 1/64	1.96	6 3/8
DKLFXM023SP	1 7/16	3 21/32	5.118		1 1/64	1.96	6 3/8
DKLFXM024SP	1 1/2	4 1/64	5.672		1 3/16	2.03	6 59/64

4-Bolt Flange Mounting



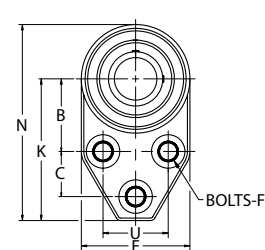
Part Number	Shaft Diameter	B	E	F — Bolts	H	L — Shaft Protector Length
DKLFM013SP	13/16	2.756	3 55/64	3/8	7/8	1.5
DKLFM014SP	7/8	2.756	3 55/64		7/8	1.5
DKLFM015SP	15/16	2.756	3 55/64		7/8	1.5
DKLFM016SP	1	2.756	3 55/64		7/8	1.5
DKLFM017SP	1 1/16	3.268	4 21/64		1 1/64	1.82
DKLFM018SP	1 1/8	3.268	4 21/64		1 1/64	1.82
DKLFM019SP	1 3/16	3.268	4 21/64		1 1/64	1.82
DKLFME020SP	1 1/4S	3.268	4 21/64		1 1/64	1.82
DKLFM020SP	1 1/4	3.622	4 23/32		1 1/64	1.96
DKLFM021SP	1 5/16	3.622	4 23/32		1 1/64	1.96
DKLFM022SP	1 3/8	3.622	4 23/32		1 1/64	1.96
DKLFM023SP	1 7/16	3.622	4 23/32		1 1/64	1.96
DKLFM024SP	1 1/2	4.016	5 5/32		1 3/16	2.03

Pillow Block



Part Number	Shaft Diameter	A	B	C	E	F — Bolts	H	J	L	L — Shaft Protector Length	S
DKLPM012SP	3/4	1 5/16	3 25/32	5 1/32	1 3/16	3/8	43/64	3/4	3 1/32	1.44	7/8
DKLPM013SP	13/16	1 7/16	4 11/16	5 31/64	1 23/64		43/64	13/16	3 11/32	1.5	7/8
DKLPM014SP	7/8	1 7/16	4 11/16	5 31/64	1 23/64		43/64	13/16	3 11/32	1.5	7/8
DKLPM015SP	15/16	1 7/16	4 11/16	5 31/64	1 23/64		43/64	13/16	3 11/32	1.5	7/8
DKLPM016SP	1	1 7/16	4 11/16	5 31/64	1 23/64		43/64	13/16	3 11/32	1.5	7/8
DKLPM017SP	1 1/16	1 11/16	4 49/64	6 27/64	1 27/64		25/32	61/64	3 55/64	1.82	15/16
DKLPM018SP	1 1/8	1 11/16	4 49/64	6 27/64	1 27/64		25/32	61/64	3 55/64	1.82	15/16
DKLPM019SP	1 3/16	1 11/16	4 49/64	6 27/64	1 27/64		25/32	61/64	3 55/64	1.82	15/16
DKLPME020SP	1 1/4S	1 11/16	4 49/64	6 27/64	1 27/64		25/32	61/64	3 55/64	1.82	15/16
DKLPM020SP	1 1/4	1 7/8	4 31/32	6 37/64	1 33/64		25/32	1 7/16	4 1/4	1.96	15/16
DKLPM021SP	1 5/16	1 7/8	4 31/32	6 37/64	1 33/64		25/32	1 7/16	4 1/4	1.96	15/16
DKLPM022SP	1 3/8	1 7/8	4 31/32	6 37/64	1 33/64		25/32	1 7/16	4 1/4	1.96	15/16
DKLPM023SP	1 7/16	1 7/8	4 31/32	6 37/64	1 33/64		25/32	1 7/16	4 1/4	1.96	15/16
DKLPM024SP	1 1/2	2	5 11/32	7 9/32	1 33/64		25/32	1 13/64	4 13/32	2.03	15/16

3 Bolt Flange Bracket



Part Number	Shaft Diameter	B	C	D	E	F — Bolts	K	L — Shaft Protector Length	N	U
DKLFBM013SP	13/16	1 13/16	1 1/8	1 11/64	2 23/32	3/8	3 17/32	1.5	4 57/64	1 5/8
DKLFBM014SP	7/8	1 13/16	1 1/8	1 11/64	2 23/32		3 17/32	1.5	4 57/64	1 5/8
DKLFBM015SP	15/16	1 13/16	1 1/8	1 11/64	2 23/32		3 17/32	1.5	4 57/64	1 5/8
DKLFBM016SP	1	1 13/16	1 1/8	1 11/64	2 23/32		3 17/32	1.5	4 57/64	1 5/8
DKLFBM017SP	1 1/16	2 1/16	1 1/4	1 11/32	3 13/64		3 55/64	1.82	5 15/32	1 7/8
DKLFBM018SP	1 1/8	2 1/16	1 1/4	1 11/32	3 13/64		3 55/64	1.82	5 15/32	1 7/8
DKLFBM019SP	1 3/16	2 1/16	1 1/4	1 11/32	3 13/64		3 55/64	1.82	5 15/32	1 7/8
DKLFBME020SP	1 1/4S	2 1/16	1 1/4	1 11/32	3 13/64		3 55/64	1.82	5 15/32	1 7/8
DKLFBM020SP	1 1/4	2 3/8	1 1/4	1 9/16	3 11/16	7/16	4 15/64	1.96	6 5/64	2
DKLFBM021SP	1 5/16	2 3/8	1 1/4	1 9/16	3 11/16		4 15/64	1.96	6 5/64	2
DKLFBM022SP	1 3/8	2 3/8	1 1/4	1 9/16	3 11/16		4 15/64	1.96	6 5/64	2
DKLFBM023SP	1 7/16	2 3/8	1 1/4	1 9/16	3 11/16		4 15/64	1.96	6 5/64	2



866-REXNORD/866-739-6673 (Within the U.S.)
+39 0532 816911 (Outside the U.S.)
www.rexnord.com

Why Choose Rexnord?

When it comes to providing highly engineered products that improve productivity and efficiency for industrial applications worldwide, Rexnord is the most reliable in the industry. Commitment to customer satisfaction and superior value extend across every business function.

Delivering Lowest Total Cost of Ownership

The highest quality products are designed to help prevent equipment downtime and increase productivity and dependable operation.

Valuable Expertise

An extensive product offering is accompanied by global sales specialists, customer service and maintenance support teams, available anytime.

Solutions to Enhance Ease of Doing Business

Commitment to operational excellence ensures the right products at the right place at the right time.