

Link-Belt®

Link-Belt®

New Series 300

Adapter Mounted
Heavy-Duty
Ball Bearing

- High Capacity
- High Speed
- Minimum
Vibration
- Expansion Units

Rexnord
|||||

Link-Belt® Series 300 Adapter Mounted Heavy-Duty Ball Bearing

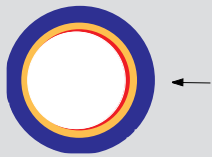
Adapter Mounting for Maximum Holding Power and Concentric Shaft Fit

Easy-to-mount, tapered adapter provides maximum clamping force using commercial shafting tolerances, automatically centering the shaft for concentric fit, which maximizes shaft-bearing balance, and extends bearing life.

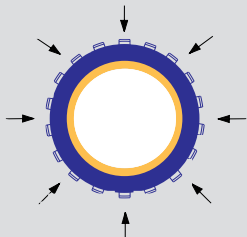
Anti-Rotation Pin Prevents Ring Rotation on Unbalanced Loads

All housings are precision machined for controlled misalignment torque.

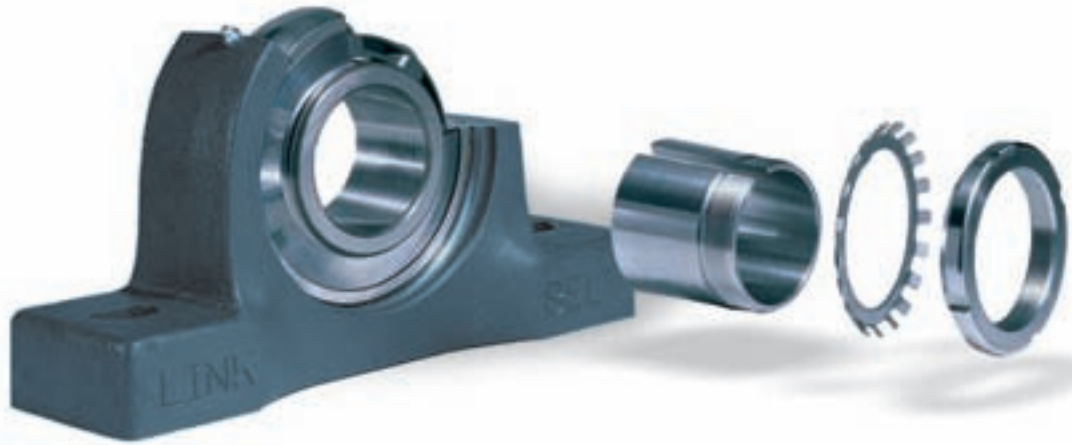
Set screw collar mounting



- Lock collar
- Inner ring
- Clearance between inner ring and shaft
- ☒ Shaft



- Lock nut
- Adapter sleeve
- ☒ Shaft



Impervron Seals

Made for Demanding High-Speed Applications

Bonded elastomeric clearance seal is held securely by snap ring which prevents blowout during lubrication. Tough, stainless-steel guard protects seal and rotates with the shaft, acting as a flinger of debris from the seal area.



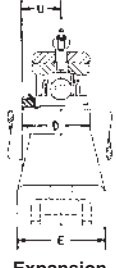
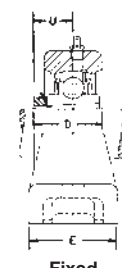
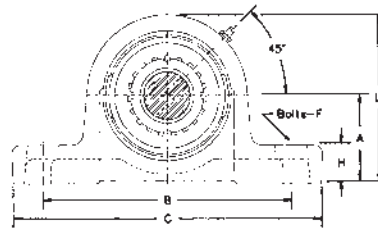
Super-Finished

Bearing Races and Reinforced Nylon Retainers

The Series 300 deep-groove ball bearing's super-finished races and retainers are designed to improve surface lubrication and provide longer service life with exceptionally quiet operation.

Series 300 P-U3K00

Cast Iron Housing
Standard Backing Height
Fixed or Expansion
Alignable
Relubricatable



| Shaft Dia. | Pillow Block Number | A | B | C | D | E | F Bolts | H | L | | U | Axial Exp. | "C" Rating lbs. | Max Speed rpm |
|---------------------------------|---------------------|---------------------------------|----------------------------------|---------------------------------|--------------------------------|--------------------------------|-------------------------------|---------------------------------|---------------------------------|---------------------------------|---------------------------------|--------------------------------|-----------------|---------------|
| | | | | | | | | | Fix | Exp. | | | | |
| 1 ¹ / ₁₆ | P-U3K27 | 3 ³ / ₈ | 8 ⁷ / ₈ | 11 ¹ / ₈ | 2 ³ / ₈ | 3 ¹ / ₈ | 5 ⁸ / ₈ | 1 ³ / ₈ | 6 | 6 ⁷ / ₃₂ | 1 ⁹ / ₁₆ | 3 ¹ / ₁₆ | 13,900 | 7315 |
| 1 ⁵ / ₁₆ | P-U3K31 | 3 ¹ / ₂ | 10 ¹ / ₄ | 12 ⁵ / ₈ | 2 ¹ / ₂ | 3 ³ / ₈ | 3 ⁴ / ₄ | 1 ¹ / ₂ | 6 ⁵ / ₈ | 6 ¹³ / ₁₆ | 1 ⁹ / ₁₆ | 3 ¹ / ₁₆ | 16,070 | 6480 |
| 2 ³ / ₁₆ | P-U3K35 | 4 | 11 ¹³ / ₁₆ | 14 ⁵ / ₈ | 2 ³ / ₄ | 3 ³ / ₄ | 7 ⁸ / ₈ | 1 ⁵ / ₈ | 7 ³ / ₄ | 7 ¹⁵ / ₁₆ | 1 ¹³ / ₁₆ | 1 ⁴ / ₄ | 23,420 | 5155 |
| 2 ⁷ / ₁₆ | P-U3K39 | 4 ¹ / ₄ | 12 | 15 ¹ / ₈ | 3 ¹ / ₁₆ | 4 | 7 ⁸ / ₈ | 1 ³ / ₄ | 8 ³ / ₈ | 8 ³ / ₈ | 1 ¹⁵ / ₁₆ | 1 ⁴ / ₄ | 25,510 | 4825 |
| 2 ¹ / ₁₆ | P-U3K43 | 4 ⁹ / ₁₆ | 12 ¹ / ₄ | 15 ⁵ / ₈ | 3 ¹ / ₄ | 4 ⁵ / ₁₆ | 7 ⁸ / ₈ | 1 ¹⁵ / ₁₆ | 9 | 9 | 2 | 3 ⁸ / ₈ | 27,650 | 4450 |
| 2 ¹⁵ / ₁₆ | P-U3K47 | 5 ¹ / ₈ | 12 ⁷ / ₈ | 16 ¹ / ₈ | 3 ⁵ / ₁₆ | 5 | 1 | 2 ¹ / ₄ | 9 ⁷ / ₈ | 10 ¹ / ₁₆ | 2 ¹ / ₈ | 3 ⁸ / ₈ | 32,080 | 4050 |
| 3 ⁷ / ₁₆ | P-U3K55 | 5 ¹¹ / ₁₆ | 14 ¹ / ₂ | 17 ⁵ / ₁₆ | 4 | 5 | 1 | 2 ⁹ / ₁₆ | 11 ¹ / ₁₆ | 11 ¹ / ₁₆ | 2 ⁷ / ₁₆ | 3 ⁸ / ₈ | 38,910 | 3600 |

Also available in Flange and Take Up Housings. See catalog 3000 or Series 300 brochure, bulletin no. 3014 for detailed housing dimensions.



Rexnord Corporation
Link-Belt Bearing Division
7601 Rockville Road
Indianapolis, Indiana 46214
Bulletin No. 3034

PH: 317/273-5500
FAX: 317/273-5620
www.rexnord.com

© 1997 Rexnord Corporation

4/98 C.I. 2.5M Printed in USA