

Rexnord® TableTop® and MatTop® Chains



Rexnord 6990 Series MatTop® Chain

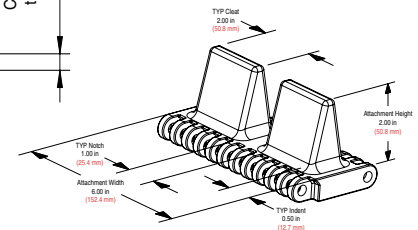
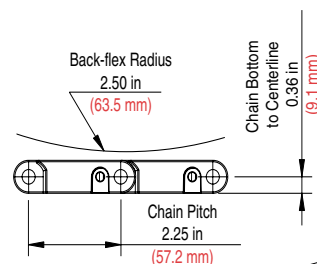
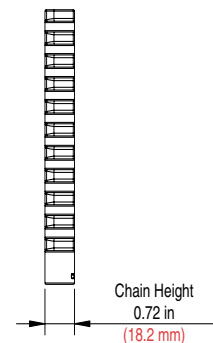
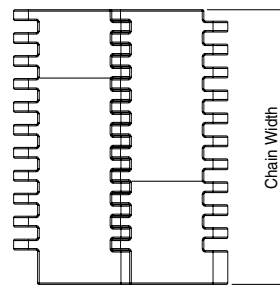
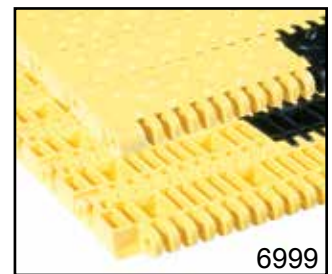
Rexnord® 6990 Series MatTop® Chain for Car Care changes the way vehicles and people are conveyed in exterior wash and interior detailing car care operations. The heavy-duty (2.25 inch/ 57.2mm) modular plastic 6995 Solid Top MatTop Chain for exterior car washing, and the 6999 Safety Top MatTop Chain for interior detailing provide smooth, safe and simple conveying of vehicles and people without the maintenance, bumping and jerking, and safety concerns of traditional steel chain conveyors

Smooth operation

With Rexnord's 6995 Solid Top MatTop® Chain and unique chain -sprocket interaction, vehicles ride smoothly on the gently moving flat conveying floor. Requiring no guiderails or correlators, the 30 inch or 42 inch dual lane conveying chains can move virtually any size or style vehicle with no damage to wheels, rims or finish. Rugged, built-in T1 and T2 vehicles pushers carry cars onto, through and off the conveyor while in neutral or park, so loading and unloading are quick and easy

Features & Benefits

- Solid link construction
- Very high strength and stiffness due to the unique hinge and pin design
- 5000 lbs/ft (70,000N/m) working load
- Superior sprocket and chain interaction ensuring smooth operations and long chain life
- Quick installation and easy maintenance
- High strength sprockets available in multiple bore sizes and styles
- Split sprockets that can be assembled and disassembled without shaft removal
- Robust 2.25 in (18 mm) thick links enabling the chain to convey large and heavy loads
- Completely closed surface (Solid Top and Safety Top) eliminating small parts from getting stuck in the chain and improving employee safety
- The Safety Top surface provides additional grip on the chain surface in wet or humid environments
- Rexnord TwistLock® pin retention systems provide easy installation and maintenance features
- Chain is available with T1 and T2 vehicle pushers for loading, conveying, and unloading product
- Available in wear resistant acetal, ultraviolet resistant, low temperature, high temperature and multi-colored materials



Rexnord, TableTop, MatTop, and TwistLock are registered trademarks of Rexnord Industries, LLC. All rights reserved.

866-REXNORD/866-739-6673 (Within the U.S.) 414-643-2366 (Outside the U.S.) • www.rexnord.com

Rexnord FlatTop Europe b.v. flattopeurope@rexnord.com www.rexnordflattop.com
 Rexnord FlatTop North America 1272 Dakota Drive Grafton, WI www.rexnord.com
 ©2008 Rexnord Industries, LLC

8rx6990CARCAREss-en 04/08 Delzer Litho Printed in USA