

To convert standard horizontal Type G10, 20, 51, & 52 couplings to vertical Type GV couplings (see Figures 1 & 2), remachine parts as instructed below. Do not use these couplings for thrust applications; consult Factory for recommendations.

Assemble GV10 & GV20 couplings per Manual 458-110. Use Dimension BE shown in the manual. Both hubs of couplings are cut off and counterbored so that either may be used as the lower hub. Use the Centering Components Kit in all GV10 & 20 couplings to center the sleeve assembly.

Assemble GV51 & 52 couplings per Manual 458-310. Use Dimension BE shown in the manual. For vertical floating shaft applications, use the GV51 or 52 coupling (with the centering components kit) as the bottom coupling and a standard G51 or 52 as the top coupling.

Machine Parts as Follows:

SLEEVES, ALL TYPES:(Refer to Figure 3)

Size 1010G20 only: Counterbore for Centering Plate.

Sizes 1010, 1015 & 1020G10 & 51 only: Spot face for lube channel.

All other sleeves are currently provided with counterbore for centering plate. Machine only if counterbore is not in sleeve to the dimensions in Table 1.

HUBS, G10 & G20: (Refer to Figure 4)

Cut off and counterbore gap face end.

HUBS, G51 & 52: (Refer to Figure 4)

Flex Hub: Cut off and counterbore gap face end.

Rigid Hub: Use as received.

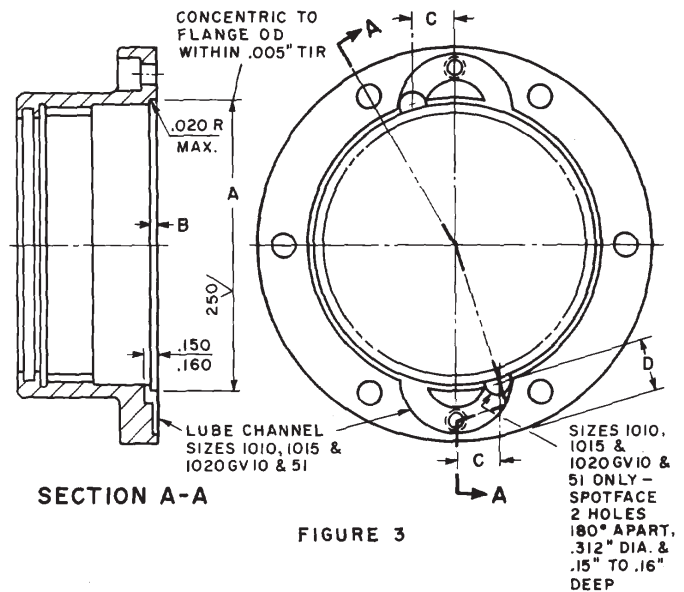
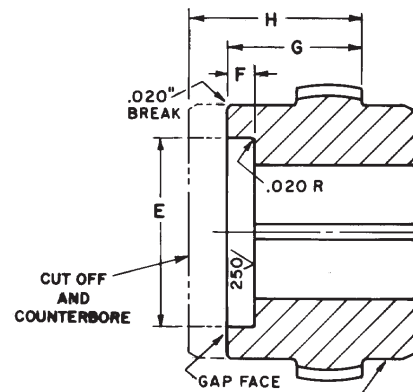


FIGURE 3



SEALING SURFACE; DO NOT DAMAGE. PROTECT WITH BRASS SHIM STOCK OR USE CHUCK WITH SOFT JAWS.

FIGURE 4

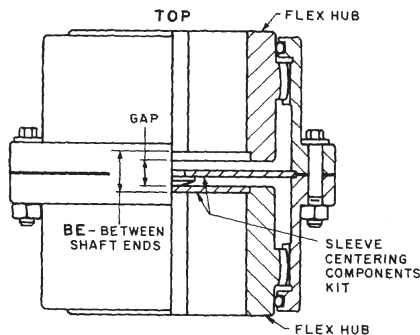


FIGURE 1

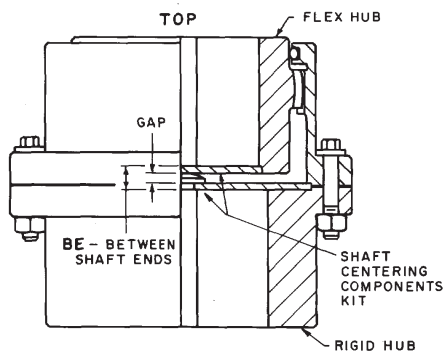


FIGURE 2

TABLE 1 — Dimensions-Inches

| SIZE | A ".01 | B ".01 ! .00 | C | D | E Min Max | F +.005 ! .000 | G +.00 ! .01 | H |
|--------|-----------|--------------------|-----|-------|---------------|----------------------|--------------------|------|
| 1010GV | 3.18 | .09 | .36 | .691 | 2.120-2.122 | .250 | .95 | 1.10 |
| 1015GV | 3.92 | .09 | .31 | 1.040 | 2.620-2.622 | .250 | 1.28 | 1.44 |
| 1020GV | 4.80 | .09 | .27 | 1.100 | 3.250-3.252 | .250 | 1.58 | 1.74 |
| 1025GV | 5.86 | .09 | ... | ... | 4.000-4.002 | .250 | 1.97 | 2.17 |
| 1030GV | 6.82 | .09 | ... | ... | 4.500-4.502 | .250 | 2.44 | 2.63 |
| 1035GV | 7.86 | .09 | ... | ... | 5.380-5.385 | .250 | 2.90 | 3.13 |
| 1040GV | 9.25 | .15 | ... | ... | 6.380-6.385 | .250 | 3.35 | 3.67 |
| 1045GV | 10.25 | .15 | ... | ... | 6.880-6.888 | .375 | 3.72 | 4.07 |
| 1050GV | 11.42 | .19 | ... | ... | 7.500-7.508 | .375 | 4.31 | 4.66 |
| 1055GV | 12.24 | .19 | ... | ... | 8.380-8.388 | .375 | 4.98 | 5.33 |
| 1060GV | 13.92 | .25 | ... | ... | 9.250-9.258 | .375 | 5.33 | 5.74 |
| 1070GV | 15.94 | .32 | ... | ... | 11.000-11.008 | .500 | 6.22 | 6.73 |