

Spring Adjustment Charts For Standard Low Slip Torques

SIZES 1030 thru 1080
SIZES 30 thru 80

STEEFLEX COUPLINGS

428-411

Tapered Grid

SERVICE MANUAL

PAGE

Types T41-2 & T44-2

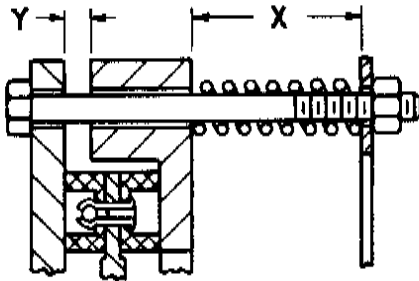
July 1986

1

Subject to change without notice

Supersedes 4-79

DIMENSIONS X and Y



INSTRUCTIONS

The following instructions for Sizes 1030 thru 1080 also apply to Sizes 30 thru 80, respectively. Refer to Service Manual 428-410 for complete installation instructions of Type T41-2 couplings and Manuals 428-410 & 428-410.1 for Type T44-2 clutches. Refer to the O.D. of the hub or drive plate for the coupling size. Prepare the controlled torque assembly for operation as follows:

1. Set Distance X for all springs to the value indicated by the triangle (▲) in the applicable chart.
2. Break in the friction segments as instructed in Manual 428-410.
3. Determine Distance X for the required slip torque.
4. Tighten each adjusting nut approximately two turns in sequence until Distance X is reached.
5. Do NOT set Distance X to less than the minimum value indicated by the diamond (◆).

IMPORTANT

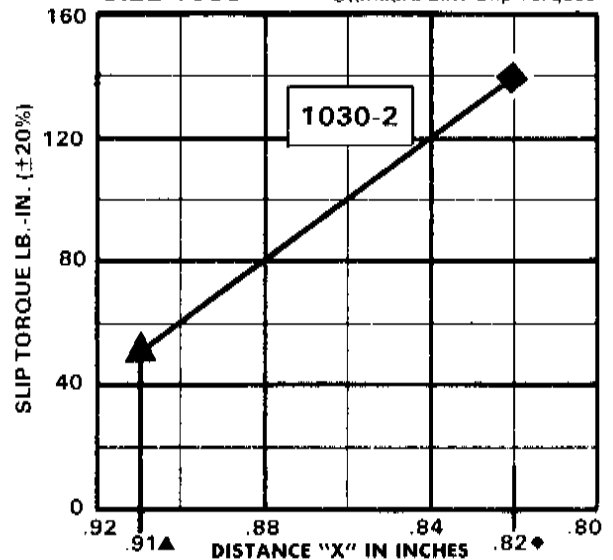
Overload slippage causes friction faces to wear and increases Distance X. Readjust, as required, to the original Distance X to maintain the required slip torque. Replace friction segments when Distance Y approaches .050 inches.

SPRING DATA

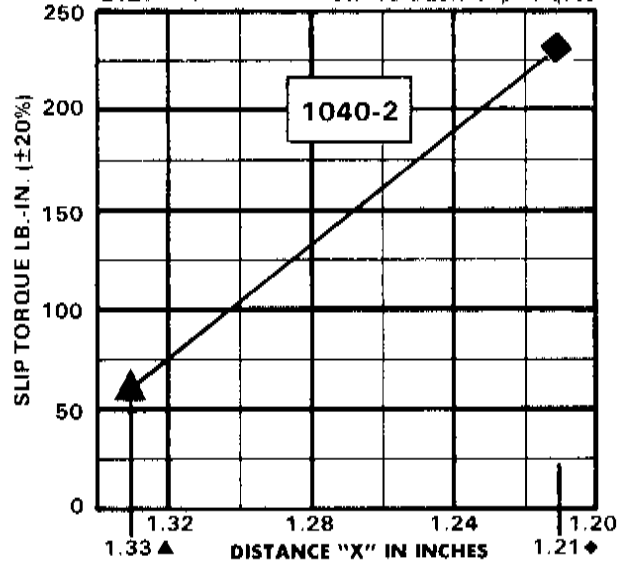
| COUPLING SIZE | Number of Springs | Part No. | DIMENSIONS-INCHES | | |
|---------------|-------------------|----------|-------------------|--------------|-------------|
| | | | Wire Dia. | Outside Dia. | Free Height |
| 1030 | 4 | 1178284 | .072 | .44 | .96 |
| 1040 | 4 | 1178285 | .093 | .55 | 1.38 |
| 1050 | 4 | 1178285 | .093 | .55 | 1.38 |

- ▲ Set Distance X to this value for breaking in of friction segments.
- ◆ Do NOT set Distance X to less than this minimum value.

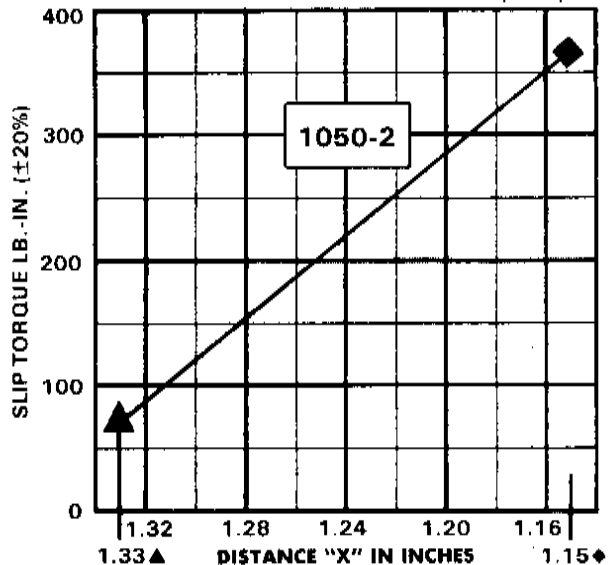
SIZE 1030 Standard Low Slip Torques



SIZE 1040 Standard Low Slip Torques

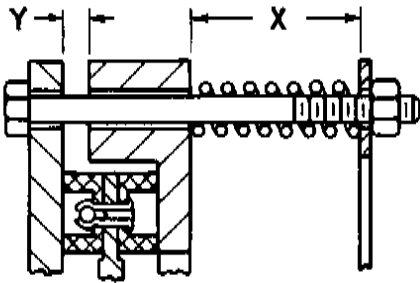


SIZE 1050 Standard Low Slip Torques



SPRING ADJUSTMENT CHARTS FOR STANDARD LOW SLIP TORQUE

DIMENSIONS X and Y



INSTRUCTIONS

The following instructions for Sizes 1030 thru 1080 also apply to Sizes 30 thru 80, respectively. Refer to Service Manual 428-410 for complete installation instructions of Type T41-2 couplings and Manuals 428-410 & 428-410.1 for Type T44-2 clutches. Refer to the O.D. of the hub or drive plate for the coupling size.

IMPORTANT: When installing Sizes 1060 thru 1140 couplings, locate the springs and fasteners in alternate fastener holes in the coupling flange.

Prepare the controlled torque assembly for operation as follows:

1. Set Distance X for all springs to the value indicated by the triangle (▲) in the applicable chart.
2. Break in the friction segments as instructed in Manual 428-410.
3. Determine Distance X for the required slip torque.
4. Tighten each adjusting nut approximately two turns in sequence until Distance X is reached.
5. Do NOT set Distance X to less than the minimum value indicated by the diamond (◆).

IMPORTANT

Overload slippage causes friction faces to wear and increases Distance X. Readjust, as required, to the original Distance X to maintain the required slip torque. Replace friction segments when Distance Y approaches .050 inches.

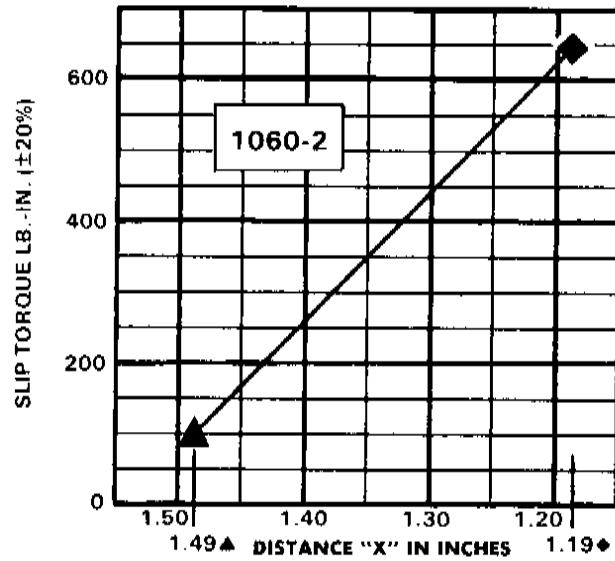
SPRING DATA

| COUPLING SIZE | Number of Springs | Part No. | DIMENSIONS-INCHES | | |
|---------------|-------------------|----------|-------------------|---------------|-------------|
| | | | Wire Diam. | Outside Diam. | Free Height |
| 1060 | 3 | 1178287 | .105 | .58 | 1.55 |
| 1070 | 3 | 1178288 | .124 | .68 | 1.98 |
| 1080 | 3 | 1178289 | .148 | .78 | 1.98 |

- ▲ Set Distance X to this value for breaking in of friction segments.
- ◆ Do NOT set Distance X to less than this minimum value.

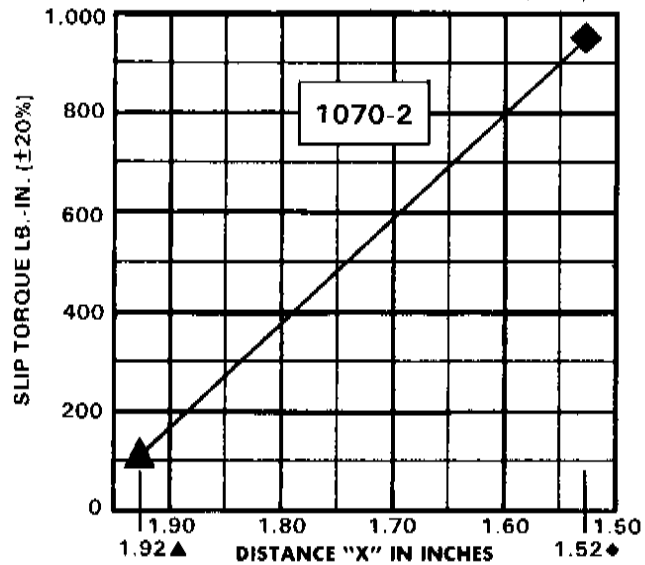
SIZE 1060

Standard Low Slip Torques



SIZE 1070

Standard Low Slip Torques



SIZE 1080

Standard Low Slip Torques

