

## Type T10/G82 Steelflex Coupling Parts

### Part Numbers

1. Seal (710)
2. Cover (710)
3. T Hub (Specify bore and keyway)
4. Grid
5. Gasket (710)
6. Fasteners, Cover (710)
7. Lube Plug
20. Center Shaft (Specify diameter, keyways and length)
21. G82 Rigid Hub (Specify bore and keyway)
22. Fasteners, Flange (682)
23. Centering Plate (682)

WHEN ORDERING SPARE PARTS, SPECIFY COUPLING SIZE AND TYPE AS SHOWN ON COUPLING COVER (TYPE T10) OR COUPLING FLANGE O.D. (TYPE G82).

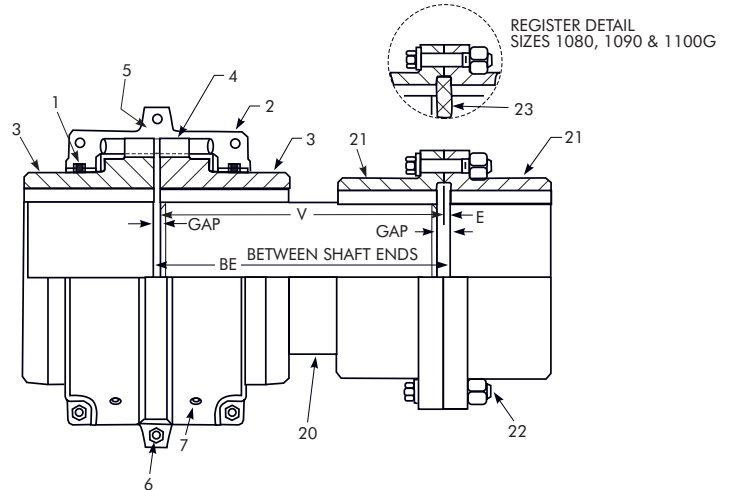
**INTRODUCTION** — This manual applies to Sizes 1110 thru 1200T10/G82 Falk Steelflex Tapered Grid Couplings. This manual is to be used in conjunction with Service Manual 428-110 for Sizes 1110 thru 1140T10/G82 or Service Manual 428-112 for sizes 1150 thru 1200T10/G82. The performance and life of the couplings depend largely upon how you install and service them. Carefully follow the instructions in this manual and the appropriate manual listed above for optimum performance and trouble free service.

**CAUTION:** Consult applicable local and national safety codes for proper guarding of rotating members. Observe all safety rules when installing or servicing couplings.

**WARNING:** Lockout starting switch of prime mover and remove all external loads from drive before installing or servicing couplings.

**WARNING:** Mixing grid coupling components from different manufacturers may cause premature failure and personal or property damage from flying debris.

1. **ASSEMBLE HUBS TO CENTER SHAFT** — If hubs are already assembled to the center shaft, disregard Step 1 and continue with Step 2. — Remove all nicks and burrs from shaft and hubs. Check fit of keys in shaft and hub keyways. Lightly coat seal (1) with grease and place on shaft BEFORE mounting hubs. NOTE: Be certain that seal does not contact hot hub. Heat hubs to a maximum of 275°F (135°C) using an oven, torch, induction heater or an oil bath. To prevent seal damage, DO NOT heat hubs beyond a maximum temperature of 400°F (205°C). DO NOT apply heat directly to the T hub teeth if using a torch. Mount hubs as illustrated above with the T hub face flush with the end of the shaft and the G82 hub counterbore face flush with the end of the shaft.
2. **DETERMINE DISTANCE BETWEEN SHAFT ENDS** — Dimension “BE” — Measure length of center shaft assembly, Dimension “V.” Add Dimension “V” (just determined) plus “T gap” (from Table 1) plus Dimension “E” (from Table 1) to determine Dimension “BE.”
3. **MOUNT HUBS** — Lightly coat T hub seal with grease and place on shaft BEFORE mounting hub. NOTE: Be certain that seal does not contact hot hub. Mount T hub to its respective shaft so that the hub face is flush with the end of its shaft. Mount G82 hub to its respective shaft so that the hub



counterbore face is flush with the end of its shaft. For Sizes 1180 thru 1200T10/G82, insert centering plate (23) into counterbore of G82 hub (21) to register the coupling halves.

4. **INSTALL CENTER SHAFT ASSEMBLY** — Sizes 1110 thru 1170T10/G82 — Install center shaft assembly as shown above using the fasteners supplied by Rexnord. Install and tighten G82 hub flange fasteners, however, do not torque fasteners at this time. Check runout on G82 hub flange O.D. (21) with a dial indicator and true up within .002" TIR (total indicator reading). Torque fasteners to the value listed in Table 1.
5. **Sizes 1180 thru 1200T10/G82** — Install center shaft assembly as shown above using the fasteners supplied by Rexnord. Carefully guide the G82 hub (21) counterbore onto the centering plate (23). Check to make sure that flange faces are seated all the way around the coupling. Install and torque fasteners to the value listed in Table 1.
5. **FINAL ASSEMBLY** — Position equipment to the “BE” dimension determined in Step 2 and the “T gap” listed in Table 1. Proceed with alignment, assembly and lubrication as instructed in the appropriate service manual listed in the introductory paragraph.

**TABLE 1 — Installation Data**

COUPLING SIZE		Gap (Inches)		G82	
T10	G82	T10	G82	Dimension E (In)	Flange Bolt Torque (ft-lb)
1110T	1035G	.188	.200	.100	250
1120T	1040G	.250	.320	.160	250
1130T	1045G	.250	.320	.160	250
1140T	1050G	.250	.400	.200	250
1150T	1055G	.250	.400	.200	250
1160T	1060G	.250	.520	.260	250
1170T	1070G	.250	.660	.330	250
1180T	1080G	.250	.640	.320	740
1190T	1090G	.250	.640	.320	1050
1200T	1100G	.250	.720	.360	1050