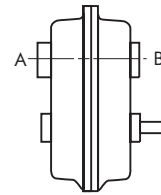


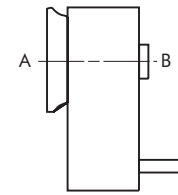
## Maximum Ratings for Pure Thrust at Hollow Shaft

The values published herein are for the most favorable high speed shaft rotation; thrust values in Bulletin 371-110 are for the most unfavorable and apply to either direction of high speed shaft rotation. Interpolate values for intermediate speeds.

When the following values are used, the high speed shaft must rotate in the direction specified for the specific rating. The direction of rotation is determined by facing the end of the high speed shaft. From the same viewing position, the hollow shaft will rotate in the same direction as the high speed shaft for double reduction drives and the opposite direction for single reduction drives.



Sizes 5107 thru 5315



Sizes 5407 thru 4608

### Thrust: A Towards B – Single Reduction (Ratios 4.923 – 5.077)

DRIVE SIZE	H.S. Shaft Rotation	Output Speed RPM			
		90	200	300	350
5107	CCW	2525	1986	1760	1680
5115	CCW	4390	3843	3402	3248
5203	CCW	5459	4292	3797	3627
5207	CCW	7676	6038	5346	5104
5215	CCW	10184	9467	8380	8001
5307	CCW	11910	9366	8288	7912
5315	CCW	11240	8850	7840	7490
5407	CCW	7201	4833	4281	4097
5415	CCW	15763	11471	10153	9692

### Thrust: B Towards A – Single Reduction (Ratios 4.923 – 5.077)

DRIVE SIZE	H.S. Shaft Rotation	Output Speed RPM			
		90	200	300	350
5107	CW	2525	1986	1760	1680
5115	CW	3490	3490	3358	3205
5203	CW	5328	4186	3703	3535
5207	CW	5595	5595	5223	4987
5215	CW	8171	8171	8171	7816
5307	CW	10774	9127	8073	7705
5315	CW	11020	8670	7680	7330
5407	CW	4014	4194	4736	7095
5415	CW	15563	11289	9992	9539

### Thrust: A Towards B – Double Reduction (Ratios 8.908 – 25.81)

DRIVE SIZE	H.S. Shaft Rotation	Output Speed RPM							
		10	25	50	75	100	125	150	175
5107	CW	3590	3590	3011	2667	2446	2288	2166	2067
5115	CW	4390	4390	4390	4390	4390	4390	4159	3971
5203	CW	6680	6680	6494	5739	5260	4918	4653	4442
5207	CW	8120	8120	8120	8064	7394	6912	6543	6246
5215	CW	10184	10184	10184	10184	10184	10184	10184	9802
5307	CW	13160	13160	13160	12398	11373	10627	10061	9596
5315	CW	13220	13220	13220	12030	11040	10350		
5407	CW	18964	12976	9500	7843	6786	6084		
5415	CW	35897	24961	18447	15339	13335	12357		
5507	CW	39497	26726	19253	16813	15619	14618		
5608	CCW	36236	23585	16200	14329				

### Thrust: B Towards A – Double Reduction (Ratios 8.908 – 25.81)

Drive Size	H.S. Shaft Rotation	Output Speed RPM							
		10	25	50	75	100	125	150	175
5107	CCW	3490	3490	3011	2667	2446	2288	2166	2067
5115	CCW	3490	3490	3490	3490	3490	3490	3490	3971
5203	CCW	5595	5595	5595	5595	5104	4771	4510	4442
5207	CCW	5595	5595	5595	5595	5595	5595	5595	6246
5215	CCW	8171	8171	8171	8171	8171	8171	8171	9802
5307	CCW	10774	10774	10774	10774	10774	10228	9682	9596
5315	CCW	15070	15070	13230	11710	10750	10080		
5407	CCW	18850	12865	9390	7736	6680	5981		
5415	CCW	35647	24713	18199	15094	13091	12126		
5507	CCW	39237	26466	18995	16580	15409	14422		
5608	CW	36308	23657	16271	14392				