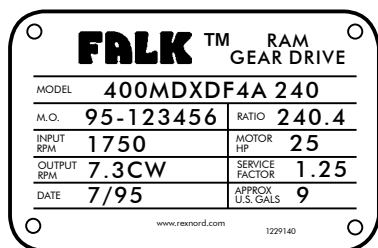


Introduction

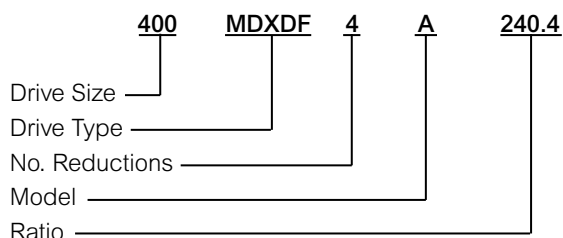
This parts guide is designed to assist in ordering replacement parts for standard Types MDXD, MDXQ, MDXT, and MDXU quadruple reduction (ratios 238.4 thru 1207) RAM mixer drives. Consult the Factory for special or modified drives.

- IDENTIFY DRIVE** — Record drive, model, ratio and M.O. number from nameplate.

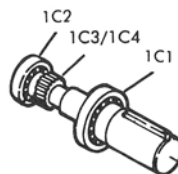
Sample Nameplate



Gear Drive Identification



- IDENTIFY INDIVIDUAL PARTS** — Use exploded view on pages 2 & 3 to determine Ref. No. of required parts.



Ref. No.	Part Description
1C1	Bearing
1C2	Bearing
1C3/1C4	Pinion & Shaft

NOTE: Shaft hardware is included with shafts. Replace seals, shims, and gaskets whenever reassembling a drive.

- HOW TO USE THIS GUIDE** — Use the Part Ref. No. (Step 2) and the drive Model No. (Step 1) to determine the part description and use this information to order the required parts.
- DOES THIS RESTRICTION APPLY?** — Components shown (in non-shaded area in Table 3, page 5, are Factory-assembled using high interference fits and CANNOT be replaced individually. Use drive size and ratio to determine if this restriction applies.
- ORDER REPLACEMENT** — Place your order with your local Rexnord representative or distributor. If you need assistance, call the number below.

Bearing & Seal Identification

Refer to the exploded views on pages 2 and 3 and Tables 1 and 2, page 4, to identify the bearings and oil seals by the parts list Reference Number. Then refer to Tables 4 thru 8, pages 5 and 6, to determine the manufacturer and manufacturer's part number.

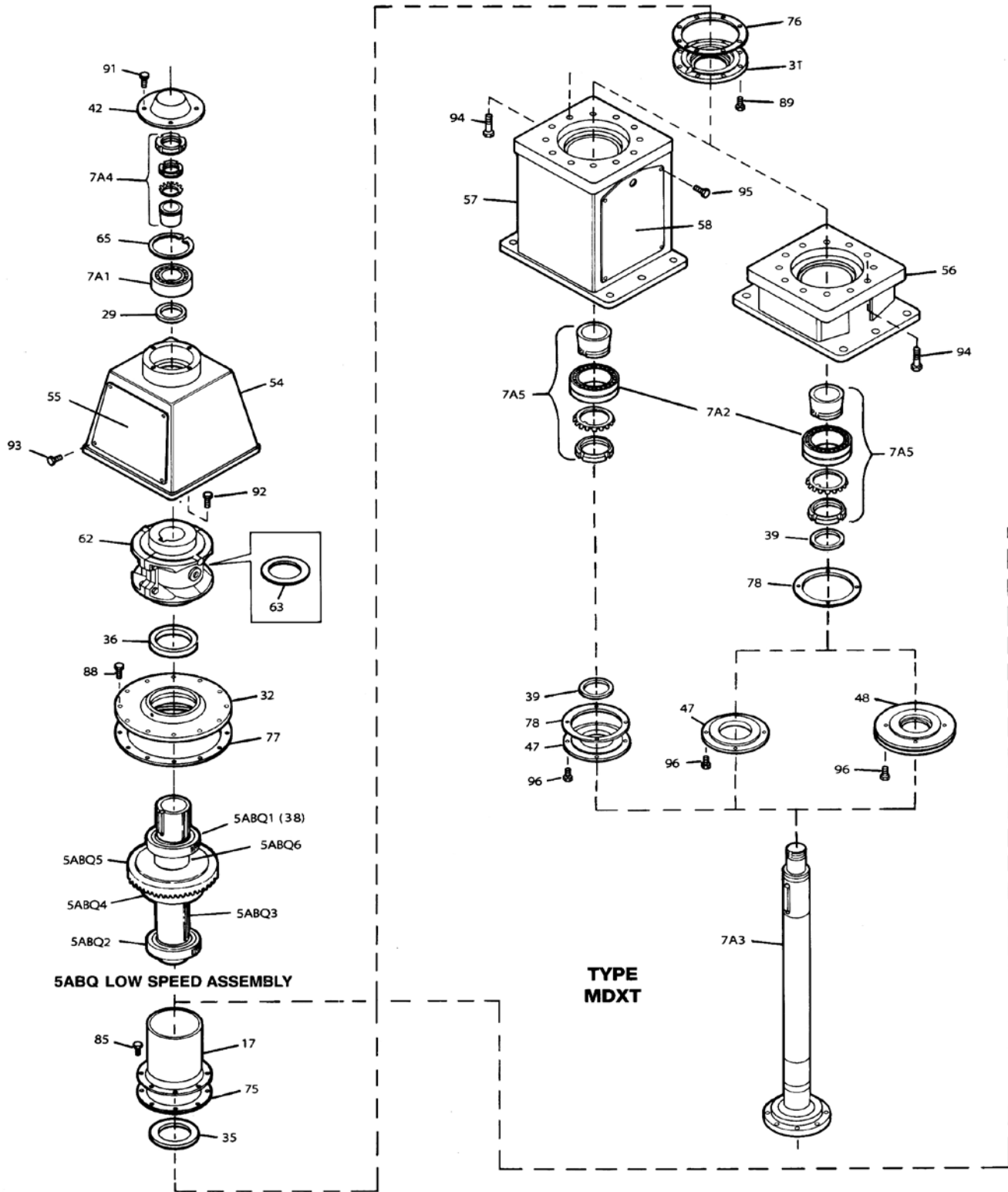
Corrosion Protection & Storage

CAUTION: Follow guidelines below to avoid damage to parts.

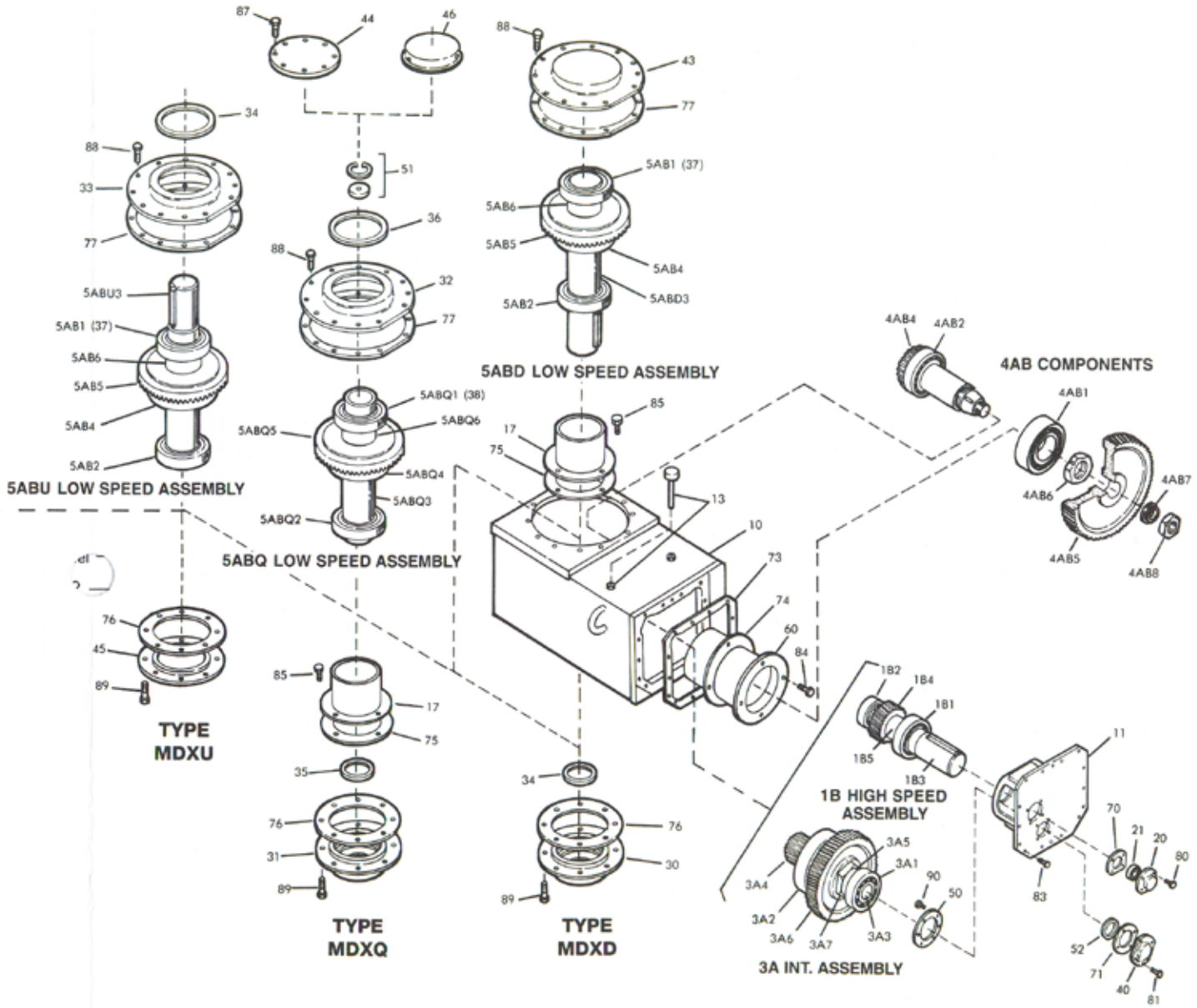
- For domestic or indoor storage, the Factory provides standard 24-month protection as boxed or optional 24-month protection for individual parts.
- For export or outdoor storage, Factory provides optional 18-month protection.

CAUTION: This protection does not cover exposure to elements such as standing water, etc.

Parts Diagram



Refer to page 5 to determine the availability of individual components.



Reference Numbers

TABLE 1 — Housing Parts List

Ref. No.	Parts Description
10	Housing
11	Head
13	Dipstick
17	Oil Dam
20	Seal Cage, Replace with Ref. No. 120
21	Seal
29	Seal, Upper
30	Seal Cage, Lower
31	Seal Cage, Lower
32	Seal Cage, Upper
33	Seal Cage, Upper
34	Seal
35	Seal, Lower
36	Seal, Upper
37	Grease Shield, Nilos
38	Grease Shield, Nilos
39	Seal, Lower
40	Shaft Cover (Replace with Ref. No. 140)
41	Shaft Cover (Replace with Ref. No. 141)
42	End Cover
43	Shaft Cover, Upper
44	Shaft Cover, Upper, Size 400
45	Shaft Cover, Lower
46	Shaft Cover, Upper, Sizes 500–900
47	Seal Cage, Lower
48	Seal Cage, Lower, Optional
50	Thrust Plate, Sizes 700–900
51	Thrust Plate Kit
52	Spacer (Sizes 400–600)
53	Spacer, Sizes 400–700
54	Bearing Cage, Upper (Incls. Qty. 2 Ref. No. 55)
55	Inspection Cover, Bearing Cage
56	Pedestal Base, Low
57	Pedestal Base, High, (Incls. Qty. 2 Ref. No. 58)
58	Inspection Cover, High Pedestal
60	Bearing Cage
62	Coupling
63	Packing Ring, Between Coupling Hubs
65	Retaining Ring
70 thru 78	Shim Gaskets available as a Kit (Specify Ref. No. 100)
80 thru 96	Fasteners available as a Kit. Specify Ref. No. 110 (or 112 which also includes fasteners for the MDXT)
100	Shim-Gasket Kit (Incls. Ref. No. 70 thru 78)
110	Fastener Kit — MDX (Incls. Ref. No. 80 thru 90)
112	Fastener Kit — MDXT (Incls. Ref. No. 80 thru 96)
120	Seal Cage ASSEMBLY (Incls. Ref. No. 20, 21, & 70)
140	Shaft Cover Kit (Incls. Ref. No. 40, 71)
141	Shaft Cover Kit (Incls. Ref. No. 41, 72)

TABLE 2 — Shaft Assemblies Parts List

Ref. No.	Parts Description
1C	Shaft Assembly (Incls. Ref. No. 1C1 thru 1C4)
1C1	Bearing
1C2	Bearing
1C3/1C4	Pinion & Shaft
2A	Shaft Assembly (Incls. Ref. No. 2A1 thru 2A8)
2A1	Bearing
2A2	Bearing
2A4	Pinion & Shaft
2A6	Gear
2A7	Locknut
2A8	Bearing Sleeve, Sizes 600–700
3A	Shaft Assembly (Incls. Ref. No. 3A1 thru 3A7)
3A1	Bearing
3A2	Bearing
3A3	Shaft
3A4	Pinion
3A5	Spacer, Sizes 400–600
3A6	Gear
3A7	Locknut
4AB	Bevel Pinion Shaft Components
4AB1	Bearing
4AB2	Bearing
4AB4	Bevel Pinion (Replace with Ref. 6AB/6ABQ) ★
4AB5	Gear
4AB6	Locknut & Washers
4AB7	Spacer, Sizes 800 & 900
4AB8	Locknut
5ABU/D	Shaft Assembly (Incls. Ref. No. 5AB1 thru 5AB6, except 5AB5)
5AB1	Bearing (Incls. Ref. No. 37)
5AB2	Bearing
5ABU3/D3	Shaft
5AB4	Umbrella
5AB5	Bevel Gear (Replace with 6AB) ★
5AB6	Spacer
6AB	Bevel Gear Set (Incls. Ref. No. 4AB4, 4AB6, 4AB8, 5AB5)
5ABQ	Shaft Assembly (Incls. Ref. No. 5ABQ1 thru 5ABQ6, except 5ABQ5 & 51)
5ABQ1	Bearing (Incls. Ref. No. 38)
5ABQ2	Bearing
5ABQ3	Shaft (Hollow)
5ABQ4	Umbrella
5ABQ5	Bevel Gear (Replace with 6ABQ) ★
5ABQ6	Spacer
6ABQ	Bevel Gear Set (Incls. Ref. No. 4AB4, 4AB6, 4AB8, 5ABQ5)
7A1	Bearing
7A2	Bearing
7A3	Stub Shaft
7A4	Bearing Adapter Removal Sleeve
7A5	Bearing Adapter Sleeve Assembly

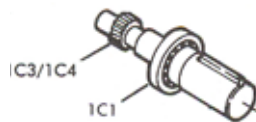
★ Bevel gear and pinion must be ordered in matched sets.

Bearings

FACTORY-ASSEMBLED COMPONENTS — Individual components for drive sizes and ratios shown in the SCREENED areas may be ordered separately. High interference fit components, which must be assembled at the Factory, are identified in Table 3.

TABLE 3 — 1C & 3A Shaft Assemblies

RATIO	Drive Size					
	400	500	600	700	800	900
238.4 thru 437.9	1C1, 1C3/1C4					
536.3 thru 1207	1C3/1C4					
238.4 thru 437.9						
536.3 thru 1207						
804.5 thru 985.3						
1207	3A3 & 3A4					


TABLE 5 — Bearing Cross Reference

Falk No.	Manufacturer's Part No.	Manufacturer
919001	304W	Fafnir
919002	305	SKF
919010	6301/C3	SKF
919022	306W	Fafnir
919604	308WG	Fafnir
919606	6206NR/C3	SKF
919609	6305NR/C3	SKF
919612	6303NR/C3	SKF
919636	6304/C3	SKF
919645	6303/C3	SKF
919650	206NR	SKF
919663	312NR	SKF
919670	6206/C3	SKF
919691	310NR	SKF
919703	210NR	SKF
919704	215NR	SKF
921331	HM237545/HM237510	Timken
921492	HM807040/HM807010	Timken
921509	12580/12520	Timken
921529	H715345/H715311	Timken
921535	644/632	Timken
921541	HH224346/HH224310	Timken
921544	67390/67322	Timken
921548	64450/64700	Timken
921552	HH421246C/HH421210	Timken
921580	6559C/6536	Timken
921595	687/672	Timken
921599	48290/48220	Timken
921673	H715348/H715311	Timken
921696	2684/2631	Timken
921758	JHM522649/JHM522610 ♦	Timken
921809	5583/5535	Timken
921843	LM104949/JLM104910	Timken
921844	1755/1729	Timken
921847	3878/3820	Timken
921848	15126/15245	Timken
921919	82576/82931	Timken
921923	56425/56662	Timken
921924	JM734449/JM734410 ♦	Timken
2915366	23128CCK/C3-W33	SKF
2915368	22320CCK/C3-W33	SKF
2915374	22218CCK/C3-W33	SKF
2915376	22313CCK/C3-W33	SKF
2915618	23130CCK/C3-W33	SKF
2915620	22324CCK/C3-W33	SKF
2915623	23124CCK/C3-W33	SKF
2915625	22317CCK/C3-W33	SKF
2915636	22315CCK/C3-W33	SKF
2915638	23122CCK/C3-W33	SKF
2928702	7304 BECBY	SKF

♦ Class N Bearing

TABLE 4 — Falk Bearing Part Numbers ★

Ref. No.	Drive Size					
	400	500	600	700	800	900
1C1	†	‡	919670	919670	921843	921843
1C2	919645	919645	919645	919645	921844	921844
2A1	919010	919010	919636	921509	921696	921696
2A2	919612	919645	919650	921848	921696	921696
3A1	2928702	919002	919022	921847	921492	921492
3A2	●	919691	■	921535	921673	921673
4AB1	921809	921529	921580	921920	921541	921541
4AB1	921809	921529	921580	921920	921541	921541
5AB1	921595	921758	921544	921919	921331	921331
5AB2	921595	921758	921544	921919	921331	921331
5ABQ1	921548	921599	921544	921924	921331	921331
5ABQ2	921923	921599	921544	921924	921331	921331
7A1	2915376	2915636	2915625	2915368	2915620	2915620
7A2	2915374	2915638	2915623	2915366	2915618	2915618

★ Refer to Table 5 for manufacturers' numbers.

† Ratios 240.4 thru 450.8 — Falk Part No. 919606

Ratios 510.7 thru 1190 — Falk Part No. 919609

‡ Ratios 237.6 thru 544.9 — Falk Part No. 919606

Ratios 665.9 thru 1194 — Falk Part No. 919609

● Ratios 240.4 thru 798.5 — Falk Part No. 919604

Ratios 965.7 thru 1190 — Falk Part No. 919703

■ Ratios 235.9, 289.2, 357.8 & 633.7 — Falk Part No. 919663

Ratios 432.9, 519.4, 766.7, 919.9 & 1129 — Falk Part No. 919704

Seals

TABLE 6 — Grease Shields – Nilos

Falk No.	Nilos No.	Manufacturer
2907248	82576/82931AV	Timken
2907349	67390/67322AV	Timken
2907497	JHM522649/JHM522610AV	Timken
2907569	HM237545/HM237510AV	Timken
2907611	687/672AV	Timken
2907612	64450/64700AV	Timken
2907803	JM734449/JM734410AV	Timken
2907818	48290/48220AV	Timken

TABLE 8 — Seal Cross Reference

Falk No.	Manufacturer's Part No.	
	Chicago	National
912536	CRWA37389	...
912759	CRW32393	...
921667	CRWH57521	456666
912742	CRWA70080	477436
912746	CRWA13650	471192
912759	CRW32393	...
912787	CRWH47394	...
912818	CRWH44967	456888
912824	CRWH49966	455070
912832	CRWH64994	455294
912845	CRWA19831	...
912849	CRWA16062	473230
912861	CRWH42426	455195
2900292	CRWH52445	...
2908632	CRWH39997	455192

TABLE 7 — Falk Seal Part Numbers ★

Ref. No.	Drive Size					
	400	500	600	700	800	900
21	912746	912746	912849	912849	921845	912845
29	912759	912536	2908632	912787	2900292	2900292
34	2908632	912861	2900292	912667	912742	912742
35	912861	912824	2900292	912832	912742	912742
36	912818	912824	2900292	912832	912742	912742
37	2907611	2907497	2907349	2907248	2907569	2907569
38	2907612	2907818	2907349	2907803	2907569	2907569
39	912759	912536	912861	912787	2900292	2900292

★ Refer to Table 8 for manufacturers' numbers.