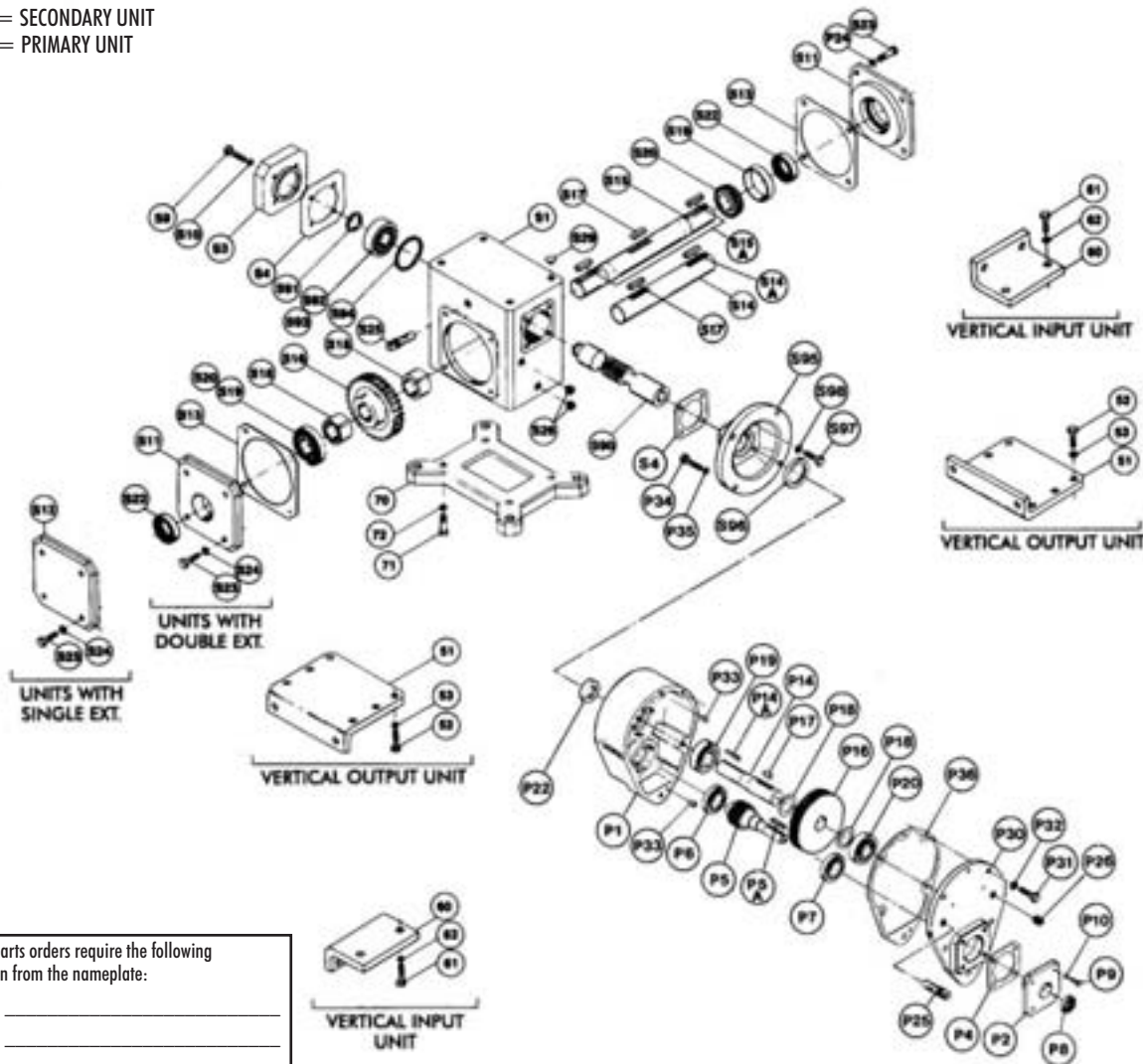


SOLID INPUT & OUTPUT SHAFT UNITS (See Page 2 for Hollow Output, Quill & Flange Input)

 S = SECONDARY UNIT
 P = PRIMARY UNIT


All spare parts orders require the following information from the nameplate:

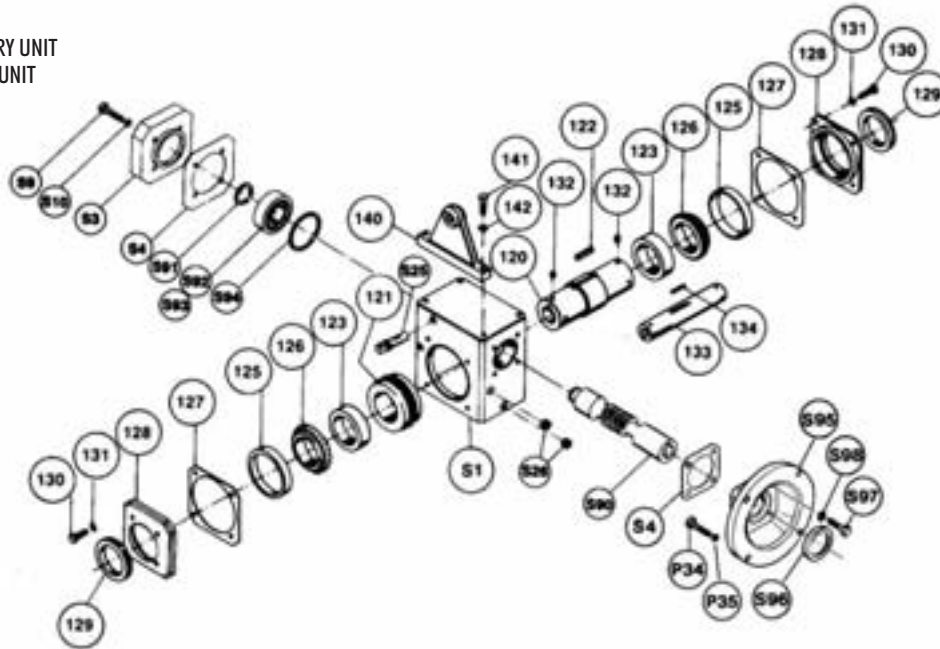
 Model No. _____
 Serial No. _____
 Ratio _____
 Motor Frame _____

Ref. No.	Part Description and Quantity	Ref. No.	Part Description and Quantity	Ref. No.	Part Description and Quantity
P1/S1	Housing (1)	P19	Bearing, Output Ball (1)	S93	Bearing Cone, Quill Input (2)
P2	Cover, Input-Seal (1)	S19	Bearing Cup, Output (2)	S94	Ring Retaining, for Ref. # S1 (1)
S3	Cover, Input-Bearing (1)	P20	Bearing, Output Ball (1)	S95	Flange, for Primary (1)
P4/S4	Shim-Gaskets, for Ref. # P2, S3, S95 (As req'd.)	S20	Bearing Cone, Output (2)	S96	Seal, Quill Input (1)
P5	Shaft, Input (1)	P22/S22	Seal, Output (1)	S97	Capscrew, for Ref. # S95 (4)
P6	Bearing, Input Ball (1)	S23	Capscrew, for Ref. # S11, S12 (8) ¹	S98	Lock Washer, for Ref. # S95 (4)
P7	Bearing, Input Ball (1)	S24	Lock Washer, for Ref. # S11, S12 (8) ¹		Vertical Output Unit (Secondary)
P8	Seal, Input (1)	P25/S25	Vent, Air (1)	51	Mounting Bracket (2)
P9/S9	Capscrew, for Ref. # P2, S3 (8)	P26/S26	Plug, Pipe (2)	52	Capscrew, for Ref. # 51 (8)
P10/S10	Lock Washer, for Ref. # P2, S3 (8)	S29	Plug, Protective (4)	53	Lock Washer, for Ref. # 51 (8)
S11	Cover, Output-Seal (1)	P30	Cover, Housing (1)		Vertical Input Unit (Secondary)
S12	Cover, Output-Bearing (1)	P31	Capscrew, for Ref. # P30 (5)	60	Mounting Bracket (2)
S13	Shim-Gaskets, for Ref. # S11, S12 (As req'd.)	P32	Lock Washer, for Ref. # P30 (5)	61	Capscrew, for Ref. # 60 (4)
P14/S14	Shaft, Output-Single Ext. (1)	P33	Pin, Dowel (2)	62	Lock Washer, for Ref. # 60 (4)
P14A	Key, Output Shaft (1)	P34	Capscrew, for Ref. # P1 (4)		Horizontal Output Unit (Secondary)
S15	Shaft, Output-Double Ext. (1)	P35	Lock Washer, for Ref. # P1 (4)	70	Horizontal Base (1)
P16	Gear, L.S. (1)	P36	Shim-Gasket, for Ref. # P30 (As req'd.)	71	Capscrew, for Ref. # 70 (4)
S16	Gear, Worm (1)	S90	Shaft, Input-Quill (1)	72	Lock Washer, for Ref. # 70 (4)
P17/S17	Key, for Ref. # P16, S16 (1)	S91	Ring Retaining, for Ref. # S90 (1)		
P18/S18	Spacer, for Ref. # P16, S16 (2)	S92	Bearing Cup, Quill Input (2)		

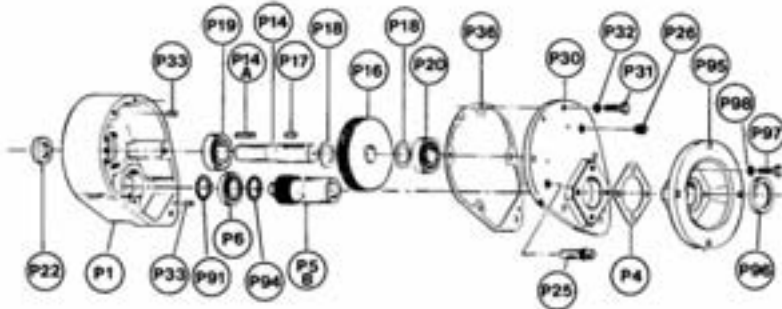
¹ Size 425 has 10 fasteners & lock washers and Sizes 525 & 600 have 16.

HOLLOW OUTPUT SHAFT (SECONDARY) UNITS

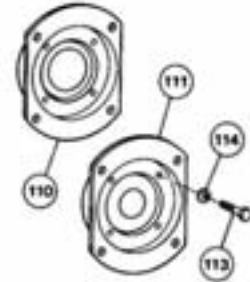
S = SECONDARY UNIT
P = PRIMARY UNIT



QUILL MOTOR FLANGE UNIT ¹
(PRIMARY)



FLANGED OUTPUT UNIT ¹
(SECONDARY)



Ref. No.	Part Description and Quantity	Ref. No.	Part Description and Quantity	Ref. No.	Part Description and Quantity
	Hollow Output Shaft Unit				
P1/S1	Housing (1)	121	Gear, Worm-Hollow (1)	P17	Key, for Ref. # P16 (1)
S3	Cover, Input-Bearing (1)	122	Key, for Ref. # 121 (1)	P18	Spacer, for Ref. # P16 (2)
P4/S4	Shim-Gaskets, for Ref. # S3, P95, S95 (As req'd.)	123	Spacer, for Ref. # 121 (2)	P19	Bearing, Output Ball (1)
S9	Capscrew, for Ref. # S3 (4)	125	Bearing Cup, Hollow Output (2)	P20	Bearing, Output Ball (1)
S10	Lock washer, for Ref. # S3 (4)	126	Bearing Cone, Hollow Output (2)	P22	Seal, Output (1)
P25/S25	Vent, Air (1)	127	Shim-Gaskets, for Ref. # 128 (As req'd.)	P25	Vent, Air (1)
P26/S26	Plug, Pipe (2)	128	Cover, Hollow Output (2)	P26	Plug, Pipe (2)
P34	Capscrew, for Ref. # P1 (4)	129	Seal, Hollow Output (2)	P30	Cover, Housing (1)
P35	Lock Washer, for Ref. # P1 (4)	130	Capscrew, for Ref. # 128 (8)	P31	Capscrew, for Ref. # P30 (5)
S90	Shaft, Input-Quill (1)	131	Lock Washer, for Ref. # 128 (8)	P32	Lock Washer, for Ref. # P30 (5)
P91	Ring Retaining, for Ref. # P5B (1)	132	Set Screw, for Ref. # 120 (6)	P33	Pin, Dowel (2)
S91	Ring Retaining, for Ref. # S90 (1)	133	Bushing, Hollow Shaft (1)	P36	Shim-Gasket, for Ref. # P30 (As req'd.)
S92	Bearing Cup, Quill Input (1)	134	Key, Hollow Shaft (1)	P95	Flange, Quill-Motor (1)
S93	Bearing Cone, Quill Input (1)	140	Bracket, Torque (1)	P96	Seal, Quill Input (1)
P94	Ring Retaining, for Ref. # P1 (1)	141	Capscrew, for Ref. # 140 (2)	P97	Capscrew, for Ref. # P95 (4)
S94	Ring Retaining, for Ref. # S1 (1)	142	Lock Washer, for Ref. # 140 (2)	P98	Lock Washer, for Ref. # P95 (4)
S95	Flange, for Primary (1)		Quill Motor Flange Unit (Primary)		Flanged Output Unit (Secondary)
S96	Seal, Quill Input (1)	P5B	Shaft, Input-Quill (1)	110	Flanged, Hollow Output (1)
S97	Capscrew, for Ref. # S95 (4)	P6	Bearing, Quill Input Ball (1)	111	Flanged, Solid Output (1)
S98	Lock Washer, for Ref. # S95 (4)	P14	Shaft, Output-Single Ext. (1)	113	Capscrew, for Ref. # 110, 111 (4)
120	Shaft, Hollow Output (1)	P14A	Key, Output Shaft (1)	114	Lock Washer, for Ref. # 110, 111 (4)
		P16	Gear, L.S. (1)		

¹ Balance of parts from drawings on Page 1 or 2.