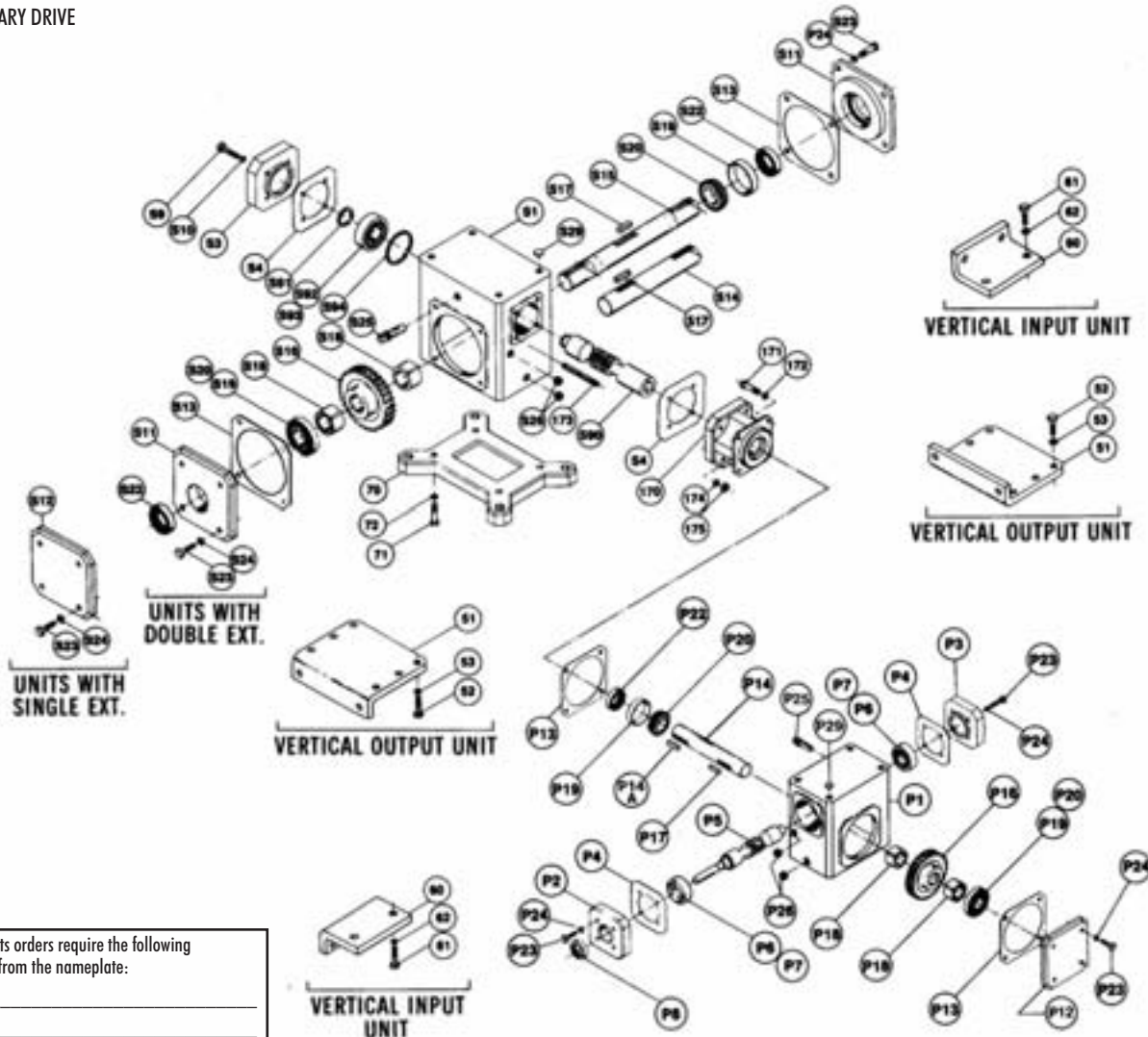


SOLID INPUT & OUTPUT SHAFT DRIVES (See Page 2 for Hollow Output, Quill & Flange Input)

 S = SECONDARY DRIVE
 P = PRIMARY DRIVE


All spare parts orders require the following information from the nameplate:

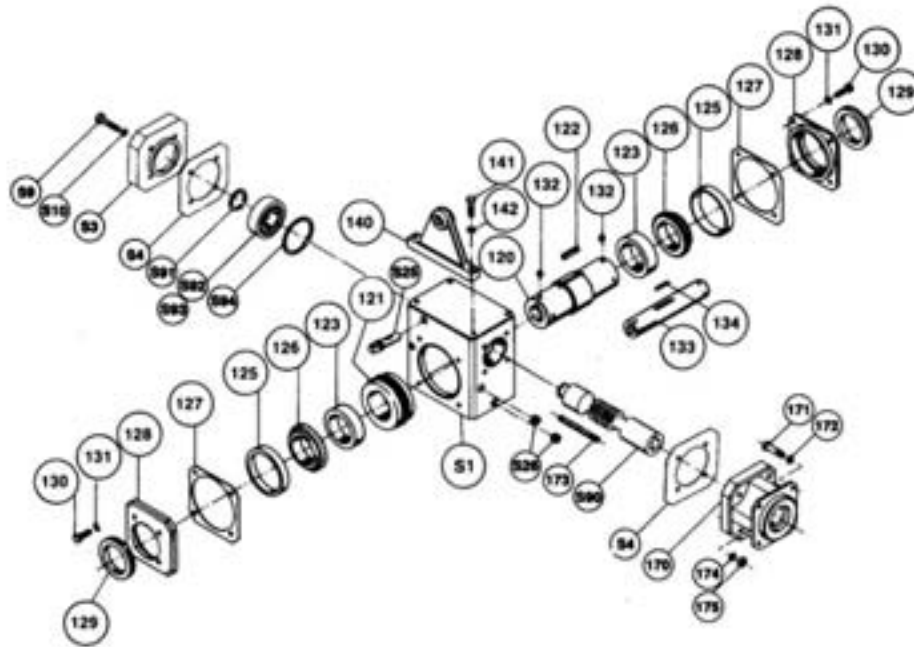
Model No. _____
 Serial No. _____
 Ratio _____
 Motor Frame _____

Ref. No.	Part Description and Quantity	Ref. No.	Part Description and Quantity	Ref. No.	Part Description and Quantity
P1/S1	Housing (1)	P18/S18	Spacer, for Ref. # P16, S16 (2)	174	Lock Washer, for Ref. # 170 (4)
P2	Cover, Input-Seal (1)	P19/S19	Bearing Cup, Output (2)	175	Lock Nut, for Ref. # 170 (4)
P3/S3	Cover, Input-Bearing (1)	P20/S20	Bearing Cone, Output (2)		Vertical Output Drive (Secondary)
P4/S4	Shim-Gaskets, for Ref. # P2, P3, S3, 170 (As req'd.)	P22/S22	Seal, Output (1)	51	Mounting Bracket (2)
P5	Shaft, Input (1)	P23/S23	Capscrew, for Ref. # P3, P12, S11, S12 (8) *	52	Capscrew, for Ref. # 51 (8)
P6	Bearing Cup, Input (2)	P24/S24	Lock Washer, for Ref. # P3, P12, S11, S12 (8) *	53	Lock Washer, for Ref. # 51 (8)
P7	Bearing Cone, Input (2)	P25/S25	Vent, air (1)		Vertical Input Drive (Secondary)
P8	Seal, Input (1)	P26/S26	Plug, Pipe, (2)	60	Mounting Bracket (2)
S9	Capscrew, for Ref. # S3 (8)	P29/S29	Plug, Protective (4)	61	Capscrew, for Ref. # 60 (4)
S10	Lock Washer, for Ref. # S3 (8)	S90	Shaft, Input-Quill (1)	62	Lock Washer, for Ref. # 60 (4)
S11	Cover, Output-Seal (1)	S91	Ring, Retaining, for Ref. # S90 (1)		Horizontal Output Drive (Secondary)
P12/S12	Cover, Output-Bearing (1)	S92	Bearing Cup, Quill Input (2)	70	Horizontal Base (1)
P13/S13	Shim-Gaskets, for Ref. # P12, S11, 170 (As req'd.)	S93	Bearing Cone, Quill Input (2)	71	Capscrew, for Ref. # 70 (4)
P14/S14	Shaft, Output-Single Ext. (1)	S94	Ring, Retaining, for Ref. # S1 (1)	72	Lock Washer, for Ref. # 70 (4)
P14A	Key, Output Shaft (1)	170	Adapter, for Primary (1)		
S15	Shaft, Output-Double Ext. (1)	171	Capscrew, for Ref. # P1 (4)		
P16/S16	Gear, Worm (1)	172	Lock Washer, for Ref. # P1 (4)		
P17/S17	Key, for Ref. # P16, S16 (1)	173	Stud Bolt, for Ref. # S1 (4)		

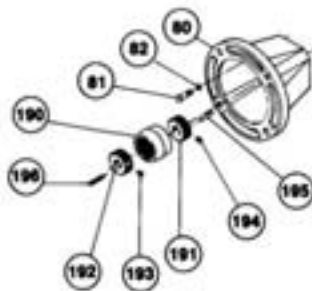
* Size 425 has 10 fasteners & lockwashers and Sizes 525 & 600 have 16.

HOLLOW OUTPUT SHAFT (SECONDARY) DRIVES

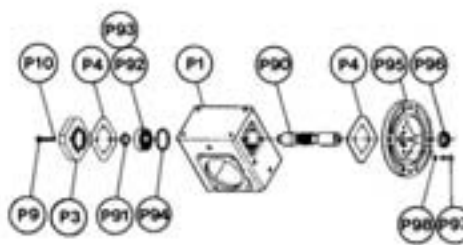
S = SECONDARY DRIVE
P = PRIMARY DRIVE



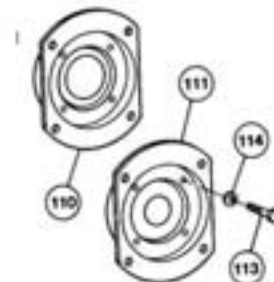
**LONG MOTOR FLANGE W/COUPLING *
(PRIMARY)**



**QUILL MOTOR FLANGE DRIVE *
(PRIMARY)**



**FLANGED OUTPUT DRIVE *
(SECONDARY)**



Ref. No.	Part Description and Quantity	Ref. No.	Part Description and Quantity	Ref. No.	Part Description and Quantity
	Hollow Output Shaft Drive	129	Seal, Hollow Output (2)	P92	Bearing Cup, Quill Input (1)
P1/S1	Housing (1)	130	Capscrew, for Ref. # 128 (8)	P93	Bearing Cone, Quill Input (1)
P3/S3	Cover, Input-Bearing (1)	131	Lock Washer, for Ref. # 128 (8)	P94	Ring, Retaining, for Ref. # P1 (1)
P4/S4	Shim-Gaskets, for Ref. # P3, S3, P95, 80, 170 (As req'd.)	132	Set Screw, for Ref. # 120 (6)	P95	Flange, Quill-Motor (1)
P9/S9	Capscrew, for Ref. # P3, S3 (8)	133	Bushing, Hollow Shaft (1)	P96	Seal, Quill Input (1)
P10/S10	Lock Washer, for Ref. # P3, S3 (8)	134	Key, Hollow Shaft (1)	P97	Capscrew, for Ref. # P95 (4)
S25	Vent, Air (1)	140	Bracket, Torque(1)	P98	Lock Washer, for Ref. # P95 (4)
S26	Plug, Pipe (2)	141	Capscrew, for Ref. # 140 (2)		Flange Output Drive (Secondary)
S90	Shaft, Input-FQuill (1)	142	Lock Washer, for Ref. # 140 (2)	110	Flange, Hollow Output (1)
S91	Ring, Retaining, for Ref. # S90 (1)	170	Adapter, for Primary (1)	111	Flange, Solid Output (1)
S92	Bearing Cup, Quill Input (1)	171	Adapter, for Ref. # 170 (4)	113	Capscrew, for Ref. # 110, 111 (4)
S93	Bearing Cone, Quill Input (1)	172	Lock Washer, for Ref. # 170 (4)	114	Lock Washer, for Ref. # 110, 111 (4)
S94	Ring, Retaining, for Ref. # S1 (1)	173	Stud Bolt, for Ref. # S1 (4)		Coupling Kit (Primary)
120	Shaft, Hollow Output (1)	174	Lock Washer, for Ref. # 170 (4)	190	Sleeve, Coupling (1)
121	Gear, Worm-Hollow (1)	175	Lock Nut, for Ref. # 170 (4)	191	Gear, Coupling (1)
122	Key, for Ref. # 121 (1)			192	Gear, Coupling (1)
123	Spacer, for Ref. # 121 (2)		Long Motor Flange Drive (Primary)	193	Set Screw, for Ref. # 190 (1)
125	Bearing Cup, Hollow Output (2)	80	Flange, Motor-"C" Face (1)	194	Set Screw, for Ref. # 191 (1)
126	Bearing Cone, Hollow Output (2)	81	Capscrew, for Ref. # 80 (4)	195	Key, Coupling (1)
127	Shim-Gaskets, for Ref. # 128 (As req'd.)	82	Lock Washer, for Ref. # 80 (4)	196	Key, Coupling (1)
128	Cover, Hollow Output (2)	P90	Shaft, Input-Quill (1)		
		P91	Ring, Retaining, for Ref. # P90 (1)		

* Balance of parts from drawings on Page 1 or 2.