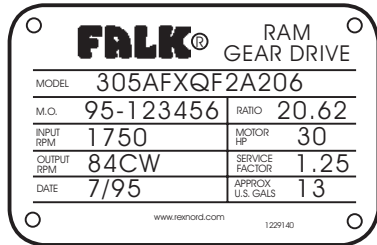


### Introduction

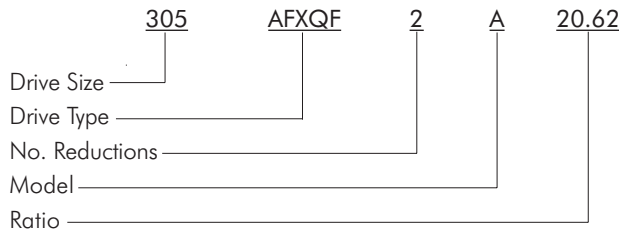
This parts guide is designed to assist in ordering replacement parts for standard Types AFXD, AFXU, and AFXQ double reduction (ratios 5.06 thru 31.85) right angle vertical gear drives. Refer to Factory for special or modified drives.

- IDENTIFY DRIVE** — Record Drive, Model, Ratio, and M.O. Number from nameplate.

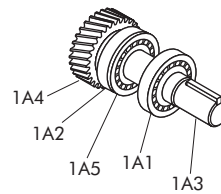
### Sample Nameplate



### Gear Drive Identification



- IDENTIFY INDIVIDUAL PARTS** — Use exploded view on Page 2 to determine Ref. No. of required parts.



| Ref. No | Part Description |
|---------|------------------|
| 1A1     | Bearing          |
| 1A2     | Bearing          |
| 1A3     | Shaft            |
| 1A4     | Pinion           |
| 1A5     | Spacer           |

*NOTE: Shaft hardware is included with shafts. Replace seals, shims, and gaskets whenever reassembling a drive.*

- HOW TO USE THIS GUIDE** — Use the Part Ref. No. (Step 2) and the drive Model No. (Step 1) to determine the part description and use this information to order the required parts.
- DOES THIS RESTRICTION APPLY?** — Components shown (in non-shaded area in Table 3, Page 4, are Falk assembled using high interference fits and CANNOT be replaced individually. Use Drive Size and Ratio to determine if this restriction applies.
- ORDER REPLACEMENT** — Place your order with your local Rexnord Representative or Distributor. If you need assistance call the number below.

### Bearing & Seal Identification

Refer to the exploded views and Tables 1 and 2 on Pages 2 and 3 to identify the bearings and oil seals by the parts list Reference Number. Then refer to Tables 4 thru 8, Page 4, to determine the manufacturer and manufacturer's part number.

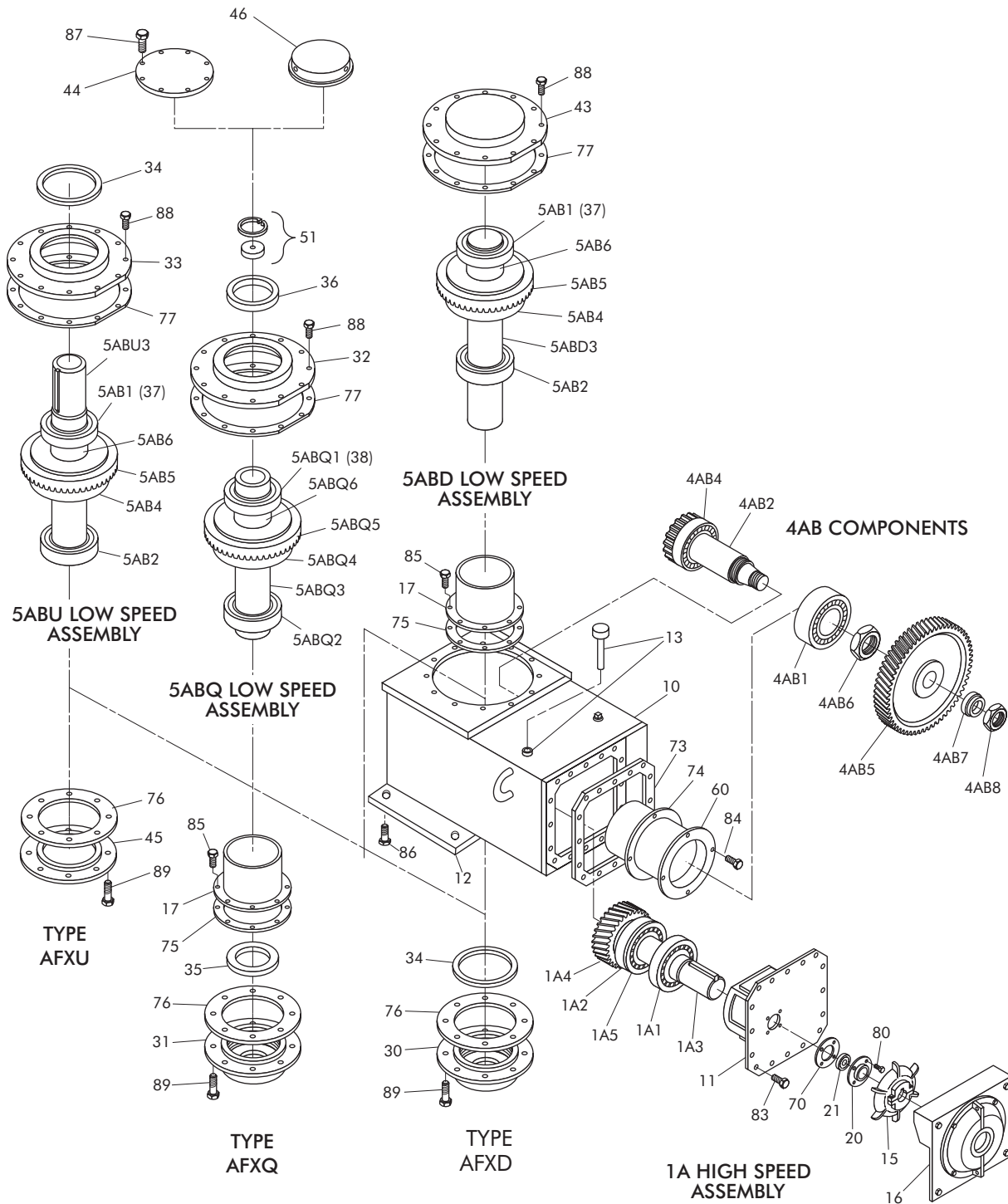
### Corrosion Protection & Storage

**CAUTION:** Follow guidelines below to avoid damage to parts.

- For domestic or indoor storage, Factory provides standard 24 month protection as boxed or optional 24 month protection for individual parts.
- For export or outdoor storage, Factory provides optional 18 month protection.

**CAUTION:** This protection does not cover exposure to elements such as standing water, etc.

### Parts Diagram



Refer to Page 4 to determine the availability of individual components.

## Reference Numbers

**TABLE 1 — Housing Parts List**

| Ref. No.   | Part Description   |
|------------|--|
| 10         | Housing  |
| 11         | Head   |
| 12         | Adapter Base   |
| 13         | Dipstick   |
| 15         | Fan  |
| 16         | Fan Guard & Baffle   |
| 17         | Oil Dam  |
| 20         | Seal Cage, Replace with Ref. No. 120                             |
| 21         | Seal   |
| 30         | Seal Cage, Lower   |
| 31         | Seal Cage, Lower   |
| 32         | Seal Cage, Upper   |
| 33         | Seal Cage, Upper   |
| 34         | Seal   |
| 35         | Seal, Lower  |
| 36         | Seal, Upper  |
| 37         | Grease Shield, Nilos   |
| 38         | Grease Shield, Nilos   |
| 43         | Shaft Cover, Upper   |
| 44         | Shaft Cover, Upper, Size 284                                     |
| 45         | Shaft Cover, Lower   |
| 46         | Shaft Cover, Upper, Sizes 305–388                                |
| 51         | Thrust Plate Kit   |
| 60         | Bearing Cage   |
| 70 thru 77 | Shim Gaskets available as a Kit (Specify Ref. No. 100)           |
| 80 thru 89 | Fasteners available as a Kit (Specify Ref. No. 110)              |
| 100        | Shim-Gasket Kit (Incls. Ref. No. 70, 73, 74, 75, 76 & 77)        |
| 110        | Fastener Kit — AFX (Incls. Ref. No. 80, 83, 84, 85, 87, 88 & 89) |
| 120        | Seal Cage ASSEMBLY (Incls. Ref. No. 20, 21, & 70)                |

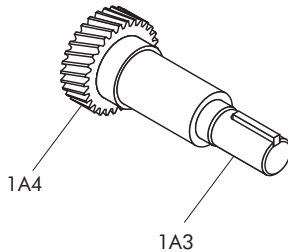
**TABLE 2 — Shaft Assemblies Parts List**

| Ref. No.                             | Part Description  |
|--------------------------------------|---|
| 1A                                   | Shaft Assembly (Incls. Ref. No. 1A1 thru 1A5)                                   |
| 1A1                                  | Bearing   |
| 1A2                                  | Bearing   |
| 1A3                                  | Shaft   |
| 1A4                                  | Pinion  |
| 1A5                                  | Spacer, Sizes 284 & 305   |
| <b>Bevel Pinion Shaft Components</b> |   |
| 4AB1                                 | Bearing   |
| 4AB2                                 | Bearing   |
| 4AB4                                 | Bevel Pinion (Replace with Ref. 6AB/6ABQ) ★                                     |
| 4AB5                                 | Gear  |
| 4AB6                                 | Locknut & Washers   |
| 4AB7                                 | Spacer, Size 388  |
| 4AB8                                 | Locknut   |
| 5ABU/D                               | <b>Shaft Assembly (Incls. Ref. No. 5AB1 thru 5AB6, except 5AB5)</b>             |
| 5AB1                                 | Bearing (Incls. Ref. No. 37)  |
| 5AB2                                 | Bearing   |
| 5ABU3/D3                             | Shaft   |
| 5AB4                                 | Umbrella  |
| 5AB5                                 | Bevel Gear (Replace with 6AB) ★   |
| 5AB6                                 | Spacer  |
| 6AB                                  | Bevel Gear Set (Incls. Ref. No. 4AB4, 4AB6, 4AB8, 5AB5)                         |
| 5ABQ                                 | <b>Shaft Assembly (Incls. Ref. No. 5ABQ1 thru 5ABQ6, except 5ABQ5 &amp; 51)</b> |
| 5ABQ1                                | Bearing (Incls. Ref. No. 38)  |
| 5ABQ2                                | Bearing   |
| 5ABQ3                                | Shaft (Hollow)  |
| 5ABQ4                                | Umbrella  |
| 5ABQ5                                | Bevel Gear (Replace with 6ABQ) ★  |
| 5ABQ6                                | Spacer  |
| 6ABQ                                 | Bevel Gear Set (Incls. Ref. No. 4AB4, 4AB6, 4AB8, 5ABQ5)                        |

★ Bevel gear and pinion must be ordered in matched sets.

## Bearings & Seals

**FACTORY ASSEMBLED COMPONENTS** — Individual components for Drive Sizes and ratios shown in the SCREENED areas maybe ordered separately. Shaft 1A3 and Pinion 1A4 are integral components for the ratios identified in Table 3.



**TABLE 3 — 1A Shaft Assembly**

| Ratio                   | Drive Size |     |     |     |     |
|-------------------------|------------|-----|-----|-----|-----|
|                         | 284        | 305 | 326 | 357 | 388 |
| 5.06<br>thru<br>17.09   |            |     |     |     |     |
| 20.93<br>25.63<br>31.39 |            |     |     |     |     |
|                         | 1A3 & 1A4  |     |     |     |     |

**TABLE 4 — Falk Bearing Part Numbers ★**

| Ref. No.     | Drive Size |        |        |        |        |
|--------------|------------|--------|--------|--------|--------|
|              | 284        | 305    | 326    | 357    | 388    |
| <b>1A1</b>   | 919610     | 919660 | 921810 | 921810 | 921449 |
| <b>1A2</b>   | †          | ‡      | 921811 | 921730 | •      |
| <b>4AB1</b>  | 921809     | 921529 | 921580 | 921920 | 921541 |
| <b>4AB2</b>  | 921809     | 921529 | 921580 | 921552 | 921541 |
| <b>5AB1</b>  | 921595     | 921758 | 921544 | 921919 | 921331 |
| <b>5AB2</b>  | 921595     | 921758 | 921544 | 921919 | 921331 |
| <b>5ABQ1</b> | 921548     | 921599 | 921544 | 921924 | 921331 |
| <b>5ABQ2</b> | 921923     | 921599 | 921544 | 921924 | 921331 |

★ Refer to Table 6 for manufacturer's numbers.  
 † Ratios 4.938 thru 16.99 — Falk Part No. 920557  
 Ratios 21.19 thru 31.58 — Falk Part No. 919691  
 ‡ Ratios 5.018 thru 13.56 — Falk Part No. 920536  
 Ratios 17.40 thru 31.21 — Falk Part No. 919622  
 • Ratios 4.984 thru 21.21 — Falk Part No. 921661  
 Ratios 24.82 thru 31.85 — Falk Part No. 921662

**TABLE 5 — Grease Shields – Nilos**

| Falk No.       | Nilos No.             | Manufacturer |
|----------------|-----------------------|--------------|
| <b>2907248</b> | 82576/82931AV         | Timken       |
| <b>2907349</b> | 67390/67322AV         | Timken       |
| <b>2907497</b> | JHM522649/JHM522610AV | Timken       |
| <b>2907569</b> | HM237545/HM237510AV   | Timken       |
| <b>2907611</b> | 687/672AV             | Timken       |
| <b>2907612</b> | 64450/64700AV         | Timken       |
| <b>2907803</b> | JM734449/JM734410AV   | Timken       |
| <b>2907818</b> | 48290/48220AV         | Timken       |

**TABLE 6 — Bearing Manufacturer's Part Numbers**

| Falk No.      | Manufacturers' Part No. | Manufacturer |
|---------------|-------------------------|--------------|
| <b>919610</b> | 6310NR/C3               | SKF          |
| <b>919622</b> | 313NR                   | SKF          |
| <b>919660</b> | 6313NR/C3               | SKF          |
| <b>919691</b> | 310NR                   | SKF          |
| <b>920536</b> | U1313B                  | Rollway      |
| <b>920557</b> | U1310B                  | Rollway      |
| <b>921331</b> | HM237545/HM237510       | Timken       |
| <b>921449</b> | 842/832                 | Timken       |
| <b>921529</b> | H715345/H715311         | Timken       |
| <b>921541</b> | HH224346/HH224310       | Timken       |
| <b>921544</b> | 67390/67322             | Timken       |
| <b>921548</b> | 64450/64700             | Timken       |
| <b>921552</b> | HH421246/HH421210       | Timken       |
| <b>921580</b> | 6559C/6536              | Timken       |
| <b>921595</b> | 687/672                 | Timken       |
| <b>921599</b> | 48290/48220             | Timken       |
| <b>921661</b> | 835/832B                | Timken       |
| <b>921662</b> | 842/832B                | Timken       |
| <b>921730</b> | 755/752B                | Timken       |
| <b>921758</b> | JHM522649/JHM522610 ★   | Timken       |
| <b>921809</b> | 5583/5535               | Timken       |
| <b>921810</b> | 745A/742                | Timken       |
| <b>921811</b> | 745A/742B               | Timken       |
| <b>921919</b> | 82576/82931             | Timken       |
| <b>921920</b> | 90381/90744             | Timken       |
| <b>921923</b> | 56425/56662             | Timken       |
| <b>921924</b> | JM734449/JM734410 ★     | Timken       |

★ Class N Bearing

**TABLE 7 — Falk Seal Part Numbers ★**

| Ref. No.  | Drive Size |         |         |         |         |
|-----------|------------|---------|---------|---------|---------|
|           | 284        | 305     | 326     | 357     | 388     |
| <b>21</b> | 912805     | 912835  | 912781  | 912781  | 912758  |
| <b>34</b> | 2908632    | 912861  | 2900292 | 912667  | 912742  |
| <b>35</b> | 912861     | 912824  | 2900292 | 912832  | 912742  |
| <b>36</b> | 912818     | 912824  | 2900292 | 912832  | 912742  |
| <b>37</b> | 2907611    | 2907497 | 2907349 | 2907248 | 2907569 |
| <b>38</b> | 2907612    | 2907818 | 2907349 | 2907803 | 2907569 |

★ Refer to Table 8 for manufacturer's numbers.

**TABLE 8 — Seal Manufacturer's Part Numbers**

| Falk No.       | Manufacturer's Part No. |          |
|----------------|-------------------------|----------|
|                | Chicago                 | National |
| <b>912667</b>  | CRWH57521               | 456666   |
| <b>912742</b>  | CRWA70080               | 477436   |
| <b>912758</b>  | CRWA29906               | ...      |
| <b>912781</b>  | CRWA26237               | ...      |
| <b>912805</b>  | CRWA23701               | ...      |
| <b>912818</b>  | CRWH44967               | 456888   |
| <b>912824</b>  | CRWH49966               | 455070   |
| <b>912832</b>  | CRWH64994               | 455294   |
| <b>912835</b>  | CRWA29865               | ...      |
| <b>912861</b>  | CRWH42426               | 455195   |
| <b>2900292</b> | CRWH52445               | ...      |
| <b>2908632</b> | CRWH39997               | 455192   |