

How to Order Repair Parts

1. Give complete reducer nameplate data: Model, M.O., RPM, HP, Date and Ratio.
2. Give reference number and name of parts desired. Drawings and photographs are representative of all sizes and may not agree in exact detail with drive. Complete nameplate data will assure receipt of the correct parts.



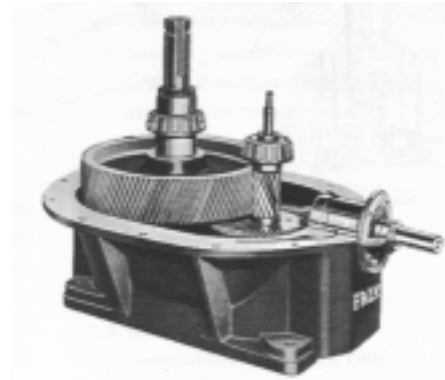
GEARS FOR STANDARD RATIOS — This sheet applies to drives with current standard ratios as shown in the Selection Guide. This will approximately include all Right Angle Vertical Shaft Speed Reducers after M.O. 115-000 of May 1938. All units purchased before M.O. 115-000, and a few after, contain gears of an obsolete standard. Refer spare parts inquiries for these drives to Falk for pricing and availability.

BEVEL GEAR STANDARDS — Spiral bevel gear standards were recently changed so some replacement gear ratios will vary from the ratio originally furnished, but in no case will this variance exceed 1%. Spiral bevel gears are sold only as sets. In the final stages of manufacture, the pinion and gear are lapped together to insure proper tooth contact.

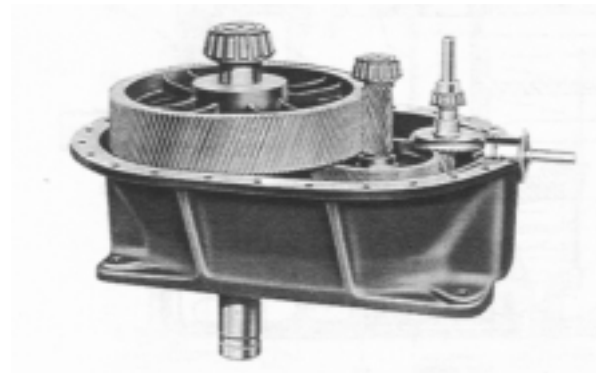
GEARS FOR SPECIAL RATIOS — Consult Falk for prices of special ratio spare gears.

GEARS FOR CHANGING RATIOS — If a set of gears of a new standard ratio is required, new operating capacities should be checked in the Selection Guide.

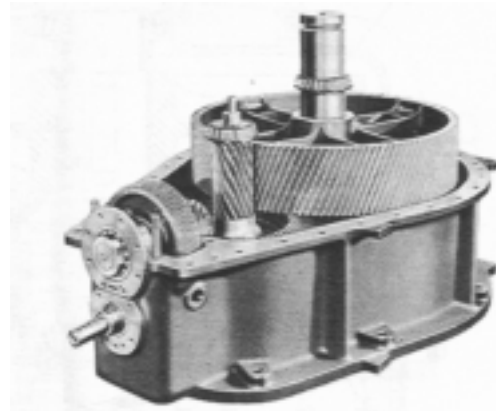
LOW SPEED ROLLER BEARINGS — Standard Right Angle Vertical Shaft Speed Reducers are available with bearings for a variety of applications. In addition to normal thrust and normal radial bearings, standard drives may have extra capacity thrust bearings or extra capacity radial bearings. To be absolutely certain of the type of bearings used in a specific drive, consult Falk.



Double Reduction
 Sizes 4 thru 12
 Ratio Range 5.7:1 to 43.5:1



Triple Reduction
 Sizes 4 thru 8
 Ratio Range 52:1 to 430:1

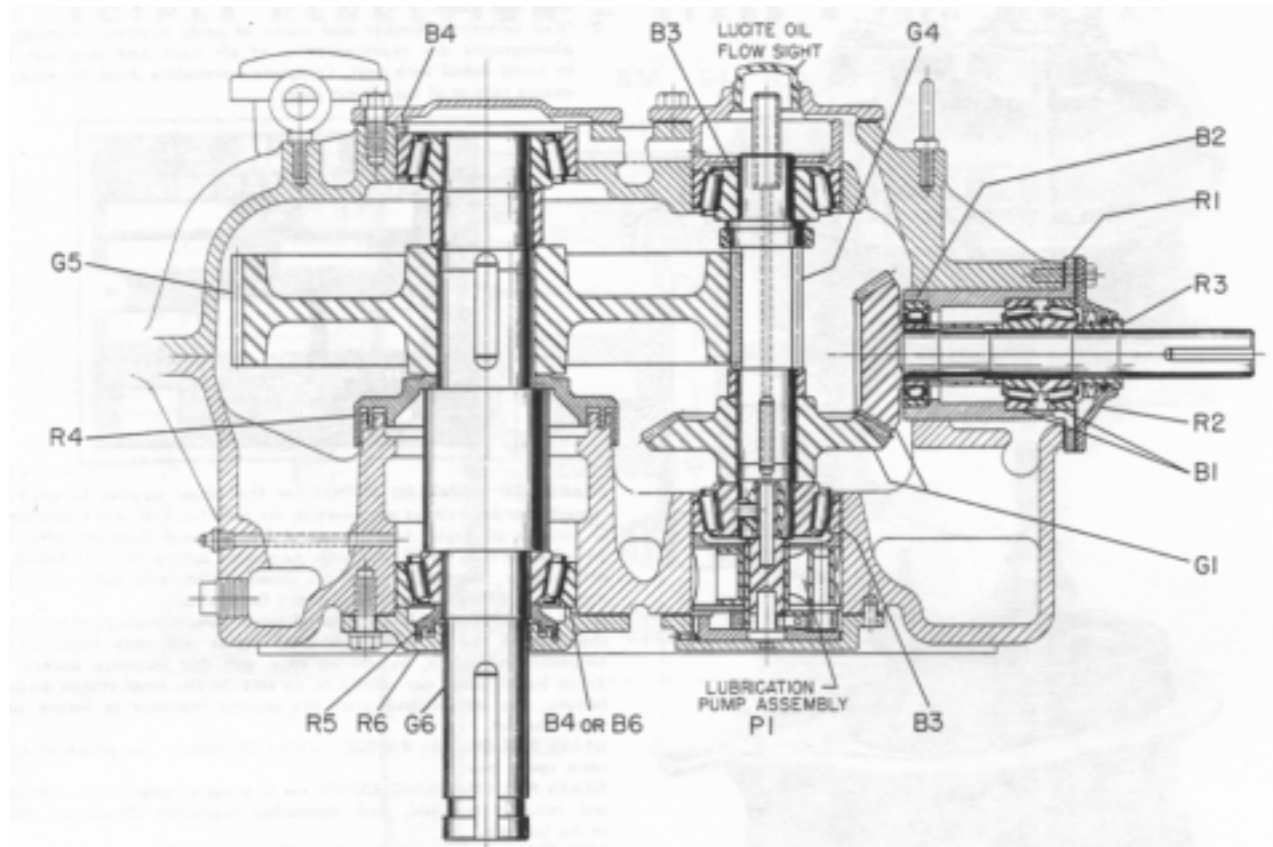


Triple Reduction
 Sizes 9 thru 12
 Ratio Range 53:1 to 289:1

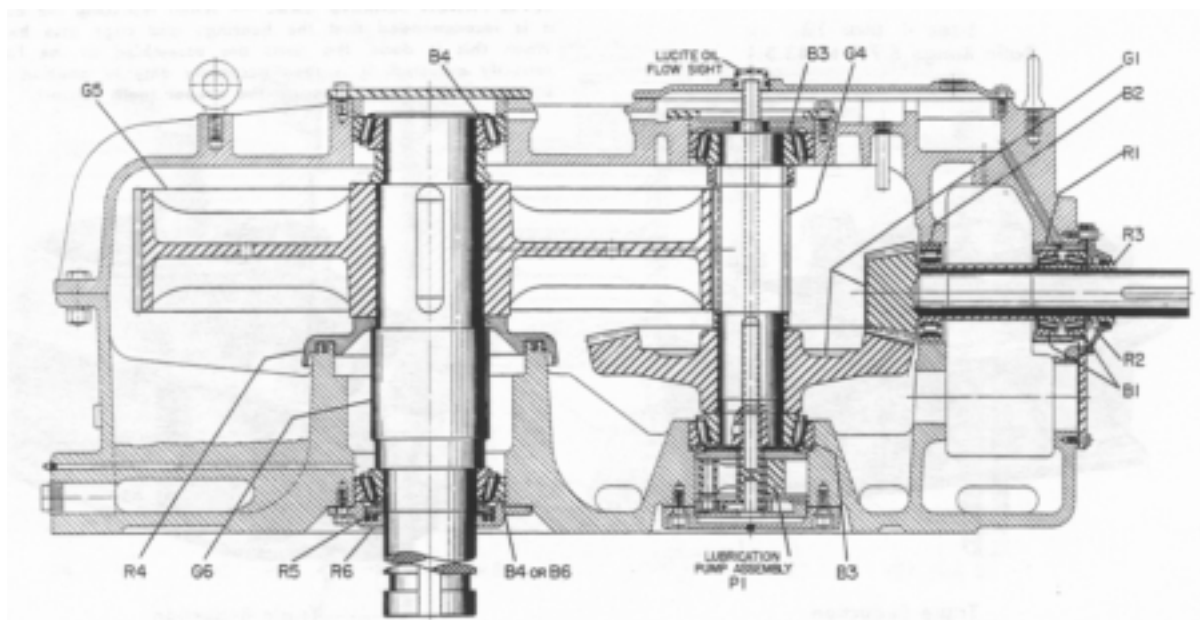
LOW SPEED GEARS — For ease of assembly, it is recommended that low speed gears be purchased complete with shaft.

BEVEL PINION BEARING CAGE — When replacing the bevel gears, it is recommended that the bearings and cage also be replaced. When this is done, the parts are assembled at the Factory and correctly adjusted. It is then necessary only to position the pinion by means of shims to secure the proper tooth contact.

Double Reduction — Sizes 4 thru 8 GDX*



Double Reduction — Sizes 9 thru 12 GDX*

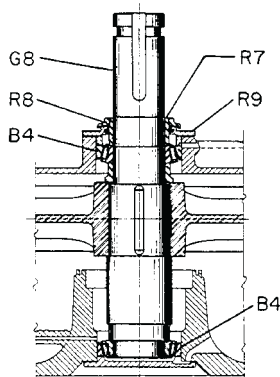


* See Page 3 for alternate low speed shaft assemblies.

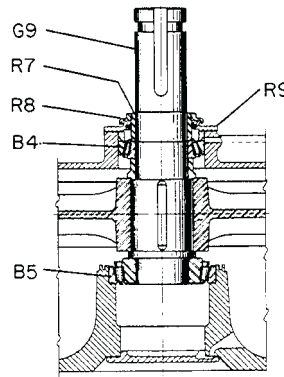
Spare Parts

Part No.	Description
BEARINGS	
B1	Bevel Pinion Outer Bearings (2)
B1A	High Speed Helical Pinion Outer Bearings (1)
B2	Bevel Pinion Inner Bearing (1)
B2A	High Speed Helical Pinion Inner Bearing (1)
B3	Bevel Gear Bearings (2)
B3A	Int. Helical Gear Bearings (2)
B4	Low Speed Bearings, Standard (2)
B5	Low Speed Bearing, Extra Thrust Capacity (1)
B6	Low Speed Bearing, Extra Radial Capacity (1)
CAGES, RETAINERS & SEALS	
R1	Bevel Pinion Bearing Cage
R2	High Speed Oil Retainer
R3	High Speed Shrink Collar
R4	Low Speed Labyrinth Oil Deflector
R5	Low Speed Labyrinth Oil Seal
R6	Low Speed Lower Oil Retainer — GDX, GRX
R7	Low Speed Shrink Collar
R8	Low Speed Hood
R9	Low Speed Upper Oil Retainer
R10	Low Speed Slinger
R11	Low Speed Lower Oil Retainer — GDXX, GRXX
GEARS, PINIONS & SHAFTS	
G1	Bevel Gear, Pinion and Shaft
G2	High Speed Helical Pinion
G2A	High Speed Helical Gear
G3	Intermediate Helical Pinion
G3A	Intermediate Helical Gear
G4	Low Speed Helical Pinion
G5	Low Speed Helical Gear without Shaft
G6	Low Speed Shaft, Ext. Down — GDX, GRX
G7	Low Speed Shaft, Ext. Down — GDXX, GRXX
G8	Low Speed Shaft, Ext. Up — GDX, GRX
G9	Low Speed Shaft, Ext. Up — GDXX, GRXX
P1	Lubrication Pump Assembly

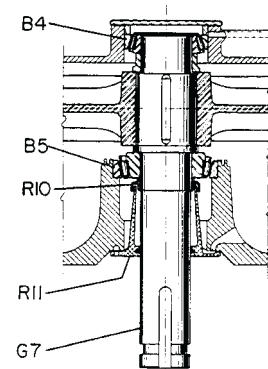
Alternate Low Speed Shaft Assemblies



Sizes 4 thru 12 GDX and GRX
Standard Bearings

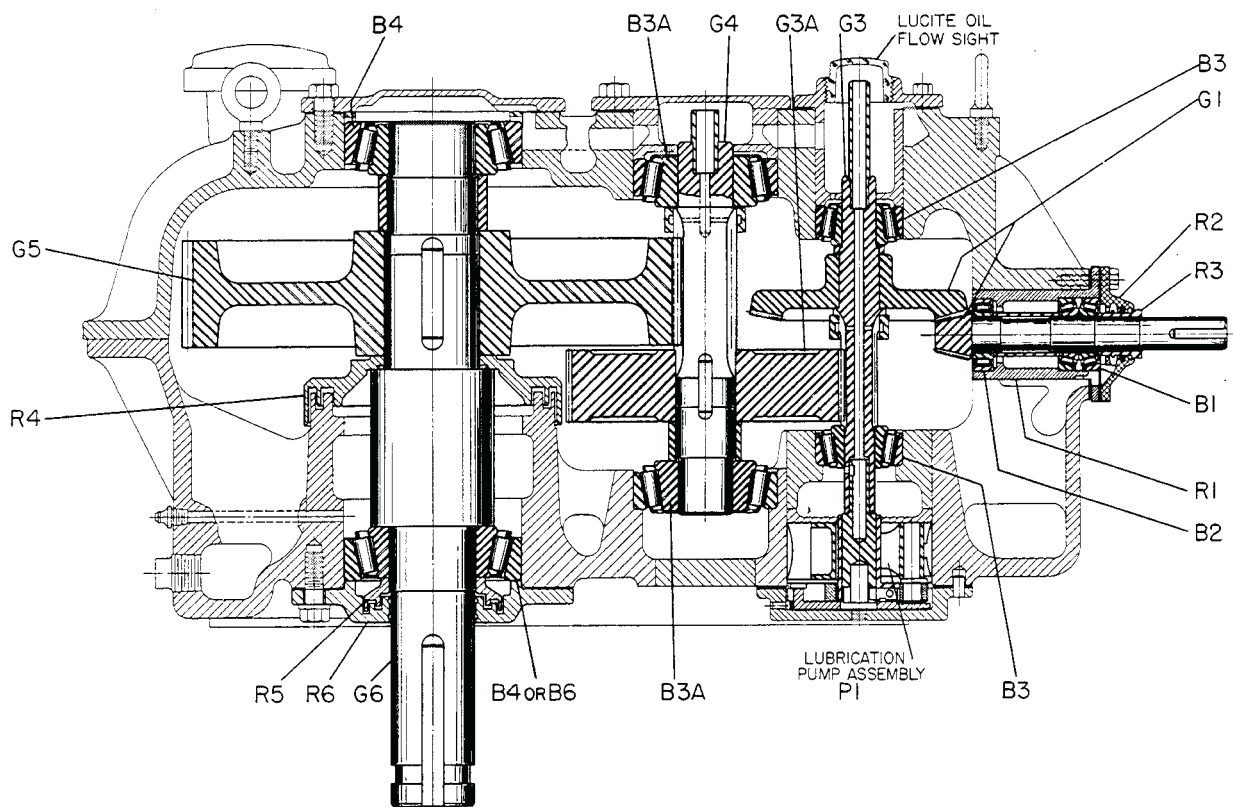


Sizes 4 thru 12 GDXX and GRXX Extra
Thrust Capacity Bearings

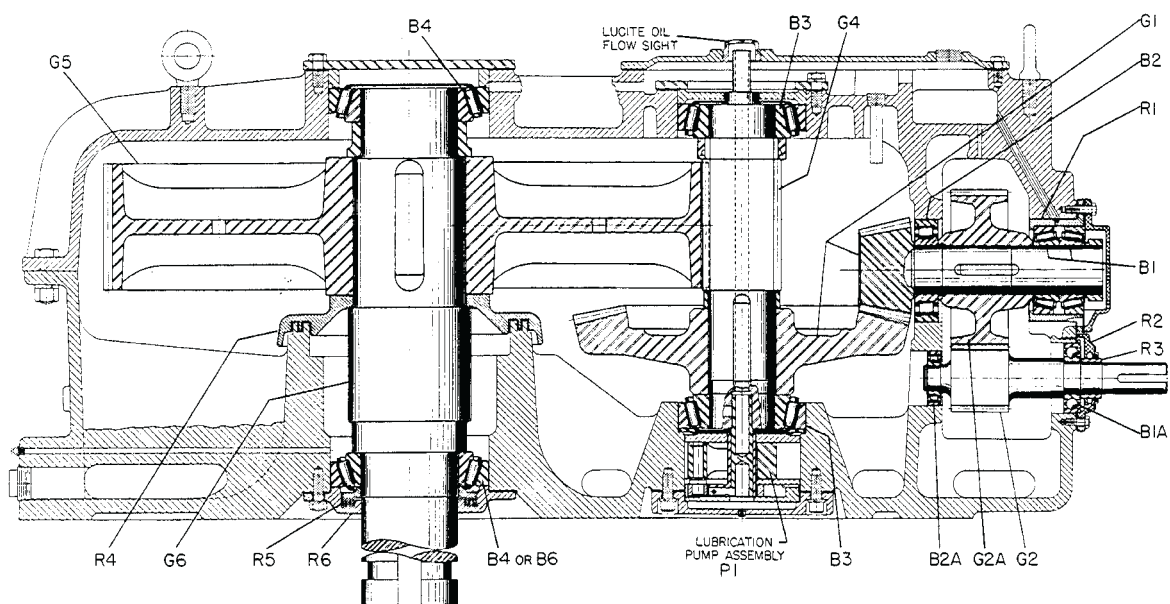


Sizes 4 thru 12 GDXX and GRXX Extra
Thrust Capacity Bearings

Triple Reduction — Sizes 4 thru 8 GR_X*



Triple Reduction — Sizes 9 thru 12 GR_X*



* See Page 3 for alternate low speed shaft assemblies.