

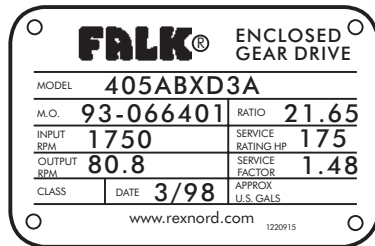
## Introduction

This literature applies to standard gear drives with ratings, speeds, ratios, and dimensions as catalogued in current Rexnord selection guides. The low speed shaft may be configured up (U) or down (D). Refer to Factory for all specials and modifications.

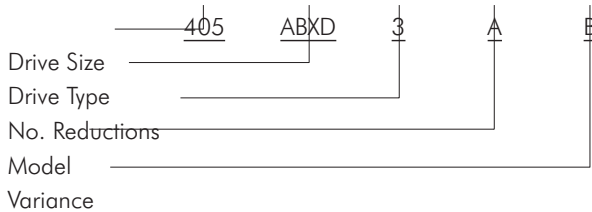
- IDENTIFY DRIVE** — Give complete data shown on drive nameplate. Also, give reference numbers, Falk™ part numbers, and name of parts required. Drawings and reference numbers are representative of all sizes and the actual parts may not agree in exact detail for each drive size. Complete nameplate data and parts reference number will assure receipt of correct parts.

The numerical designation stamped on the nameplate completely identifies all parts used in the drive. All drives with exactly the same nameplate markings have interchangeable rotating elements.

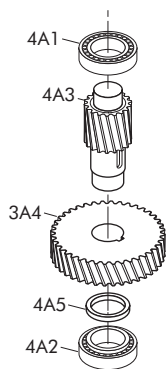
### Sample Nameplate



### Drive Identification



- IDENTIFY INDIVIDUAL PARTS** — Use exploded view on Page 2 to determine Ref. No. of required parts.



4A ASSEMBLY

Ref. No.	Part Description
3A4	Gear
4A1	Bearing
4A2	Bearing
4A3	Pinion & Shaft
4A5	Spacer

**NOTE:** It is recommended that the shaft seals be replaced whenever it becomes necessary to disturb a seal in the process of disassembling a drive. New Shim-gaskets are recommended to prevent oil leakage and in some cases necessary to adjust internal running clearances. Shim-gaskets are available only in kits; see Ref. No. 100.

**BEVEL GEARING** — Bevel gearing is manufactured in matched and marked sets to ensure proper tooth contact. Unless bevel pinions and gears are installed as matched sets, in accordance with the instructions in Rexnord service manuals, Rexnord cannot be responsible for the rating, life, noise, or performance of the parts or the products receiving them.

**PINION-SHAFT-BEARING ASSEMBLIES** — With today's production procedures, Rexnord can normally furnish a total rotating assembly more economically than if a customer purchases individual parts, disassembles the old parts, and reassembles using some new and some old parts. Falk™ replacement assemblies also reduce down time and always consist of all new parts.

**FASTENERS** — Fasteners are sold in sets for a specific item, i.e. four for an end cover, eight for a low speed seal cage, etc. Fasteners describe cap screws, bolts, studs, nuts, and lock washers as required.

**RATIO CHANGE** — Refer complete information to Factory.

**SHAFT COUPLINGS** — Refer to coupling parts guide and price list.

- HOW TO USE THIS GUIDE** — Use the Part Ref. No. (Step 2) and the drive Model No. (Step 1) to determine the part description and use this information to order the required parts.
- ORDER REPLACEMENT** — Place your order with your local Rexnord Account Executive. If you need assistance call the number below.

## Bearing & Seal Identification

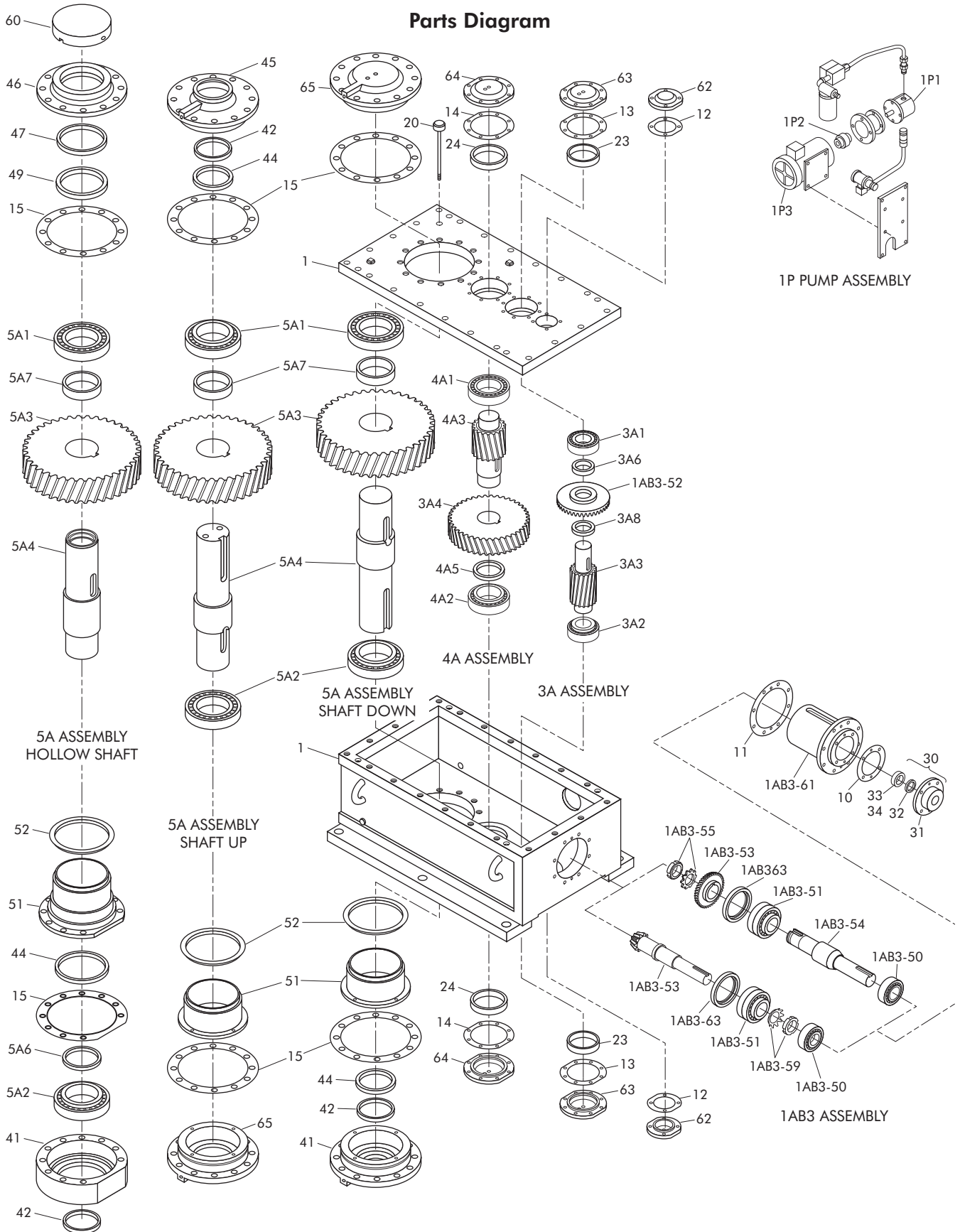
Refer to the exploded views on Page 2 to identify the bearings and oil seals by the parts list Reference Number. Then refer to Tables 2 thru 5, Pages 3 and 4, to determine the Manufacturer and Manufacturer's part number.

## Corrosion Protection & Storage

**CAUTION:** Follow guidelines below to avoid damage to parts.

- For domestic or indoor storage, Factory provides standard 24 month protection as boxed or optional 24 month protection for individual parts.
- For export or outdoor storage, Factory provides optional 18 month protection.

**CAUTION:** This protection does not cover exposure to elements such as standing water, etc.



**TABLE 1 — Parts List**

Ref. No.	Part Description	Drive Type
1	Housing - Cover & Base	ABX, ABXQ
10	Shim - Gasket	ABX, ABXQ
11	Shim - Gasket	ABX, ABXQ
12	Shim - Gasket	ABX, ABXQ
13	Shim - Gasket	ABX, ABXQ
14	Shim - Gasket	ABX, ABXQ
15	Shim - Gasket	ABX, ABXQ
20	Dipstick	ABX, ABXQ
23	Spacer	ABX, ABXQ
24	Spacer	ABX, ABXQ
30	Seal Cage Assy. (Inc. Ref. Nos. 31 thru 33)	ABX, ABXQ
31	Seal Cage	ABX, ABXQ
32	Seal	ABX, ABXQ
33	Bush Seal	ABX, ABXQ
34	Seal	ABX, ABXQ
41	Bearing/Seal Cage	ABX, ABXQ
42	Seal	ABX, ABXQ
44	Seal	ABX, ABXQ
45	Bearing/Seal Cage	ABX
46	Seal Cage	ABXQ
47	Seal	ABXQ
49	Seal	ABXQ
51	Oil Dam	ABX, ABXQ
52	Seal	ABX, ABXQ
60	Shaft Cover	ABXQ
62	Shaft Cover (Sizes 405 thru 465)	ABX, ABXQ
63	Shaft Cover	ABX, ABXQ
64	Shaft Cover	ABX, ABXQ
65	Bearing Cage/Cover	ABX
100	Shim - Gasket Kit (Inc. Ref. Nos. 10 -15)	ABX, ABXQ
<b>HIGH SPEED SHAFT ASSEMBLY — WITH INTEGRAL PINION</b>		
1AB3	Shaft Assembly (Inc. Ref. Nos. 1AB3-50 thru 1AB3-63 & Ref. No. 30)	ABX, ABXQ
1AB3-50	Bearing	ABX, ABXQ
1AB3-51	Bearing	ABX, ABXQ
1AB3-52	Bevel Gear (Matched set with 1AB3-53)	ABX, ABXQ
1AB3-53	Bevel Pinion & Shaft (Matched set w/ 1AB3-52)	ABX, ABXQ
1AB3-59	Locknut & Washer	ABX, ABXQ
1AB3-61	Bearing Cage	ABX, ABXQ
1AB3-63	Threaded Ring	ABX, ABXQ
<b>HIGH SPEED SHAFT ASSEMBLY — WITH BORED PINION</b>		
1AB3	Shaft Assembly (Inc. Ref. Nos. 1AB3-50 thru 1AB3-63 & Ref. No. 30)	ABX, ABXQ
1AB3-50	Bearing	ABX, ABXQ
1AB3-51	Bearing	ABX, ABXQ
1AB3-52	Bevel Gear (Matched set with 1AB3-53)	ABX, ABXQ
1AB3-53	Bevel Pinion (Matched set with 1AB3-52)	ABX, ABXQ
1AB3-54	Shaft	ABX, ABXQ
1AB3-55	Locknut & Washer	ABX, ABXQ
1AB3-61	Bearing Cage	ABX, ABXQ
1AB3-63	Threaded Ring	ABX, ABXQ
<b>EXTERNAL LUBRICATION PUMP</b>		
1P	Pump Assembly	ABX, ABXQ
1P1	Pump	ABX, ABXQ
1P2	Coupling	ABX, ABXQ
1P3	Motor	ABX, ABXQ
<b>INTERMEDIATE SHAFT ASSEMBLY</b>		
3A	Shaft Assembly (Inc. Ref. Nos. 3A1 thru 3A8 & 1AB3-52)	ABX, ABXQ
3A1	Bearing	ABX, ABXQ
3A2	Bearing	ABX, ABXQ
3A3	Pinion & Shaft	ABX, ABXQ
3A4	Gear (Included with Ref No. 4A)	ABX, ABXQ
3A6	Spacer	ABX, ABXQ
3A8	Spacer (Sizes 405, 465 & 485)	ABX, ABXQ
<b>LOW SPEED PINION ASSEMBLY</b>		
4A	Shaft Assembly (Inc. Ref. Nos. 4A1 thru 4A5 & 3A-4)	ABX, ABXQ
4A1	Bearing	ABX, ABXQ
4A2	Bearing	ABX, ABXQ
4A3	Pinion & Shaft	ABX, ABXQ
4A5	Spacer	ABX, ABXQ

**TABLE 1 — Parts List (Cont'd)**

Ref. No.	Part Description	Drive Type
<b>LOW SPEED SHAFT ASSEMBLY</b>		
5A	Shaft Assembly (Inc. Ref. No. 5A1 thru 5A7)	ABX, ABXQ
5A1	Bearing	ABX, ABXQ
5A2	Bearing	ABX, ABXQ
5A3	Gear	ABX, ABXQ
5A4	Shaft	ABX, ABXQ
5A6	Spacer (Size 405 only)	ABX, ABXQ
5A7	Spacer	ABX, ABXQ

**TABLE 2 — Oil Seals/Falk Part Numbers**

DRIVE SIZE	Reference No. & Type									
	32	33	42		44		47	49	52	
	ABX & ABXQ	ABX & ABXQ	ABX	ABXQ	ABX	ABXQ	ABXQ	ABXQ	ABX & ABXQ	ABX & ABXQ
405	913018	5741073	913000	912816	913001	912767	912816	912833	2912858	
425	912993	5741339	913016	912767	913017	912827	2913531	912767	2913534	
445	912993	5741339	913004	912578	913005	912580	912672	912578	2912448	
465	913030	5743622	913023	912580	913024	912550	912580	912940	2912803	
485	912995	5741071	2913169	912550	2913170	912808	912550	2913168	2913172	
505	913028	5743648	912809	913025	912769	912905	912809	2913977	2917215	
535	913028	5743648	2918393	2900932	2903222	912842	2900932	2913542	2914611	
555	913014	5741076	912550	912903	913034	2918744	912902	912903	2918891	

**TABLE 3 — Bearings/Falk™ Part Numbers**

DRIVE SIZE	Reference No. & Type									
	1AB3-50	1AB3-51	3A1	3A2	4A1	4A2	5A1	5A2	5A1	5A2
	ABX & ABXQ	ABX & ABXQ	ABX & ABXQ	ABX & ABXQ	ABX & ABXQ	ABX & ABXQ	ABX	ABX	ABXQ	ABXQ
405	920615	921820	921809 ★	921809 ★	921899	921899	921674	921674	921331	921331
425	919242	921815	921895	921895	921552	921552	921881	921881	921759	921759
445	919242	921817	921678	921678 †	921443	921443	921439	921439	2912892	2912892
465	920698	921821	921443	921551 ‡	921541	921541	2912611	2912611	2912802	2912802
485	919065	921819	921541	921459 ●	921470	921470	921788	921788	2913166	2913166
505	920713	921818	921470	921470	921481	921481	921791	921791	2917124	2917124
535	920713	921818	921470	921470	921901	921901	2918718	291794	2918385	2918385
555	921911	921911	921481	921481	921906	921906	2918739	2918739	2918740	2918741

★ Use 2916560 for ratios 14.38 thru 32.07, Model D.

† Use 921899 for ratios 22.83 thru 71.22.

‡ Use 921443 for ratios 13.82 thru 20.99 &amp; 34.54.

● Use 921541 for ratios 14.16 thru 22.55.

**TABLE 4 — Seal Manufacturers' Part Numbers**

Falk™ Part No.	Manufacturers' No.
912550	CRWHI-115021
912578	JM/16554-LUP
912580	JM/1000-9830-LPD
912672	CR90006
912767	CRWH77540
912769	CR92536
912808	CR1300570
912809	CR122580
912816	CR70016
912827	CRWH85009
912833	CR70052
912842	JM101516LUPHL15 ▲
912902	CR1500240
912903	CR1500380
912905	CR1375240
912940	JM/17846LDS
912993	CRWH24914(V)
912995	CRWH34892(V)
913000	CRWH52447(V)
913001	CRWH52489(V)
913004	CRWH64998(V)
913005	JM/8950LUP-H5/L16(V)
913014	CRWH44973(V)
913016	CRWH57522(V)
913017	CRWH57523(V)
913018	CRW17379(V)
913023	JM/12094LUP
913024	JM/8951LUP
913025	NAT416257
913028	CRWH37405(V)
913030	JM14042LPDH5/L16(V)
913034	JM/10509H1L5LUP
2900932	CR1350250HSD1
2903222	CR105051
2912448	CR402750
2912803	CR403250
2912858	CR402202
2913168	CRWH115041
2913169	CRWHI80010
2913170	CRWHI80037
2913172	CR403500
2913531	CR77530
2913534	CR402500
2913542	CR1350542HDS-Z
2913977	CR1225525HDS2
2914611	CR404500V450A
2917215	CR403750
2918393	CR1050240-HDSI
2918744	CR1625243-HS52
2918891	CR405000

▲ Manufacturer is J.M. Clipper.

**TABLE 5 — Bearing Manufacturers' Part Numbers**

Falk™ Part No.	Manufacturers' No.
919065	SKF22218CC/C3W33
919242	SKF22313CC/C3W33
920615	LB/MU-5309-TV
920698	SKF22314C/C3W33
920713	LB/MU-5220-TV
921331	TIMHM237510/HM237545
921439	TIMHM237535/HM237510
921443	TIMHH221449/HH221410
921459	TIMHH224335/HH224310
921470	TIMHH228349/HH228310
921481	TIMHH234048/TIMHH234010
921541	TIMHH224346/HH224310
921551	TIMHH221430/HH221410
921552	TIMHH421246C/HH421210
921674	TIM95528/95925
921678	TIM850/832
921759	TIMJHM840449/JHM840410
921788	TIMH242649/H242610
921791	TIMH247549/H247510
921794	TIMH852849/H852810
921809	TIM5583/5535
921815 ▼	TIM9285-90022(TDO)
921817 ▼	TIM9380-9000159(TDO)
921818 ▼	TIMHH924349/HH924310D(TDO)
921819 ▼	TIMH924045/H924010D(TDO)
921820 ▼	TIM72225C-907A1(TDO)
921881	TIM99575/99100
921895	TIMH715346/H715311
921899	TIM843/832
921901	TIMHH437549/TIMHH437510
921906	TIMNP180202/NP513983
921911	TIMHH932132/HH932110
2912611	TIMH239649/H239610
2912802	TIMEE275100/EE275155
2912892	TIMEE130902/EE131400
2913166	TIMEE722115/EE722185
2916560	NP747110/NP520308
2917124	TIMH859049/H859010
2918385	TIMNPR08-9386
2918718	TIMEE295110/EE295133
2918739	TIMHH258248/HH258210
2918740	TIMM268730/M268710
2918741	TIMNPR08-9500

▼ Double row (TDO) tapered roller bearings must be purchased per the manufacturer's assembly part number, or Falk™ part number, to obtain correct bearing end play.