

### How To Use This Manual

This document provides detailed instructions on the assembly and installation of the torque arm for an Alignment Free Drive.

**CAREFULLY FOLLOW THE INSTRUCTIONS IN THIS MANUAL FOR OPTIMUM PERFORMANCE AND TROUBLE FREE SERVICE.**

### Introduction

The following instructions apply to Alignment Free Drives Type DB horizontal-right angle shaft enclosed gear drives.

**WARNING:** Consult applicable local and national safety codes for proper guarding of rotating members. Lock out power source and remove any external loads from drive before installation of torque arm.

### Required Equipment

Standard metric mechanics tools and a crane or hoist to hold the weight of the drive during installation is required.

### Supplied Parts

Table 1 lists torque arm parts shipped loose to be assembled at installation of drive.

### Torque Arm Assembly Instructions

Verify that all components listed in Table 1 have been shipped. Drive must be securely supported until torque arm installation and adjustments are complete. See Figure 1 for assembly detail.

1. Mark threads of male rod end one shank diameter from end of threaded portion with marker, paint pen, etc. Thread nut onto shank of male rod end beyond mark.
2. Thread male rod end into female rod end. A minimum thread engagement of one diameter is required (thread to mark or further). Position heads of rod ends perpendicular to each other and tighten jam nut.

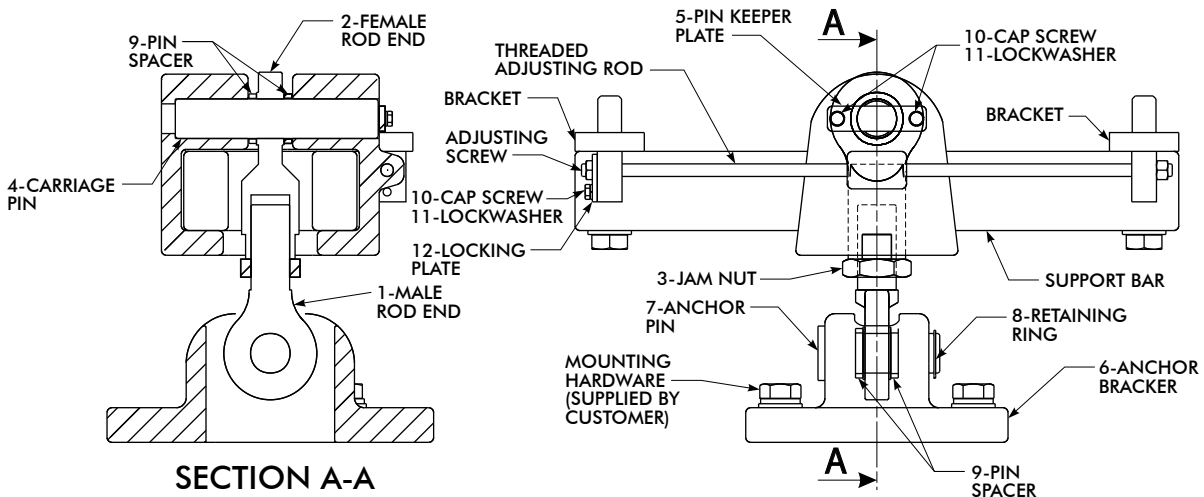
**Table 1 — Loose Parts - Falk Part Numbers**

Item No.	Part Description	Bell Housing Casting Number ★		Qty
		D011723 D011724	D011725 D011726 D012042	
1	Male Rod End	D012052	D012054	1
2	Female Rod End	D012051	D012053	1
3	Jam Nut	D012055	D012056	1
4	Carriage Pin	D012037	D012039	1
5	Pin Keeper Plate	D012041	D012041	1
6	Anchor Bracket	D012036	D012036	1
7	Anchor Pin	D012038	D012040	1
8	Retaining Ring	D006778	D003779	1
9	Pin Spacer	D012357	D012358	4
10	Cap screw (M8 x 20)	1900030	1900030	3
11	Lockwasher (8mm)	1906003	1906003	3
12	Locking Plate	D012046	D012046	1

★ Bell housing casting number can be found on the inside sidewall of the bell housing.

3. Shuttle carriage to side of housing if fluid coupling is installed to facilitate pin installation. Clean pin hole in carriage if required. Insert pin through carriage and female rod end with a spacer on each side of head. Install pin keeper plate to retain pin.
4. Install the male rod end in the anchor bracket with pin and spacer on each side of head, secure with retaining ring. Loosen jam nut and adjust height if necessary to level drive, (heads of rod ends must remain perpendicular to each other).
5. Line up anchor bracket with foundation by adjust side to side position with adjusting rod.
 

**WARNING:** Adjustment to torque arm can only be made in an unloaded condition. Drive must be supported during adjustment.
6. Mount anchor bracket to foundation. Use slots in bracket and adjusting rod to position torque arm vertical. Install locking plate on adjusting rod.



**FIGURE 1**