

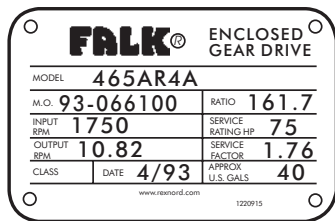
Introduction

This literature applies to Type AR & ARJ standard quadruple reduction gear drives with horizontal axis high and low speed shafts; and with ratings, speeds, ratios, and dimensions as catalogued in current Falk™ selection guides. The low speed shaft may be configured left or right when viewing the high speed end. Refer to Rexnord for all specials and modifications.

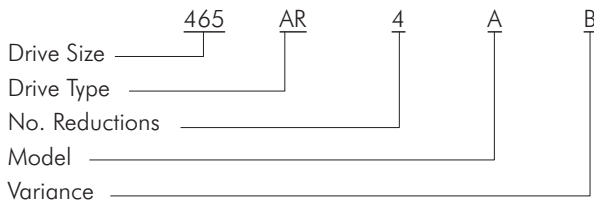
- IDENTIFY DRIVE** — Give complete data shown on drive nameplate. Also, give reference numbers, Falk™ part numbers, and name of parts required. Drawings and reference numbers are representative of all sizes and the actual parts may not agree in exact detail for each drive size. Complete nameplate data and parts reference number will assure receipt of correct parts.

The numerical designation stamped on the nameplate completely identifies all parts used in the drive. All drives with exactly the same nameplate markings have interchangeable rotating elements.

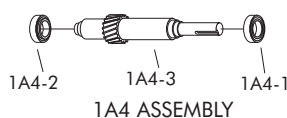
Sample Nameplate



Drive Identification



- IDENTIFY INDIVIDUAL PARTS** — Use exploded view on Page 2 to determine Ref. No. of required parts.



Ref. No.	Part Description
1A4-1	Bearing
1A4-2	Bearing
1A4-3	Pinion & Shaft

NOTE: It is recommended that the shaft seals be replaced whenever it becomes necessary to disturb a seal in the process of disassembling a drive. New Shim-gaskets are recommended to prevent oil leakage and in some cases necessary to adjust internal running clearances. Shim-gaskets are available only in kits; see Ref. No. 100.

PINION-SHAFT-BEARING ASSEMBLIES — With today's production procedures, Rexnord can normally furnish a total rotating assembly more economically than if a customer purchases individual parts, disassembles the old parts, and reassembles using some new and some old parts. Falk™ replacement assemblies also reduce down time and always consist of all new parts.

FASTENERS — Fasteners are sold in sets for a specific item, i.e. four for an end cover, eight for a low speed seal cage, etc. Fasteners describe cap screws, bolts, studs, nuts, and lock washers as required.

RATIO CHANGE — Refer complete information to Factory.

SHAFT COUPLINGS — Refer to coupling parts guide and price list.

- HOW TO USE THIS GUIDE** — Use the Part Ref. No. (Step 2) and the drive Model No. (Step 1) to determine the part description and use this information to order the required parts.

- ORDER REPLACEMENT** — Place your order with your local Account Executive or Distributor. If you need assistance call the number below.

Bearing & Seal Identification

Refer to the exploded views on Page 2 to identify the bearings and oil seals by the parts list Reference Number. Then refer to Tables 2 thru 5, Pages 3 and 4, to determine the Manufacturer and Manufacturer's part number.

Corrosion Protection & Storage

CAUTION: Follow guidelines below to avoid damage to parts.

- For domestic or indoor storage, Factory provides standard 24 month protection as boxed or optional 24 month protection for individual parts.
- For export or outdoor storage, Factory provides optional 18 month protection.

CAUTION: This protection does not cover exposure to elements such as standing water, etc.

Parts Diagram

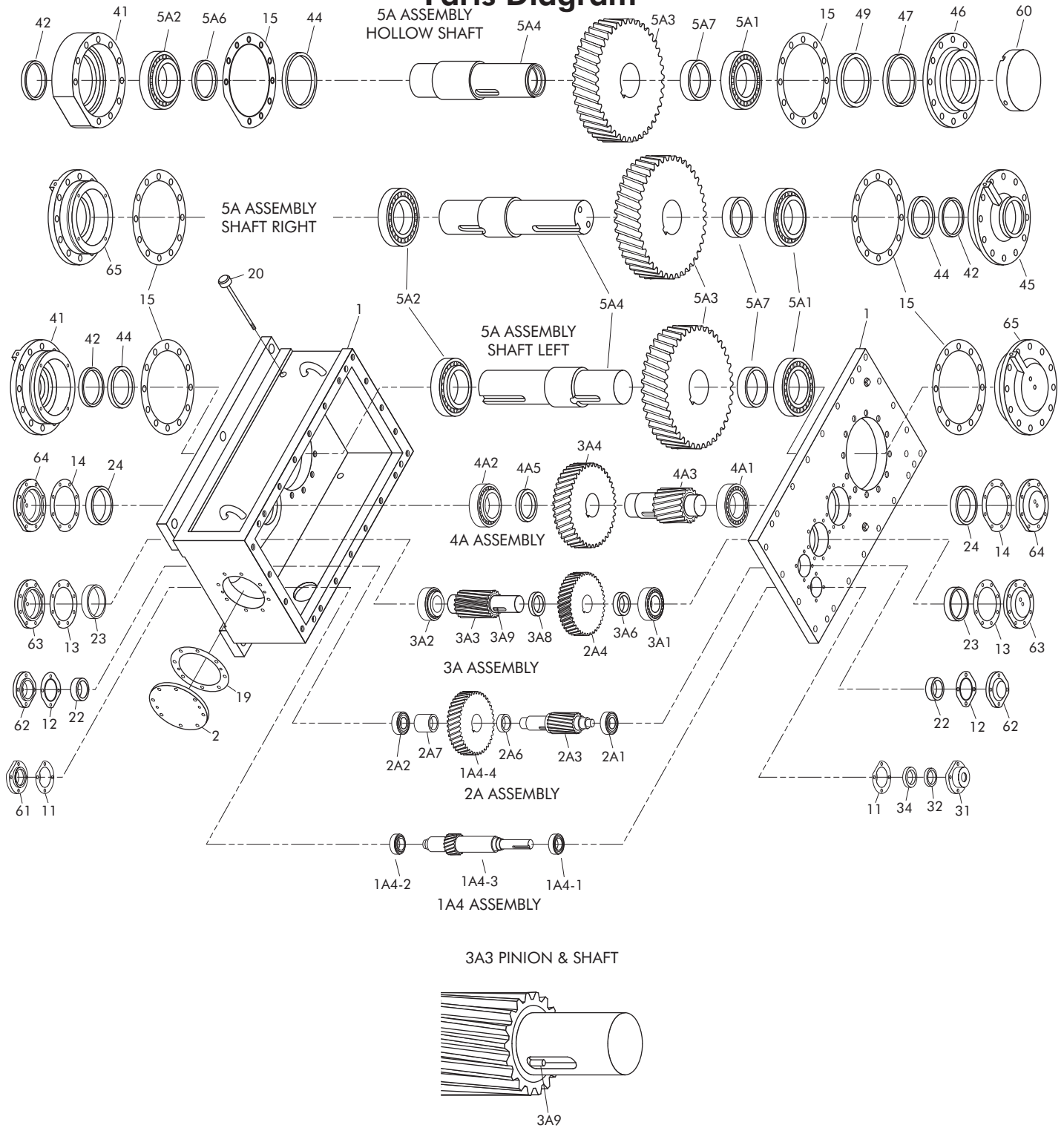




TABLE 1 — Parts List

Ref. No.	Part Description	Drive Type
1	Housing - Cover & Base	AR, ARJ
2	End Cover	AR, ARJ
11	Shim - Gasket	AR, ARJ
12	Shim - Gasket	AR, ARJ
13	Shim - Gasket	AR, ARJ
14	Shim - Gasket	AR, ARJ
15	Shim - Gasket	AR, ARJ
19	Shim - Gasket	AR, ARJ
20	Dipstick	AR, ARJ
22	Spacer	AR, ARJ
23	Spacer	AR, ARJ
24	Spacer	AR, ARJ
31	Seal Cage	AR, ARJ
32	Seal	AR, ARJ
34	Seal	AR, ARJ
41	Bearing/Seal Cage	AR, ARJ
42	Seal	AR, ARJ
44	Seal	AR, ARJ
45	Bearing/Seal Cage	AR
46	Seal Cage	ARJ
47	Seal	ARJ
49	Seal	ARJ
60	Shaft Cover	ARJ
61	Shaft Cover	AR, ARJ
62	Shaft Cover	AR, ARJ
63	Shaft Cover	AR, ARJ
64	Shaft Cover	AR, ARJ
65	Bearing Cage/Cover	AR
100	Shim - Gasket Kit (Inc. Ref. Nos. 12, 13, 14, 15 & 19)	AR, ARJ
HIGH SPEED SHAFT ASSEMBLY		
1A4	Shaft Assembly (Inc. Ref. Nos. 1A4-1, 1A4-2 & 1A4-3)	AR, ARJ
1A4-1	Bearing	AR, ARJ
1A4-2	Bearing	AR, ARJ
1A4-3	Pinion & Shaft	AR, ARJ
1A4-4	Gear (Inc. with Ref. No. 2A)	AR, ARJ
1ST INTERMEDIATE SHAFT ASSEMBLY		
2A	Shaft assembly (Inc. Ref. Nos. 2A1 thru 2A7 & 1A4-4)	AR, ARJ
2A1	Bearing	AR, ARJ
2A2	Bearing	AR, ARJ
2A3	Pinion & Shaft	AR, ARJ
2A4	Gear (Included with Ref. No. 3A)	AR, ARJ
2A6	Spacer (Sizes 425, 445 & 465)	AR, ARJ
2A7	Spacer	AR, ARJ
INTERMEDIATE SHAFT ASSEMBLY		
3A	Shaft Assembly (Inc. Ref. Nos. 3A1 thru 3A9 & 1A3-4)	AR, ARJ
3A1	Bearing	AR, ARJ
3A2	Bearing	AR, ARJ
3A3	Pinion & Shaft	AR, ARJ
3A4	Gear (Included with Ref. No. 4A)	AR, ARJ
3A6	Spacer	AR, ARJ
3A8	Spacer (Sizes 405 & 425)	AR, ARJ
3A9	Spring Pin (Size 405)	AR, ARJ
LOW SPEED PINION ASSEMBLY		
4A	Shaft Assembly (Inc. Ref. Nos. 4A1 thru 4A5 & 1A2-4)	AR, ARJ
4A1	Bearing	AR, ARJ
4A2	Bearing	AR, ARJ
4A3	Pinion & Shaft	AR, ARJ
4A5	Spacer	AR, ARJ
LOW SPEED SHAFT ASSEMBLY		
5A	Shaft Assembly (Inc. Ref. No. 5A1 thru 5A7)	AR, ARJ
5A1	Bearing	AR, ARJ
5A2	Bearing	AR, ARJ
5A3	Gear	AR, ARJ
5A4	Shaft	AR, ARJ
5A6	Spacer (Size 405 only)	ARJ
5A7	Spacer	AR,

TABLE 2 — Oil Seals/Falk™ Part Numbers

DRIVE SIZE	Reference No. & Type									
	32		34		42		44		47	49
	AR/ARJ	AR/ARJ	AR	ARJ	AR	ARJ	AR	ARJ	ARJ	ARJ
405	913010	913011	913000	912816	913001	912767	912816	912833		
425	913018	912946	913016	912767	913017	912827	2913531	912767		
445	912948	912949	913004	912578	913005	912580	912672	912578		
465	912948	912949	913023	912580	913024	912550	912580	912940		
485	912991	912992	2913169	912550	2913170	912808	912550	2913168		
505	913012	913013	913025	2918235	912769	912808	2918235	912808		
535	913012	913013	2918393	2900932	2903222	912842	2900932	2913542		
555	913012	913013	912550	912902	913034	912903	912902	912903		

TABLE 3 — Bearings/Falk™ Part Numbers

DRIVE SIZE	Reference No. & Type								
	1A3-1 & 1A3-2		2A1	2A2	3A1	3A2	4A1 & 4A2	5A1 & 5A2	5A1 & 5A2
	AR/ARJ	AR/ARJ	AR/ARJ	AR/ARJ	AR/ARJ	AR/ARJ	AR	ARJ	
405	921896	921629 ¹	921629	921809	921809	921899	921674	921331	
425	921892	921878	921878	921895 ⁶	921895 ⁶	921552	921881	921759	
445	921629	921301 ²	921301	921678	921899 ⁷	921443	921439	2912892	
465	921878	921855 ³	921855	921443	921551 ⁸	921541	2912611	2912802	
485	921301	921895 ⁴	921895	921541	921459 ⁹	921470	921788	2913166	
505	921895	921678 ¹¹	921678	921541	921541 ¹²	921481	921791	2917472	
535	921895	921552	921552	921470	921470	921901	2918718 ⁵	2918635	
555	921895	921541 ¹⁰	921541	921481	921481	2918894	2918739	2918743	

¹ Use 921888 for ratios 396.0 thru 431.1.

² Use 921319 for ratios 401.5 thru 429.8.

³ Use 921856 for ratios 365.8 thru 428.6.

⁴ Use 921734 for ratios 391.7 thru 426.3.

⁵ Use 921794 for Reference No. 5A2.

⁶ Use 921494 for ratios 229.8 and 340.9.

⁷ Use 921678 for ratios 113.4 and 123.0.

⁸ Use 921443 for ratios 112.1 and 129.4.

⁹ Use 921541 for ratios 116.0 thru 135.5.

¹⁰ Use 921486 for ratios 403.6 and 439.3.

¹¹ Use 921899 for ratio 407.2.

¹² Use 921459 for ratios 113.4, 145.0, 216.1, 251.1 and 313.9 thru 407.2.

TABLE 4 — Seal Manufacturer's Part Numbers

Falk™ Part No.	Manufacturer's No.
0912550	CRWH1-115021
0912578	HDS5-91135
0912580	JM/9830LPD
0912672	CRP90006
0912767	CRWH77540
0912769	CR92536
0912808	HDS1-1300570
0912816	CR70016
0912827	CRWH85009
0912833	CRWH70052
0912842	JM10516LUPHL15 ▲
0912902	CR1500240
0912903	CR1500380
0912940	JM/17846LDS
0912946	CRW17558(V)
0912948	CRW19823(V)
0912949	CRWH20002(V)
0912991	CR22363
0912992	CRWH22449(V)
0913000	CRWH52447(V)
0913001	CRWH52489(V)
0913004	CRWH64998(V)
0913005	JM/8950LUP-H5/L16(V)
0913010	CRW14861(V)
0913011	CRW14940(V)
0913012	JM/5961LUP-H5/L16(V)
0913013	CRWH29958(V)
0913016	CRWH57552(V)
0913017	CRWH57523(V)
0913018	CRW17379(V)
0913023	JM/12094LUP
0913024	JM/8951LUP
0913025	NATIONAL416257
0913034	JM/10509H1L5LUP
2900932	CR1350250HSD1
2903222	CR105051
2913168	CRWH1115041
2913169	CRWH80010
2913170	CRWHI80037
2913531	CRSH77530
2913542	CR1350542HDS-Z
2918235	CR1300250HDS1
2918393	CR1050240HDSI

▲ Manufacturer is J.M. Clipper.

TABLE 5 — Bearing Manufacturer's Part Numbers

Falk™ Part No.	Manufacturer's No.
921301	TIM623/612
921319	TIM619/612
921331	TIMHM237545/HM237510
921439	TIMHM237535/HM237510
921443	TIMHH221449/HH221410
921459	TIMHH224335/HH224310
921470	TIMHH228349/HH228310
921481	TIMHH234048/HH234010
921486	TIMHH224332/HH224310
921494	TIMH715336/H715311
921541	TIMHH224346/HH224310
921551	TIMHH221430/HH221410
921552	TIMHH421246C/HH421210
921629	TIM3780/3720
921674	TIM95528/95925
921678	TIM850/832
921734	TIMH715341/H715311
921759	TIMJHM840449/JHM840410
921788	TIMH242649/H242610
921791	TIMH247549/H247510
921794	TIMH852849/H852810
921809	TIM5583/5535
921855	TIM5584/5535
921856	TIM5578/5535
921878	TIM529X/522
921881	TIM99575/99100
921888	TIM3782/3720
921892	TIM3586/3520
921895	TIMH715346/H715311
921896	TIMM802048/M802011
921899	TIM843/832
921901	TIMHH437549/HH437510
2912611	TIMH239649/H239610
2912802	TIMEE275100/275155
2912892	TIMEE130902/131400
2913166	TIMEE722115/722185
2917472	TIMHM261049/261010
2918635	TIMHM262749/HM262710
2918718	TIMEE295110/295193
2918739	TIMHH258248/HH258210
2918743	TIMHM266446/HM266410
2918894	TINH247535/H247510