

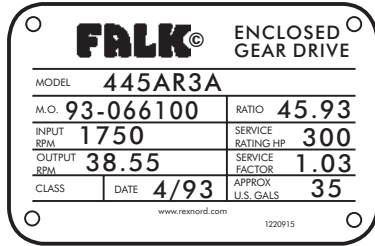
Introduction

This literature applies to Type AR & ARJ standard triple reduction gear drives with horizontal axis high and low speed shafts; and with ratings, speeds, ratios, and dimensions as catalogued in current Falk™ selection guides. The low speed shaft may be configured left or right when viewing the high speed end. Refer to Rexnord for all specials and modifications.

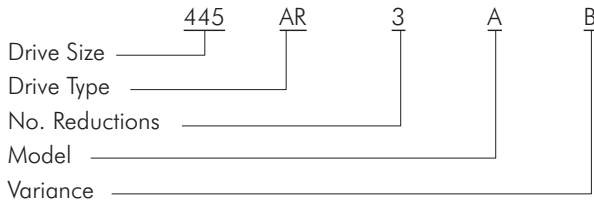
- IDENTIFY DRIVE** — Give complete data shown on drive nameplate. Also, give reference numbers, Falk™ part numbers, and name of parts required. Drawings and reference numbers are representative of all sizes and the actual parts may not agree in exact detail for each drive size. Complete nameplate data and parts reference number will assure receipt of correct parts.

The numerical designation stamped on the nameplate completely identifies all parts used in the drive. All drives with exactly the same nameplate markings have interchangeable rotating elements.

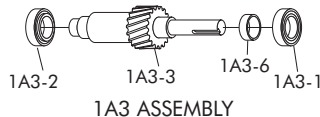
Sample Nameplate



Drive Identification



- IDENTIFY INDIVIDUAL PARTS** — Use exploded view on Page 2 to determine Ref. No. of required parts.



Ref. No.	Part Description
1A3-1	Bearing
1A3-2	Bearing
1A3-3	Pinion & Shaft
1A3-6	Spacer

NOTE: It is recommended that the shaft seals be replaced whenever it becomes necessary to disturb a seal in the process of disassembling a drive. New Shim-gaskets are recommended to prevent oil leakage and in some cases necessary to adjust internal running clearances. Shim-gaskets are available only in kits; see Ref. No. 100.

PINION-SHAFT-BEARING ASSEMBLIES — With today's production procedures, Rexnord can normally furnish a total rotating assembly more economically than if a customer purchases individual parts, disassembles the old parts, and reassembles using some new and some old parts. Falk™ replacement assemblies also reduce down time and always consist of all new parts.

FASTENERS — Fasteners are sold in sets for a specific item, i.e. four for an end cover, eight for a low speed seal cage, etc. Fasteners describe cap screws, bolts, studs, nuts, and lock washers as required.

RATIO CHANGE — Refer complete information to Factory.

SHAFT COUPLINGS — Refer to coupling parts guide and price list.

- HOW TO USE THIS GUIDE** — Use the Part Ref. No. (Step 2) and the drive Model No. (Step 1) to determine the part description and use this information to order the required parts.

- ORDER REPLACEMENT** — Place your order with your local Rexnord Account Executive or Distributor. If you need assistance call the number below.

Bearing & Seal Identification

Refer to the exploded views on Page 2 to identify the bearings and oil seals by the parts list Reference Number. Then refer to Tables 2 thru 5, Pages 3 and 4, to determine the Manufacturer and Manufacturer's part number.

Corrosion Protection & Storage

CAUTION: Follow guidelines below to avoid damage to parts.

- For domestic or indoor storage, Factory provides standard 24 month protection as boxed or optional 24 month protection for individual parts.
- For export or outdoor storage, Factory provides optional 18 month protection.

CAUTION: This protection does not cover exposure to elements such as standing water, etc.

Parts Diagram

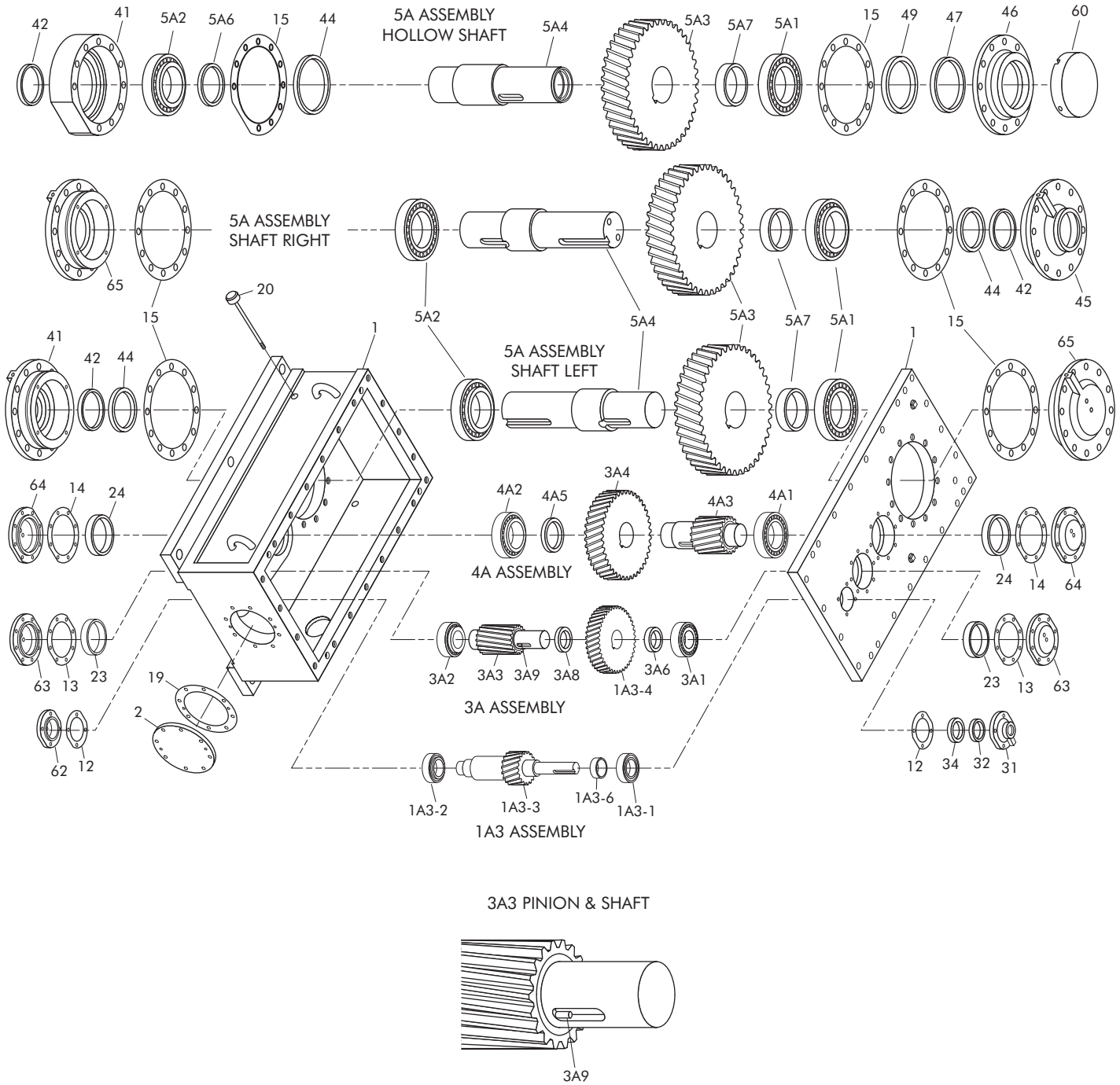


TABLE 1 — Parts List

Ref. No.	Part Description	Drive Type
1	Housing - Cover & Base	AR, ARJ
2	End Cover	AR, ARJ
12	Shim - Gasket	AR, ARJ
13	Shim - Gasket	AR, ARJ
14	Shim - Gasket	AR, ARJ
15	Shim - Gasket	AR, ARJ
19	Shim - Gasket	AR, ARJ
20	Dipstick	AR, ARJ
23	Spacer	AR, ARJ
24	Spacer	AR, ARJ
31	Seal Cage	AR, ARJ
32	Seal	AR, ARJ
34	Seal	AR, ARJ
41	Bearing/Seal Cage	AR, ARJ
42	Seal	AR, ARJ
44	Seal	AR, ARJ
45	Bearing/Seal Cage	AR
46	Seal Cage	ARJ
47	Seal	ARJ
49	Seal	ARJ
60	Shaft Cover	ARJ
62	Shaft Cover	AR, ARJ
63	Shaft Cover	AR, ARJ
64	Shaft Cover	AR, ARJ
65	Bearing Cage/Cover	AR
100	Shim - Gasket Kit (Inc. Ref. Nos. 12, 13, 14, 15 & 19)	AR, ARJ
HIGH SPEED SHAFT ASSEMBLY		
1A3	Shaft Assembly (Inc. Ref. Nos. 1A3-1, 1A3-2, 1A3-3, 1A3-6 & 1A3-7)	AR, ARJ
1A3-1	Bearing	AR, ARJ
1A3-2	Bearing	AR, ARJ
1A3-3	Pinion & Shaft	AR, ARJ
1A3-4	Gear (Included with Ref. No. 4A)	AR, ARJ
1A3-6	Spacer	AR, ARJ
INTERMEDIATE SHAFT ASSEMBLY		
3A	Shaft Assembly (Inc. Ref. Nos. 3A1 thru 3A9 & 1A3-4)	AR, ARJ
3A1	Bearing	AR, ARJ
3A2	Bearing	AR, ARJ
3A3	Pinion & Shaft	AR, ARJ
3A4	Gear (Included with Ref. No. 4A)	AR, ARJ
3A6	Spacer	AR, ARJ
3A8	Spacer (Sizes 405 & 425)	AR, ARJ
3A9	Spring Pin (Size 405)	AR, ARJ
LOW SPEED PINION ASSEMBLY		
4A	Shaft Assembly (Inc. Ref. Nos. 4A1 thru 4A5 & 3A-4)	AR, ARJ
4A1	Bearing	AR, ARJ
4A2	Bearing	AR, ARJ
4A3	Pinion & Shaft	AR, ARJ
4A5	Spacer	AR, ARJ
LOW SPEED SHAFT ASSEMBLY		
5A	Shaft Assembly (Inc. Ref. No. 5A1 thru 5A7)	AR, ARJ
5A1	Bearing	AR, ARJ
5A2	Bearing	AR, ARJ
5A3	Gear	AR, ARJ
5A4	Shaft	AR, ARJ
5A6	Spacer (Size 405 only)	ARJ
5A7	Spacer	AR, ARJ

TABLE 2 — Oil Seals/Falk™ Part Numbers

DRIVE SIZE	Reference No. & Type							
	32	34	42		44		47	49
	AR/ARJ	AR/ARJ	AR	ARJ	AR	ARJ	ARJ	ARJ
405	912948	912949	913000	912816	913001	912767	912816	912833
425	912948	912949	913016	912767	913017	912827	2913531	912767
445	912991	912992	913004	912578	913005	912580	912672	912578
465	912993	912994	913023	912580	913024	912550	912580	912940
485	913012	913013	2913169	912550	2913170	912808	912550	2913168
505	912995	912996	913025	2918235	912769	912808	2918235	912808
535	912997	912998	2918393	2900932	2903222	912842	2900932	2913542
555	913014	913015	912550	912902	913034	912903	912902	912903

TABLE 3 — Bearings/Falk™ Part Numbers

DRIVE SIZE	Reference No. & Type					
	1A3-1/1A3-2	3A1	3A2	4A1/4A2	5A1/5A2	5A1/5A2
	AR/ARJ	AR/ARJ	AR/ARJ	AR/ARJ	AR	ARJ
405	921629	921809	921809	921899	921674	921331
425	921878	921895 ¹	921895 ¹	921552	921881	921759
445	921301	921301	921678 ²	921443	921439	2912892
465	921855	921443	921443 ³	921541	2912611	2912802
485	921895	921541	921541 ⁴	921470	921788	2913166
505	921678	921541	921541 ⁵	921505 ⁶	921791	2917472
535	921443 ⁷	921470	921470	921901	2918718 ⁸	2918635
555	921541	921481	921481	921906	2918739	2918743

TABLE 4 — Seal Manufacturer's Part Numbers

Falk™ Part No.	Manufacturer's No.
912550	CRWH1-115021
912578	HDS5-91135
912580	JM/9830LPD
912672	CRP90006
912767	CRWH77540
912769	CR92536
912808	HDS1-1300570
912816	CR70016
912827	CRWH85009
912833	CRWH70052
912842	JM10516LUPHL15 ▲
912902	CR1500240
912903	CR1500380
912940	JM/17846LDS
912948	CRW19823(V)
912949	CRWH20002(V)
912991	CR22363
912992	CRWH22449(V)
912993	CRWH24914(V)
912994	CRWH24984(V)
912995	CRWH34892(V)
912996	JM/8821LPD-H5/L16(V)
912997	CRWH39932(V)
912998	CRWH39996(V)
913000	CRWH52447(V)
913001	CRWH52489(V)
913004	CRWH64998(V)
913005	JM/8950LUP-H5/L16(V)
913012	JM/5961LUP-H5/L16(V)
913013	CRWH29958(V)
913014	CRWH44973(V)
913015	JM/11709LUP-H5/L16(V)
913016	CRWH57522(V)
913017	CRWH57523(V)
913023	JM/12094LUP
913024	JM/8951LUP
913025	NATIONAL416257
913034	JM/10509H1L5LUP
2900932	CR1350250HSD1
2903222	CRP5051
2913168	CRWH115041
2913169	CRWH80010
2913170	CRWH80037
2913531	CRSH77530
2913542	CR1350542HDS-Z
2918235	CR1300250HDS1
2918393	CR1050240HDSI

▲ Manufacturer is J.M. Clipper.

TABLE 5 — Bearing Manufacturer's Part Numbers

Falk™ Part No.	Manufacturer's No.
921301	TIM623/612
921331	TIMHM237545/HM237510
921439	TIMHM237535/HM237510
921443	TIMHH221449/HH221410
921459	TIMHH224335/HH224310
921470	TIMHH228349/HH228310
921481	TIMHH234048/HH234010
921494	TIMH715336/H715311
921505	TIM659/652B
921541	TIMHH224346/HH224310
921551	TIMHH221430/HH221410
921552	TIMHH421246C/HH421210
921629	TIM3780/3720
921674	TIM95528/95925
921678	TIM850/832
921741	TIMHH221449A/HH221410
921759	TIMJHM840449/JHM840410
921788	TIMH242649/H242610
921791	TIMH247549/H247510
921794	TIMH852849/H852810
921809	TIM5583/5535
921855	TIM5584/5535
921878	TIM529X/522
921881	TIM99575/99100
921895	TIMH715346/H715311
921899	TIM843/832
921901	TIMHH437549/HH437510
921906	TIMNP180202/NP513983
2912611	TIMH239649/H239610
2912802	TIMEE275100/275155
2912892	TIMEE130902/131400
2913166	TIMEE722115/722185
2917472	TIMHM261049/261010
2918635	TIMHM262749/HM262710
2918718	TIMEE295110/295193
2918739	TIMHH258248/HH258210
2918743	TIMHM266446/HM266410