

Introduction

This literature applies to Model A, B, C and D standard gear drives with ratings, speeds, ratios, and dimensions as catalogued in current Falk™ selection guides. Type "AXV" drives have vertical axis high and low speed shafts. The low speed shafts may be configured up (U) or down (D). Type "AXVQ" drives have a vertical high speed shaft and a vertical hollow low speed shaft. Refer to Rexnord for all specials and modifications.

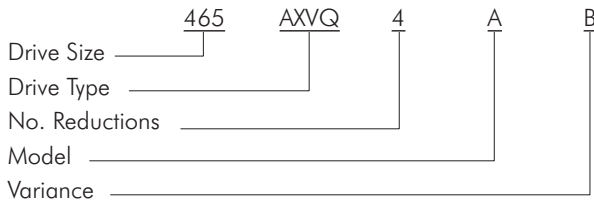
- IDENTIFY DRIVE** — Give complete data shown on drive nameplate. Also, give reference numbers, Falk™ part numbers, and name of parts required. Drawings and reference numbers are representative of all sizes and the actual parts may not agree in exact detail for each drive size. Complete nameplate data and parts reference number will assure receipt of correct parts.

The numerical designation stamped on the nameplate completely identifies all parts used in the drive. All drives with exactly the same nameplate markings have interchangeable rotating elements.

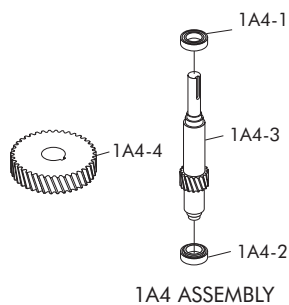
Sample Nameplate

FALK ®		ENCLOSED GEAR DRIVE	
MODEL 465AXVQ4A			
M.O. 93-066100		RATIO 129.4	
INPUT RPM 1750	SERVICE RATING HP 100		
OUTPUT RPM 13.5	SERVICE FACTOR 1.65		
CLASS	DATE 8/89	APPROX U.S. GALS 30	
<small>www.rexnord.com</small>		<small>1220915</small>	

Drive Identification



- IDENTIFY INDIVIDUAL PARTS** — Use exploded view on Page 2 to determine Ref. No. of required parts.



Ref. No.	Part Description
1A4-1	Bearing
1A4-2	Bearing
1A4-3	Pinion & Shaft
1A4-4	Gear

NOTE: It is recommended that the shaft seals be replaced whenever it becomes necessary to disturb a seal in the process of disassembling a drive. New Shim-gaskets are recommended to prevent oil leakage and in some cases necessary to adjust internal running clearances. Shim-gaskets are available only in kits; see Ref. No. 100.

PINION-SHAFT-BEARING ASSEMBLIES — With today's production procedures, Rexnord can normally furnish a total rotating assembly more economically than if a customer purchases individual parts, disassembles the old parts, and reassembles using some new and some old parts. Falk™ replacement assemblies also reduce down time and always consist of all new parts.

FASTENERS — Fasteners are sold in sets for a specific item, i.e. four for an end cover, eight for a low speed seal cage, etc. Fasteners describe cap screws, bolts, studs, nuts, and lock washers as required.

RATIO CHANGE — Refer complete information to Factory.

SHAFT COUPLINGS — Refer to coupling parts guide and price list.

- HOW TO USE THIS GUIDE** — Use the Part Ref. No. (Step 2) and the drive Model No. (Step 1) to determine the part description and use this information to order the required parts.

- ORDER REPLACEMENT** — Place your order with your local Rexnord Account Executive or Distributor. If you need assistance call the number below.

Bearing & Seal Identification

Refer to the exploded views on Page 2 to identify the bearings and oil seals by the parts list Reference Number. Then refer to Tables 2 thru 5, Pages 3 and 4, to determine the Manufacturer and Manufacturer's part number.

Corrosion Protection & Storage

CAUTION: Follow guidelines below to avoid damage to parts.

- For domestic or indoor storage, Factory provides standard 24 month protection as boxed or optional 24 month protection for individual parts.
- For export or outdoor storage, Factory provides optional 18 month protection.

CAUTION: This protection does not cover exposure to elements such as standing water, etc.

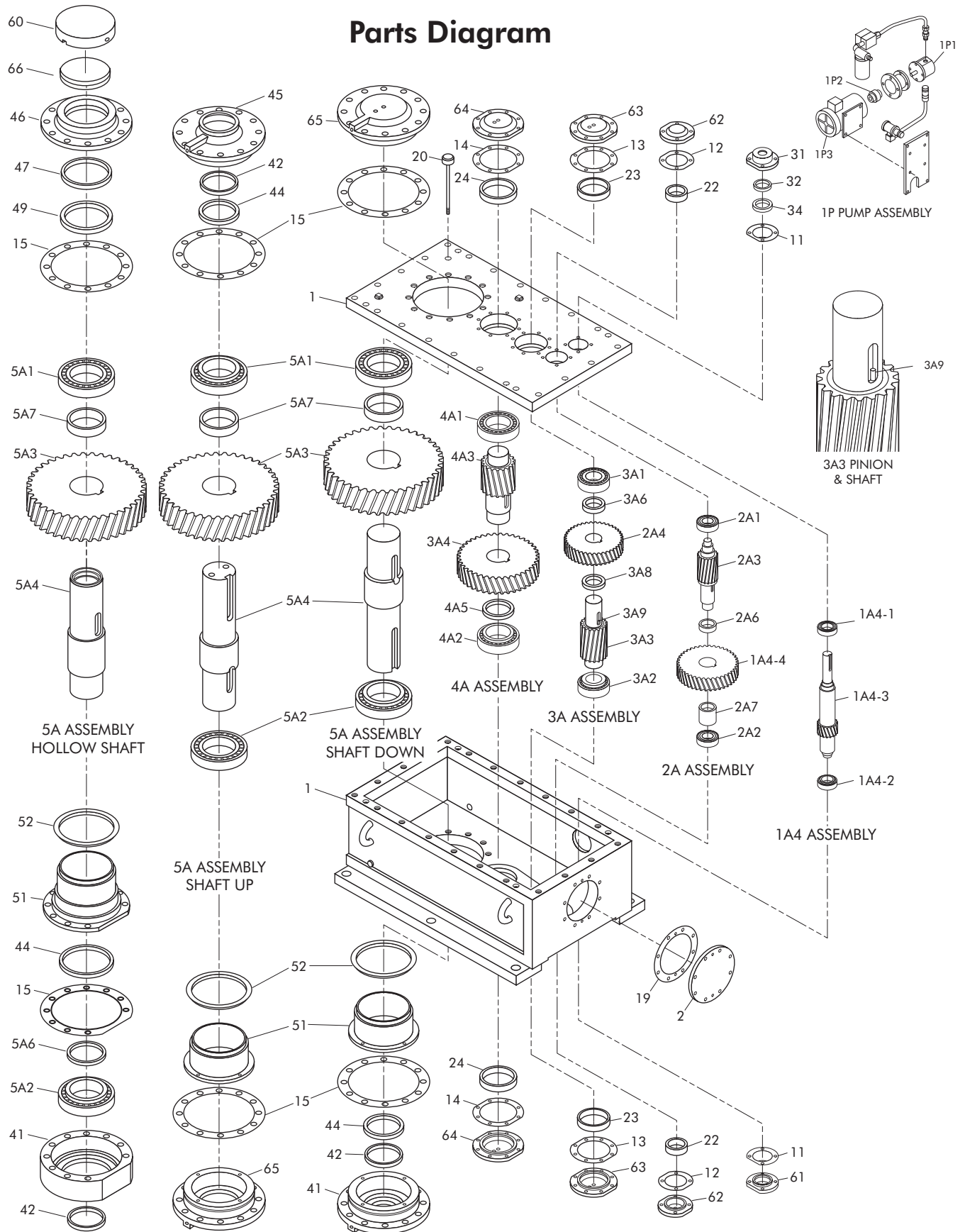


TABLE 1 — Parts List

1	Housing-Cover & Base	AXV, AXVQ
2	End Cover	AXV, AXVQ
11	Shim-Gasket	AXV, AXVQ
12	Shim-Gasket	AXV, AXVQ
13	Shim-Gasket	AXV, AXVQ
14	Shim-Gasket	AXV, AXVQ
15	Shim-Gasket	AXV, AXVQ
19	Shim-Gasket	AXV, AXVQ
20	Dipstick	AXV, AXVQ
22	Spacer	AXV, AXVQ
23	Spacer	AXV, AXVQ
24	Spacer	AXV, AXVQ
31	Seal Cage	AXV, AXVQ
32	Seal	AXV, AXVQ
34	Seal	AXV, AXVQ
41	Bearing/Seal Cage	AXV, AXVQ
42	Seal	AXV, AXVQ
44	Seal	AXV, AXVQ
45	Bearing/Seal Cage	AXV
46	Seal Cage	AXVQ
47	Seal	AXVQ
49	Seal	AXVQ
51	Oil Dam	AXV, AXVQ
52	Seal	AXV, AXVQ
60	Shaft Cover	AXVQ
62	Shaft Cover	AXV, AXVQ
63	Shaft Cover	AXV, AXVQ
64	Shaft Cover	AXV, AXVQ
65	Bearing/Seal Cage	AXV
66	Thrust Plate	AXVQ
100	Shim-Gasket Kit (Inc. Ref. Nos. 12, 13, 14, 15 & 19)	AXV, AXVQ
HIGH SPEED SHAFT ASSEMBLY		
1A4	Shaft Assembly (Inc. Ref. Nos. 1A3-1, 1A3-2, 1A3-3 & 1A3-6)	AXV, AXVQ
1A4-1	Bearing	AXV, AXVQ
1A4-2	Bearing	AXV, AXVQ
1A4-3	Pinion & Shaft	AXV, AXVQ
1A4-4	Gear (Inc. with Ref 4A)	AXV, AXVQ
EXTERNAL LUBRICATION PUMP		
1P	Pump Assembly	AXV, AXVQ
1P1	Pump	AXV, AXVQ
1P2	Coupling	AXV, AXVQ
1P3	Motor	AXV, AXVQ
1ST INTERMEDIATE SHAFT ASSEMBLY		
2A	Shaft Assembly (Inc. Ref. Nos. 2A1 thru 2A7 & 1A4-4)	AXV, AXVQ
2A1	Bearing	AXV, AXVQ
2A2	Bearing	AXV, AXVQ
2A3	Pinion & Shaft	AXV, AXVQ
2A4	Gear (Included with Ref. No. 3A)	AXV, AXVQ
2A6	Spacer (Sizes 425, 445 & 465)	AXV, AXVQ
2A7	Spacer	AXV, AXVQ
INTERMEDIATE SHAFT ASSEMBLY		
3A	Shaft Assembly (Inc. Ref. Nos. 3A1 thru 3A9 & 1A3-4)	AXV, AXVQ
3A1	Bearing	AXV, AXVQ
3A2	Bearing	AXV, AXVQ
3A3	Pinion & Shaft	AXV, AXVQ
3A4	Gear (Inc. with Ref. No. 4A)	AXV, AXVQ
3A6	Spacer	AXV, AXVQ
3A8	Spacer	AXV, AXVQ
3A9	Spring Pin (Size 405 only)	AXV, AXVQ
LOW SPEED PINION ASSEMBLY		
4A	Shaft Assembly (Inc. Ref. Nos. 4A1 thru 4A5 & 1A2-4)	AXV, AXVQ
4A1	Bearing	AXV, AXVQ
4A2	Bearing	AXV, AXVQ
4A3	Pinion & Shaft	AXV, AXVQ
4A5	Spacer	AXV, AXVQ

(Continued in next column)

TABLE 1 — Parts List (Continued)

Ref. No.	Part Description	Drive Type
LOW SPEED SHAFT ASSEMBLY		
5A	Shaft Assembly (Inc. Ref. Nos. 5A1 thru 5A7)	AXV, AXVQ
5A1	Bearing	AXV, AXVQ
5A2	Bearing	AXV, AXVQ
5A3	Gear	AXV, AXVQ
5A4	Shaft	AXV, AXVQ
5A6	Spacer (Size 405 only)	AXVQ
5A7	Spacer	AXV, AXVQ

TABLE 2 — Oil Seals/Falk™ Part Numbers

DRIVE SIZE	Reference No. & Type													
	32		34		42		44		47		49		52	
	AXV & AXVQ	AXV & AXVQ	AXV	AXVQ	AXV	AXVQ	AXV	AXVQ	AXVQ	AXVQ	AXVQ	AXVQ	AXV & AXVQ	
405	913010	913011	913000	912816	913001	912767	912816	912833	2912858					
425	913018	912946	913016	912767	913017	912827	2913531	912767	2913534					
445	912948	912949	913004	912578	913005	912580	912672	912578	912448					
465	912948	912949	913023	912580	913024	912550	912580	912940	2912803					
485	912991	912992	2913169	912550	2913170	912808	912550	913168	2913172					
505	913012	913013	913025	912809	912769	912905	912809	2913977	2917215					
535	913012	913013	2918393	2900932	2903222	912842	2900932	2913542	2918389					
555	913012	913013	912550	912903	913034	2918744	912902	912903	2918890					

TABLE 3 — Bearings/Falk Part Numbers

DRIVE SIZE	Reference No. & Type								
	1A3-1	1A3-2	2A1	2A2	3A1	3A2	4A1/4A2	5A1/5A2 AXV	5A1/5A2 AXVQ
405	921896	921896	921629 ¹	921629	921809	921809	921899	921674	921331
425	921892	921892	921878	921878	921895 ²	921895 ²	921552	921881	921759
445	921629	921629	921301 ³	921301	921678	921678 ⁴	921443	921439	2912892
465	921878	921878	921855 ⁵	921855	921443	921443 ⁷	921541	2912611	2912802
485	921301	921301	921895 ⁸	921895	921541	921541 ⁹	921470	921788	2913166
505	921895	921895	921678 ¹⁰	921678	921541	921541 ¹¹	921481	921791	2917124
535	921895	921895	921552	921552	921470	921470	921901	2918718 ¹²	2918385
555	921895	921895	921541 ¹³	921541	921481	921481	2918894	2918739	2918740 ⁶

¹ Use 921888 for ratios 396.0 & 431.1.

² Use 921494 for ratios 229.8 & 340.9.

³ Use 921319 for ratios 401.5 thru 465.4.

⁴ Use 921899 for ratios 142.4 thru 465.4.

⁵ Use 921856 for ratios 365.8 thru 428.6.

⁶ Use 2918741 for Ref. No. 5A2.

⁷ Use 921551 for ratios 140.1 thru 428.6.

⁸ Use 921734 for ratios 391.7 thru 426.3.

⁹ Use 921459 for ratios 156.8 thru 426.3.

¹⁰ Use 921899 for ratio 407.2.

¹¹ Use 921459 for ratios 113.4, 145.0, 216.1, 251.1 & 313.9 thru 407.2.

¹² Use 921794 for Ref. No. 5A2.

¹³ Use 921486 for ratios 403.6 & 439.3

TABLE 4 — Seal Manufacturer's Part Numbers

Falk™ Part No.	Manufacturer's No.
912550	CR115021
912578	JM/16554-LUP
912580	JM/1000-9830-LPD
912672	CR90006
912767	CRWH77540
912769	CR92536
912808	CR1300570
912809	CR122580
912816	CR70016
912827	CRWH85009
912833	CR70052
912842	JM10516LUPHL15 ▲
912902	CR1500240
912903	CR1500380
912905	CR1375240
912940	NAT417020
912946	CRW17558(M)
912948	CRW19823(M)
912949	CRWH20002(M)
912991	CR22363
912992	CRWH22449(M)
913000	CRWH52447(M)
913001	CRWH52489(M)
913004	CRWH64998(M)
913005	JM/8950LUP-H5/L16(M)
913010	CRW14861(M)
913011	CRW14940(M)
913012	JM/5961LUP-H5/L16(M)
913013	CRWH29958(M)
913016	CRWH57552(M)
913017	CRWH57523(M)
913018	CRW17379(M)
913023	JM/12094LUP
913024	JM/8951LUP
913025	NATIONAL416257
913034	JM/10509H1L5LUP
2900932	CR1350250HSD1
2903222	CR105051
2912448	CR402750
2912803	CR403250
2912858	CR402202
2913168	CRWH115041
2913169	CRWH180010
2913170	CRWH180037
2913172	CR403500
2913531	CR77530
2913534	CR402500
2913542	CR1350542HDS-Z
2913977	CR1225525HDS2
2917215	CR403750
2918389	470
2918393	CR1050240HDSI
2918744	CR1625243HS52
2918890	471

▲ Manufacturer is J.M. Clipper.

TABLE 5 — Bearing Manufacturer's Part Numbers

Falk™ Part No.	Manufacturer's No.
921301	TIM623/612
921319	TIM619/612
921331	TIMHM237545/HM237510
921439	TIMHM237535/HM237510
921443	TIMHH221449/HH221410
921459	TIMHH224335/HH224310
921470	TIMHH228349/HH228310
921481	TIMHH234048/HH234010
921486	TIMHH224332/HH224310
921494	TIMH715336/H715311
921541	TIMHH224346/HH224310
921551	TIMHH221430/HH221410
921552	TIMHH421246C/HH421210
921629	TIM3780/3720
921674	TIM95528/95925
921678	TIM850/832
921734	TIMH715341/H715311
921759	TIMJHM840449/JHM840410
921788	TIMH242649/H242610
921791	TIMH247549/H247510
921794	TIMH852849/H852810
921809	TIM5583/5535
921855	TIM5584/5535
921856	TIM5578/5535
921878	TIM529X/522
921881	TIM99575/99100
921888	TIM3782/3720
921892	TIM3586/3520
921895	TIMH715346/H715311
921896	TIMM802048/M802011
921899	TIM843/832
921901	TIMHH437549/HH437510
9212611	TIMH239649/H239610
2912802	TIMEE275100/EE275155
2912892	TIMEE130902/EE131400
2913166	TIMEE722115/EE722185
2917124	TIMH859049/H859010
2918385	TIMNPR08-9386
2918718	TIMEE295110/EE295133
2918739	TIMHH258248/HH258210
2918740	TIMM268730/M268710
2918741	TIMNPR08-9500
2918894	TIMH247535/H247510