

Introduction

This literature applies to Model A, B and C standard gear drives with ratings, speeds, ratios, and dimensions as catalogued in current Falk selection guides. Refer to Rexnord for all specials and modifications.

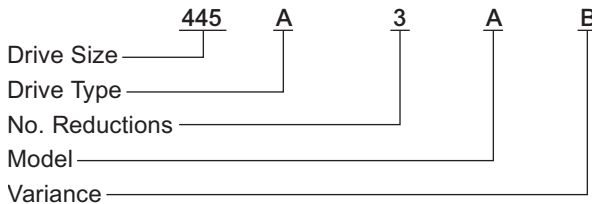
- 1. IDENTIFY DRIVE** — Give complete data shown on drive nameplate. Also, give reference numbers, Falk part numbers, and name of parts required. Drawings and reference numbers are representative of all sizes and the actual parts may not agree in exact detail for each drive size. Complete nameplate data and parts reference number will assure receipt of correct parts.

The numerical designation stamped on the nameplate completely identifies all parts used in the drive. All drives with exactly the same nameplate markings have interchangeable rotating elements.

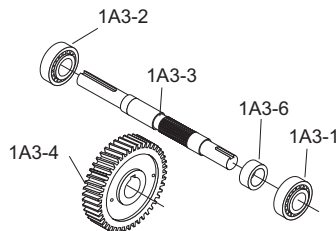
Sample Nameplate



Drive Identification



- 2. IDENTIFY INDIVIDUAL PARTS** — Use exploded view on Page 2 to determine Ref. No. of required parts.



Ref. No.	Part Description
1A3-1	Bearing
1A3-2	Bearing
1A3-3	Pinion & Shaft
1A3-4	Gear
1A3-6	Spacer

1A3 ASSEMBLY

NOTE: It is recommended that the shaft seals be replaced whenever it becomes necessary to disturb a seal in the process of disassembling a drive. New Shim-gaskets are recommended to prevent oil leakage and in some cases necessary to adjust internal running clearances. Shim-gaskets are available only in kits; see Ref. No. 100.

PINION-SHAFT-BEARING ASSEMBLIES — With today's production procedures, Rexnord can normally furnish a total rotating assembly more economically than if a customer purchases individual parts, disassembles the old parts, and reassembles using some new and some old parts. Falk replacement assemblies also reduce down time and always consist of all new parts.

FASTENERS — Fasteners are sold in sets for a specific item, i.e. four for an end cover, eight for a low speed seal cage, etc. Fasteners describe cap screws, bolts, studs, nuts, and lock washers as required.

RATIO CHANGE — Refer complete information to Factory.
SHAFT COUPLINGS — Refer to coupling parts guide and price list.

3. HOW TO USE THIS GUIDE — Use the Part Ref. No. (Step 2) and the drive Model No. (Step 1) to determine the part description and use this information to order the required parts.

4. ORDER REPLACEMENT — Place your order with your local Rexnord Account Executive or Distributor. If you need assistance call the number below.

Bearing & Seal Identification

Refer to the exploded views on Page 2 to identify the bearings and oil seals by the parts list Reference Number. Then refer to Tables 2 thru 5, Pages 3 and 4, to determine the Manufacturer and Manufacturer's part number.

Corrosion Protection & Storage

CAUTION: Follow guidelines below to avoid damage to parts.

- For domestic or indoor storage, Factory provides standard 24 month protection as boxed or optional 24 month protection for individual parts.
- For export or outdoor storage, Factory provides optional 18 month protection.

CAUTION: This protection does not cover exposure to elements such as standing water, etc.

Parts Diagram

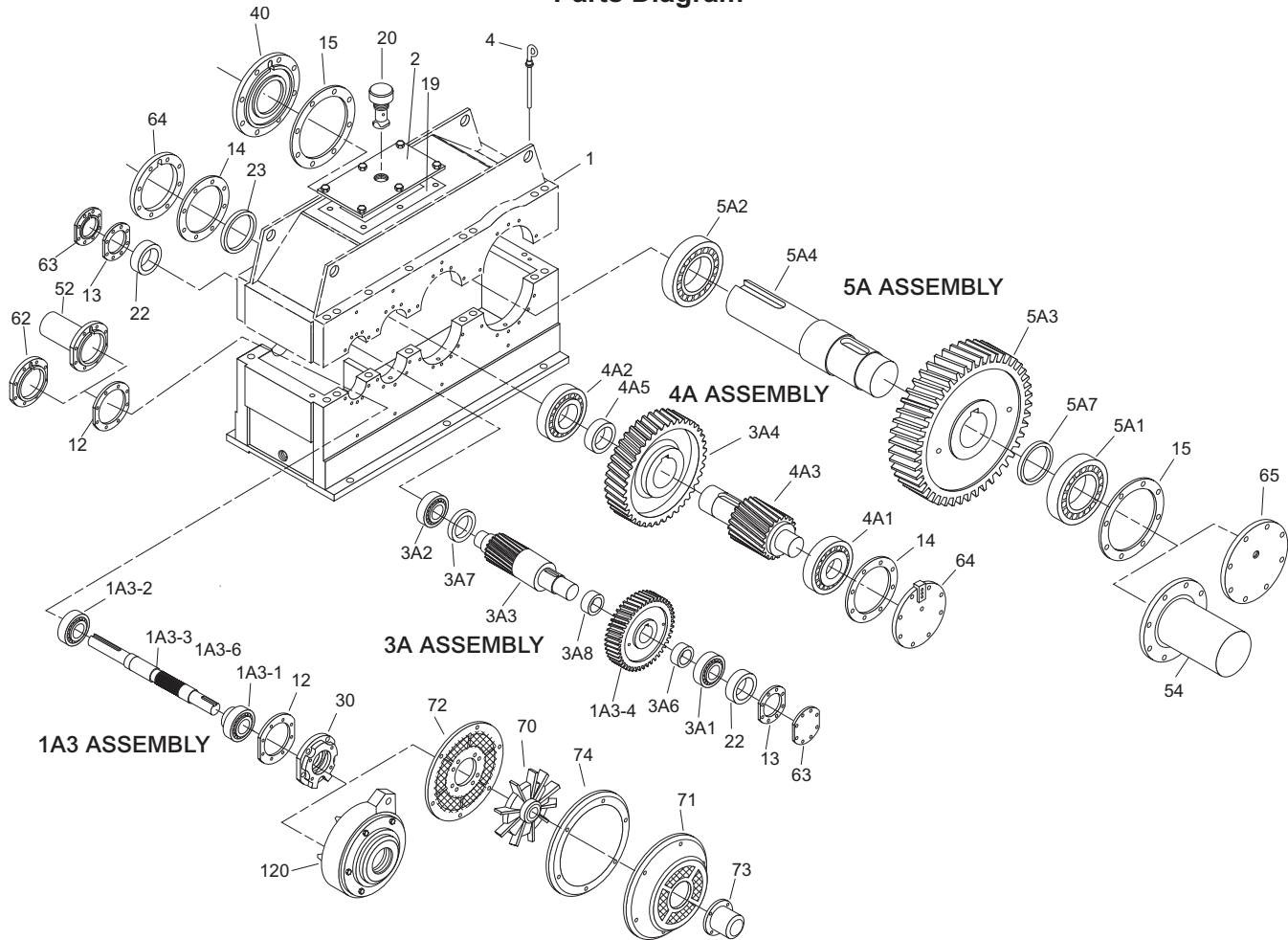
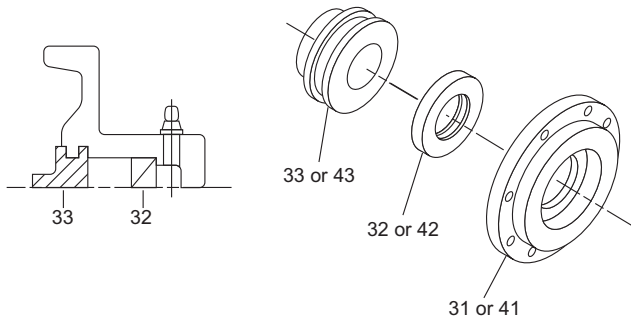
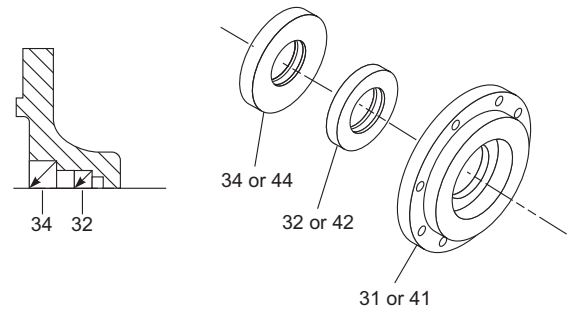


TABLE 1 — Parts List

Ref. No.	Part Description
1	Housing (Consisting of Base & Cover & all Hardware)
2	Inspection Cover
4	Dipstick
12	Shim Gasket, High Speed Shaft
13	Shim Gasket, Intermediate Shaft
14	Shim Gasket, Low Speed Pinion Shaft
15	Shim Gasket, Low Speed Shaft
19	Shim-Gasket, Inspection Cover
20	Air Vent
22	Spacer, Bearing Intermediate
23	Spacer, Bearing, Low Speed Pinion
30	High Speed Seal Cage Assembly — See Figures 4 & 5
31	Cage, Seal, High Speed
32	Seal, Exclusion, High Speed
33	Seal, Bush., High Speed
34	Seal, Oil, High Speed
40	Low Speed Seal Cage Assembly — See Figures 4 & 5
41	Cage, Seal, Low Speed
42	Seal, Exclusion, Low Speed
43	Seal, Bush., Low Speed
44	Seal, Oil, Low Speed
52	Guard, High Speed Shaft
54	Guard, Low Speed Shaft
62	Cover, End, High Speed
63	Cover, End, Intermediate
64	Cover, End, Low Speed Pinion Shaft
65	Cover, End, Low Speed

Ref. No.	Part Description
70	Fan
71	Fan Guard
72	Grill/Backplate
74	Deflector Ring
100	Shim Gasket Kit, Includes Ref. Nos.: 11, 12, 13, 14, 15 & 19
120	Backstop
1A3-1	Bearing, High Speed Shaft
1A3-2	Bearing, High Speed Shaft
1A3-3	Pinion & Shaft, High Speed
1A3-4	Gear, High Speed
1A3-6	Spacer
3A1	Bearing, Intermediate
3A2	Bearing, Intermediate
3A3	Pinion & Shaft, Intermediate
3A4	Gear, Intermediate
3A6	Spacer, Intermediate
3A7	Spacer, Intermediate
3A8	Spacer, High Speed Gear
4A1	Bearing, Low Speed Pinion Shaft
4A2	Bearing, Low Speed Pinion Shaft
4A3	Pinion & Shaft, Low Speed
4A5	Spacer, Low Speed Pinion Bearing
5A1	Bearing, Low Speed Shaft
5A2	Bearing, Low Speed Shaft
5A3	Gear, Low Speed
5A4	Shaft, Low Speed
5A7	Spacer, Bearing/Gear

NOTE: Figures 1-3 are not used for this size range or reduction.

Figure 4

Figure 5

TABLE 2 — Bearings/Falk Part Numbers

DRIVE SIZE	Reference No.							
	1A3-1	1A3-2	3A1	3A2	4A1	4A2	5A1	5A2
385	921892	921892	921856	921856	921893	921893	921414	921414
405	921629	921629	921809	921809	921899	921899	921674	921674
425	921878	921878	921895†	921895†	921552	921552	921881	921881
445	921301	921301	921678	921899‡	921443	921443	921439	921439
465	921855	921855	921443	921443 ●	921541	921541	920570	920570
485	921895	921895	921541	921541 ◆	921470	921470	2915524	2915524
505	921678	921678	921541	921459 *	921481	921481	919284	919284
525	921443★	921443★	921470	921470	921901	921901	919096	919096
545	921541	921541	921481	921481	919680	919680	920704	920704
565	921646	921646	921481	921481	919118	919118	919945	919945
585	921646	921646	921481	921481	919319	919319	919119	919119

- ★ Use 921741 for ratios 85.94 thru 105.6.
- † Use 921494 for ratio 85.24, Models A & C.
- ‡ Use 921678 for ratios 22.96 thru 33.34 & 41.07.
- Use 921551 for ratios 51.2 thru 105.6.
- ◆ Use 921459 for ratios 57.96 thru 102.0.
- * Use 921541 for ratios 70.8 & 91.83, Model C.

TABLE 3 — Oil Seals/Falk Part Numbers

DRIVE SIZE	Reference No.				
	32	33	34	42	44
385	913018	5741073	912946	913014	913015
405	912948	5741340	912949	913000	913001
425	912948	5741340	912949	913016	913017
445	912991	5741072	912992	913004	913005
465	912993	5741339	912994	913023	913024
485	913012	5741596	913013	912827	912554
505	912995	5741071	912996	913025	912769
525	912997	5741338	912998	912901	912626
545	913014	5741076	913015	912550	913034
565	913002	5742158	913003	2909092	2909091
585	913002	...	913003	2911930	912808

TABLE 4 — Seal Manufacturers' Part Numbers

Falk Part No.	Manufacturers' No.
912550	CRWH1-115021
912554	CRWH85015
912626	CRWH107551
912769	CRWHA92536
912808	CR1300570
912827	CRWH85009
912901	HSD1-1075230
912946	CRW17558(V)
912948	CRW19823(V)
912949	CRWH20002(V)
912991	CRW22363(V)
912992	CRWH22449(V)
912993	CRWH24914(V)
912994	CRWH24984(V)
912995	CRWH34892(V)
912996	JM/8821LDP-H5/L16(V)
912997	CRWH39932(V)
912998	CRWH39996(V)
913000	CRWH52447(V)
913001	CRWH52489(V)
913002	CRWH54934(V)
913003	CRWH54974(V)
913004	CRWH64998(V)
913005	JM/8950LUP-H5/L16 (V)
913012	JM/5961LUP-H5/L16
913013	CRWH29958(V)
913014	CRWH44973(V)
913015	JM11709LUPH5L16(V)
913016	CR57522(V)
913017	CR57523(V)
913018	CR17379(V)
913023	JM12094LUP
913024	JM8951LUP
913025	NAT416257
913034	JM10509H5L1LUP
2909091	JM/5891LPD
2909092	CR1225239HDS3
2911930	CR1300290

TABLE 5 — Bearing Manufacturers' Part Numbers

Falk Part No.	Manufacturers' No.
919096	SKF23156-W33/C3
919119	SKF23168-W33/C3
919284	SKF23148-W33/C3
920570	SKF23138-W33/C3
921301	TIM623/612
921414	TIM938/932
921439	TIMHM237535/HM237510
921443	TIMHH221449/HH221410
921459	TIMHH224335/HH224310
921470	TIMHH228349/HH228310
921481	TIMHH234048/HH234010
921494	TIMH715336/H715311
921541	TIMHH224346/HH224310
921551	THMHH221430/HH221410
921552	THMHH421246C/HH421210
921629	TIM3780/3720
921674	TIM95528/95925
921678	TIM850/832
921741	TIMHH221449A/HH221410
921809	TIM5583/5535
921855	TIM5584/5535
921856	TIM5578/5535
921878	TIM529X/522
921881	TIM99575/99100
921892	TIM3586/3520
921893	TIM6386/6320
921895	TIMH715346/H715311
921899	TIM843/832
921901	TIMHH437549/HH437510
2915524	SKF23144-W33/C3