

## How to Use This Manual

This manual provides detailed instructions on installation and maintenance of Orange Peel Guards, Type CFCG, Close-Coupled//Fluid Coupling Guard, Sizes 30 thru 80.

CAREFULLY FOLLOW THE INSTRUCTIONS IN THIS MANUAL AND SUPPLEMENTAL POWER TOOL MANUALS FOR OPTIMUM SAFETY AND PERFORMANCE.

## Introduction

**NOTICE:** Guards are supplied as standard with ANSI Z535.4 English Warning Labels. ISO 3864 Symbol Based Safety Labels will be supplied upon request. It is the responsibility of the end user to determine if translated safety labels or symbol based safety training are required in their facility, to ensure complete understanding of the safety alert being communicated.

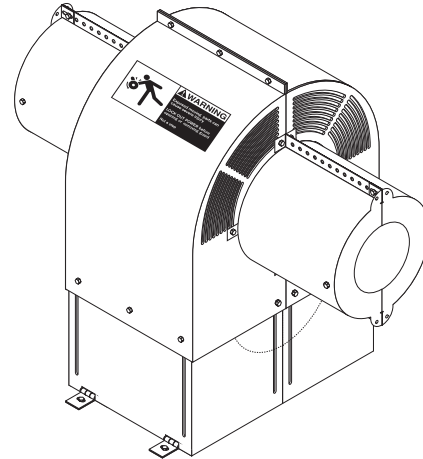
**CAUTION:** Observe all safety rules when installing or servicing guards and equipment.

**WARNING:** Exposed moving parts can cause severe injury. LOCK OUT POWER at the starting switch of prime mover and remove all external loads from equipment before opening or removing the guard. Do not use the guard as a step.

## Installation

Installation of Orange Peel Rotating Shaft Guards requires standard mechanics tools, a power saw or hand saw, and a drill. These are as follows:

- Band saw, reciprocating saw, or hand saw with a blade suitable for cutting the aluminum extensions
- Electric or hand drill
- 8mm hex head sockets/socket wrench and open end wrench
- 8mm/.313" drill bit
- Torque wrench
- Tape measure
- Metal file or grinder
- Optional 3mm/.125" stainless steel pop rivets (8) and installation tool (for mechanical attachment of warning labels)

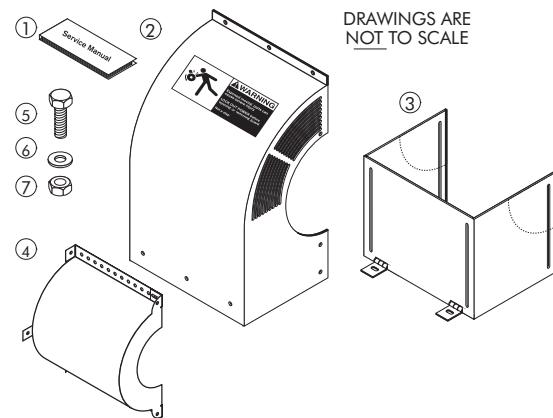


**LOCK OUT POWER** at the starting switch of the prime mover. Clean all installation surfaces. Remove parts from the shipping box and verify quantities:

- 1 – Service manual (1)
- 2 – Guard halves (2)
- 3 – Base halves (2-standard or pedestal)
- 4 – Extension with end cap (0, 1, or 2 - as required)
- 5 – Hex head bolts (39)
- 6 – Fender washers (12)
- 7 – Hex head locknuts (39)

- Foundation fasteners (4), supplied by purchaser, on Sizes 30/40/50, (6) on Sizes 60/70/80.

**Note:** Customer supplied inch stainless steel fasteners can be used in place of the standard metric stainless steel fasteners.



**TABLE 1 — Type CFCG Fasteners and Tightening Torques**

GUARD SIZE	Attachment	Fastener/Nut Size		Fender Washer Size		Tightening Torque	
		mm	Inch	mm	Inch	Nm	lb-in
30/40/50/60/70/80	All	M8-1.25 x 20-A2	.313-18 x .75-304SS	M8-8.4 x 32 x 2-A2	.313 x 1.25-304SS	27	240
		Foundation		M8 by Purchaser			

**Measurements**

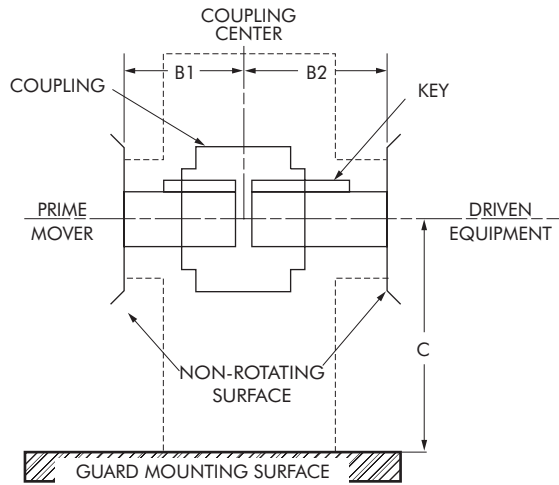
Determine and record the following trimming dimensions:

B1 \_\_\_\_\_

B2 \_\_\_\_\_

C \_\_\_\_\_ A Guard Pedestal is required if C is greater than C max.

**WARNING:** Accurate measurements are required! It is the purchaser's responsibility to limit all interface gaps to less than 6mm/.250".



**Base Adjustment, Extension Trimming, and Pre-Assembly**

The standard or pedestal base halves should be bolted to the guard halves with a distance setting of C. This can be measured from the guard center extension hole to the bottom of the base. The base knock-out will need to be removed if it protrudes into the guard extension hole area. All guard fasteners (5 per half) should be assembled with the locknuts on the guard outside, to allow for proper internal clearances. The guard face center hole must be drilled and a fastener installed. Next, trim the aluminum extension halves to their respective B1 and B2 measurements. The extension flange holes are spaced at 25mm (1.0 inch) increments. (See Figure 1.)

**CAUTION:** Be sure to trim the extensions to their mating half. These can be scribed or marked using the other extension half, to help ensure a straight cut. Be sure to double check your work. Support the extension to be trimmed. It should be held firmly for safe trimming following the sawing tool manufacturers operating instructions. Be sure to read the instructions thoroughly. After trimming, file or grind the extension edges flat and smooth. You can now bolt the respective extensions and end caps (if needed) to their mating guard halves (3 fasteners per extension half). The end cap center tab can be drilled and bolted to retain it in place (1 fastener per extension half). All guard extension fasteners should be assembled with the locknuts on the guard outside, to allow for proper internal clearances. If an extension is not used, the extension cap can be optionally bolted to the guard

half shaft opening, to reduce this opening diameter. The center tabs must be removed for this use. Finally, tighten ALL guard half fasteners to 27 Nm/240 lb-in.

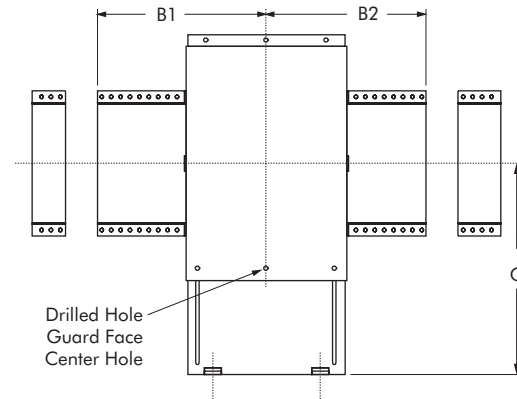


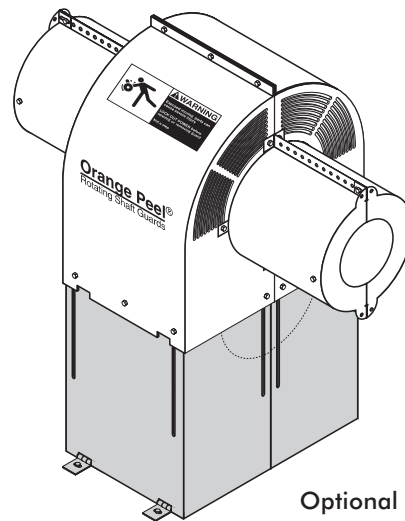
Figure 1

**Guard Installation**

**FOUNDATION ATTACHMENT** — Position the guard in its final location. Be sure the rotating members are centered in the guard and that no gaps greater than 6mm/.250" exist. In certain installations the coupling hubs will protrude into the guard extensions. Mark the foundation drilling location in the center of the hinge slotted hole. Drill or tap a hole for use with a suitable customer supplied fastener or mounting stud (see Table 1).

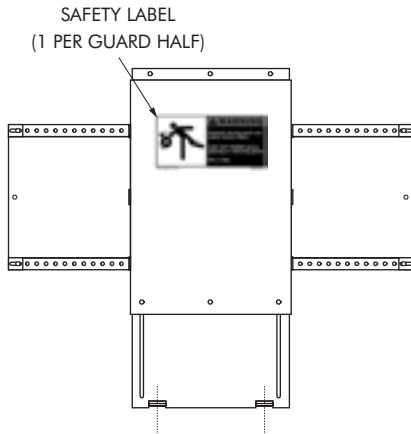
**FINAL ASSEMBLY** — Bolt the guard halves to the foundation using the appropriate customer supplied fasteners or mounting studs (see Table 1). Bring the guard halves together and bolt the halves together at the guard flange (3 fasteners) and extension end caps (4 fasteners). Finally, tighten ALL guard flange fasteners to 27Nm/240lb-in.

**OPTIONAL PEDESTAL BASE** — A pedestal base may be required for applications having a high base to centerline. The pedestal replaces the standard base and is assembled using the same assembly instructions.



Optional Pedestal

**SAFETY LABELS** — ANSI Warning Labels have been factory installed on each guard half. If an ISO label has been supplied, remove the existing label, clean the area, and install the safety label. For severe wash down or other environments requiring mechanical label attachment, pop rivets can be utilized. Use 4, 3mm/.125" medium length stainless steel pop rivets at the label corners to provide mechanical attachment.



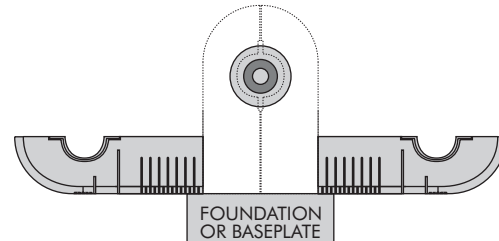
### Optional Label (ISO)



**START UP** — Prior to starting equipment, inspect the guard installation for proper rotating equipment clearances.

### Equipment Servicing

**WARNING:** *LOCK OUT POWER* at the starting switch of prime mover and remove all external loads from equipment before opening or removing the guard. To open the guard, remove the flange fasteners. Open the guard *laying it flat against the foundation*, or open until an obstruction is encountered. If a major repair is being made, *completely remove the guard from the foundation and re-install BEFORE* equipment is unlocked and started.



### Guard Maintenance

Orange Peel guards are relatively maintenance free. They may need periodic painting and are supplied with non-corrosive stainless steel hardware. Periodic visual inspection should be performed every 60 days, along with the general equipment inspections with equipment shutdown and locked out. Check the guard for any damage or component failure. Check tightening torques on all fasteners. Also, make sure that the safety labels are clean and readable. If the safety label becomes loose, damaged, or unreadable, contact Rexnord for replacement labels or guard service parts.

**TABLE 2 — Type CFCG Service Parts**

GUARD SIZE	Description	Part Number
30/40/50/60/70/80	Fastener Kit (1 Set)	2924300
	Warning Label Size 150 x 75 mm (6" x 3")	2924290