

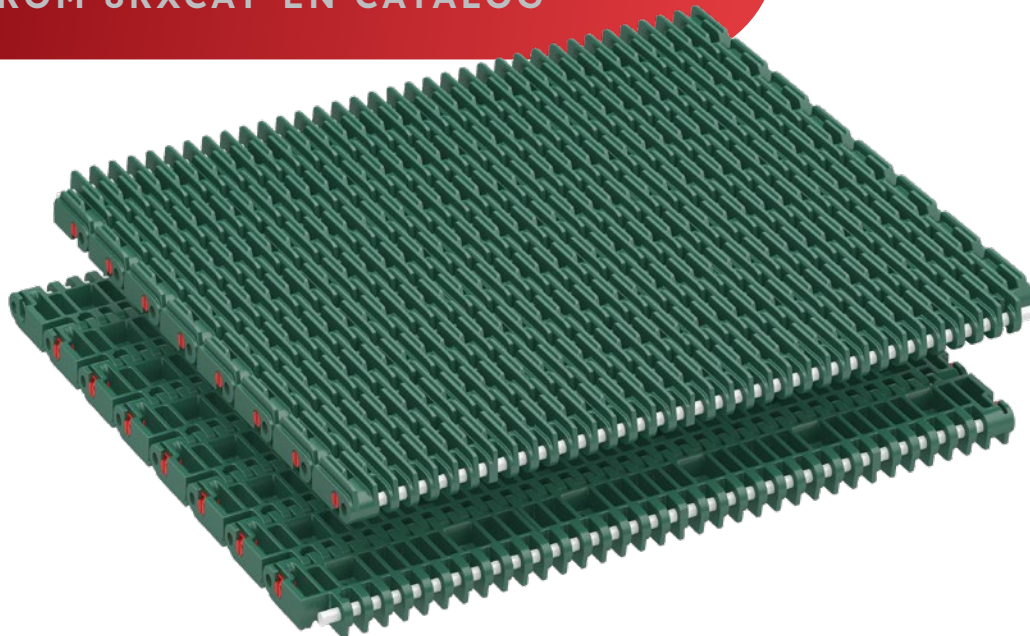


CATALOG
EXCERPT



REXNORD® 6997 SERIES MATTOP® CHAIN

EXCERPT FROM 8RXCAT-EN CATALOG



 **RegalRexnord™**

6997

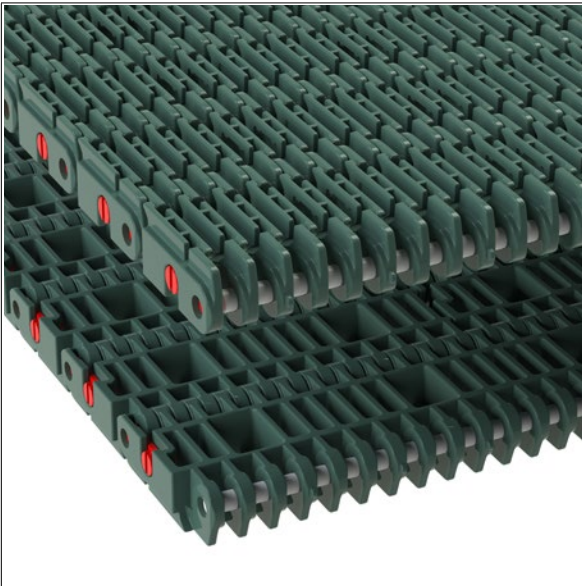
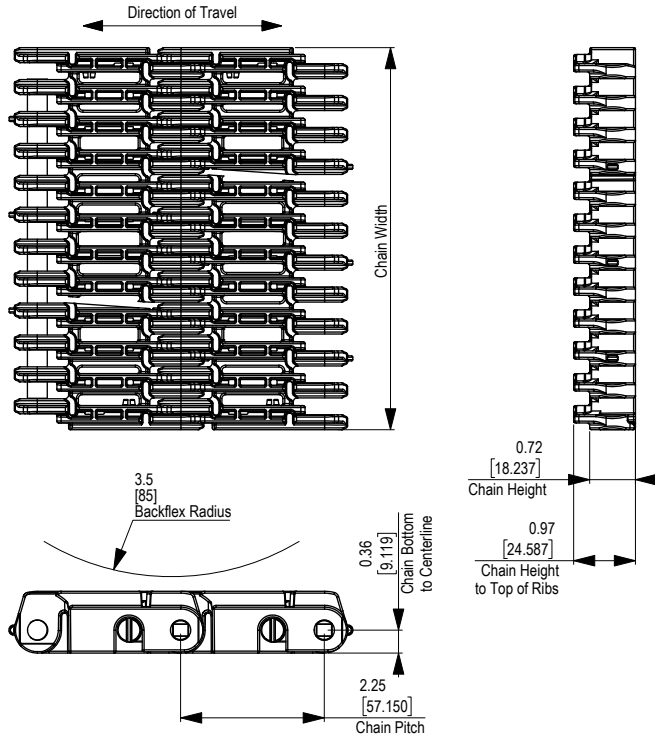


Photo shows 6997 MatTop Chain molded in Ultra Stabilized Polypropylene (USP) Material



Chain Information

Chain Capacity	Number of Sprockets			
	with Transfer Comb		without Transfer Comb	
	per ft	per m	per ft	per m
0% - 50%	4	13	2	7
50% - 100%	4	13	4	13

Available Materials

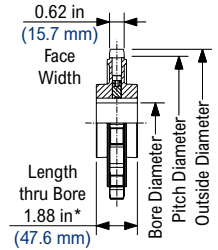
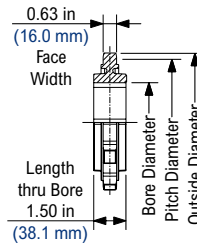
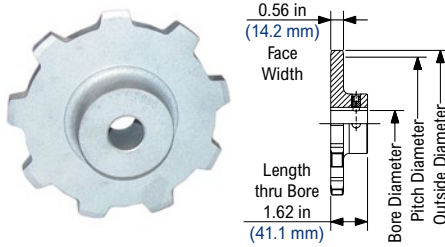
Prefix	Chain Material	Standard Pin Material	Temperature						Chain Strength		Approximate Weight		FDA Approval
			Fahrenheit			Celsius							
			min	max		min	max		lbs/ft	N/m	lbs/ft ²	kg/m ²	
Standard Materials													
USP	Ultra Stabilized Polypropylene	Polypropylene	40	220	212	4	104	100	2,700	39,393	2.20	10.74	Yes

Regulatory Information

The Food and Drug Administration (FDA) accepts certain materials for direct food contact. FDA approved material is compliant to FDA 21 CFR § 177. Rexnord and MatTop are trademarks of Regal Rexnord™ Corporation. All rights reserved.

Additional Notes

Standard widths 12 inches and up, increments of 6 in. Nonstandard widths from 5 in and up, increments of .5 in. Open area = 29%. Chain strength is listed at room temperature. For additional material information, see material portfolio in the Rexnord® TableTop® and MatTop® Products catalog [8rxCAT-en](#).



5996 Cast Iron Sprocket Information

Number of Teeth		Pitch Diameter		Outside Diameter		Bore Diameter (Shaft-Ready)								Bore Diameter (Round)				Approximate Weight	
						Round				Square				in		mm			
						in	mm	in	mm	in	mm	in	mm	min	max	min	max		
actual	effect	in	mm	in	mm	min	max	min	max	min	max	min	max	min	max	min	max	lbs	kg
9	9	6.579	167.11	6.46	164.1	1	2	-	-	-	-	-	-	1	2	-	-	4.08	1.85

Shaft-ready round bore sprockets are shipped with keyway and setscrew.

SS5996 Stainless Steel Sprocket Information

Number of Teeth		Pitch Diameter		Outside Diameter		Bore Diameter (Shaft-Ready)								Bore Diameter (Round)		Approximate Weight	
						Round				Square				in	mm	lbs	kg
						in	mm	in	mm	in	mm	in	mm	in	mm	lbs	kg
9	9	6.579	167.11	6.46	164.1	-	-	2 1/2	-	-	-	-	-	-	-	4.82	2.19
14	14	10.111	256.82	9.98	253.5	-	-	2 1/2	-	-	-	-	-	-	-	7.50	3.40

N5996 Thermoplastic Sprocket Molded in Acetal (POM) — Imperial Information

Number of Teeth		Pitch Diameter		Outside Diameter		Imperial Bore Diameter														Approximate Weight				
						Round												Square		lbs	kg			
						in	mm	in	mm	in	mm	in	mm	in	mm	in	mm	in	mm	in	mm	lbs	kg	
7	7	5.186	131.72	4.94	125.5	-	-	-	-	-	-	-	-	-	-	-	-	-	1 1/2	-	-	-	0.49	0.22
9	9	6.579	167.11	6.46	164.1	2	2 1/2	1 3/16	1 1/4	1 3/8	1 7/16	1 1/2	1 3/4	1 15/16	2	-	2 7/16	-	1 1/2	2	2 1/2	3 1/2	0.88	0.40
14	14	10.111	256.82	10.10	256.5	2	2 1/2	-	-	-	-	-	-	2	2 3/16	-	3 7/16	-	2	2 1/2	3 1/2	1.60	0.73	
17	17	12.245	311.02	12.36	313.9	-	-	-	-	-	-	-	-	-	-	-	-	-	-	2 1/2	3 1/2	1.71	0.78	

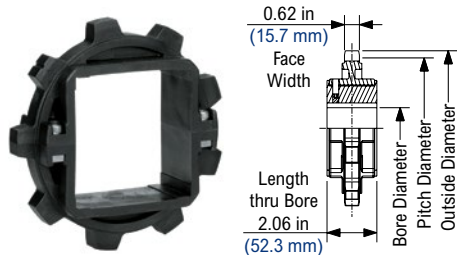
Shaft-ready round bore sprockets are shipped with keyway and setscrew. *17T sprocket length through bore dimensions is 2.25 in (57.2 mm).

N5996 Thermoplastic Sprocket Molded in Acetal (POM) — Metric Information

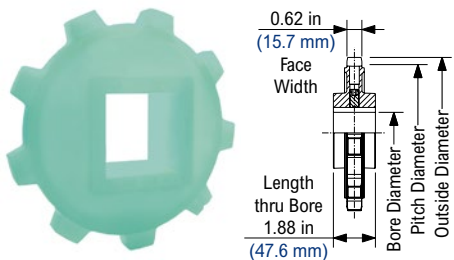
Number of Teeth		Pitch Diameter		Outside Diameter		Metric Bore Diameter								Approximate Weight			
						Hex		Square						lbs	kg		
						mm	mm	mm	mm	mm	mm	mm	mm	mm	mm	lbs	kg
7	7	5.186	131.72	4.94	125.5	-	-	40	-	-	-	-	-	-	-	0.49	0.22
9	9	6.579	167.11	6.46	164.1	-	-	40	50	65	-	-	-	-	-	0.88	0.40
14	14	10.111	256.82	10.10	256.5	50	65	40	50	65	90	-	-	-	-	1.60	0.73

Shaft-ready round bore sprockets are shipped with keyway and setscrew.

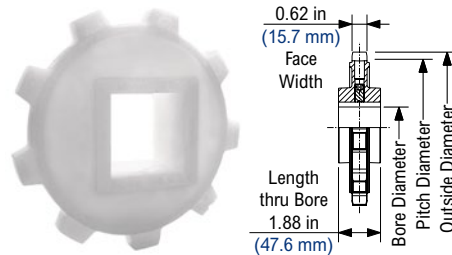
NS5996 Thermoplastic Split Sprocket



N5996 Thermoplastic Sprocket Molded in HS



N5996 Thermoplastic Sprocket Molded in PE



NS5996 Thermoplastic Split Sprocket Information

Number of Teeth		Pitch Diameter		Outside Diameter		Bore Diameter (Shaft-Ready)								Bore Diameter (Idler)				Approximate Weight	
						Round				Square				in		mm			
						in	mm	min	max	min	max	min	max	min	max	min	max		
actual	effect	in	mm	in	mm	min	max	min	max	min	max	min	max	min	max	min	max	lbs	kg
9	9	6.579	167.11	6.46	164.1	1	2 5/8	25	70	1	3 1/2*	25	90*	1	2 3/4	25	70	1.68	0.76
12	12	8.693	220.80	8.70	221.0	1	2 3/4	25	70	1	3 1/2*	25	90*	1	2 3/4	25	70	1.98	0.90
14	14	10.111	256.82	10.03	254.8	1	4 1/2	25	120	1	4 1/2**	25	120**	1	3 1/2	25	90	2.12	0.96

* The 3-1/2 in and 90 mm bores for the 9 and 12 tooth square bore sprockets are supplied as molded bores. All other bores are supplied with split bore adapters.

** The 3-1/2 in, 4-1/2 in, 90 mm and 120 mm bores for the 14 tooth square bore sprockets are supplied as molded bores. All other bores are supplied with split bore adapters.

Imperial shaft-ready round bore sprockets are shipped with keyway and setscrew. Metric shaft-ready round bore sprockets are shipped with keyway and no setscrew. Idler bores are designed to spin freely on the shaft. Similar bore sizes are available with the use of split plastic adapters.

N5996 Thermoplastic Sprocket Molded in HS (Heat Stabilized) — Imperial Information

Number of Teeth		Pitch Diameter		Outside Diameter		Imperial Bore Diameter						Approximate Weight			
						Square									
actual	effect	in	mm	in	mm	in						lbs	kg		
9	9	6.579	167.11	6.46	164.1	1 1/2 in			2 in			3 1/2 in		0.88	0.40

Shaft-ready round bore sprockets are shipped with keyway and setscrew.

N5996 Thermoplastic Sprocket Molded in HS (Heat Stabilized) — Metric Information

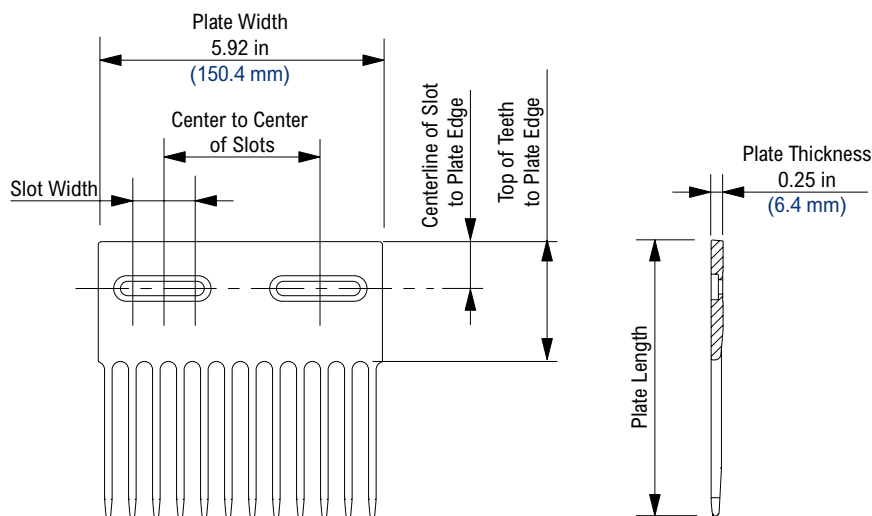
Number of Teeth		Pitch Diameter		Outside Diameter		Metric Bore Diameter						Approximate Weight	
						Square							
actual	effect	in	mm	in	mm	mm						lbs	kg
9	9	6.579	167.11	6.46	164.1	40			-			0.88	0.40
14	14	10.111	256.82	10.10	256.5	-			90			1.60	0.73

Shaft-ready round bore sprockets are shipped with keyway and setscrew.

N5996 Thermoplastic Sprocket Molded in PE (Polyethylene) — Imperial Information

Number of Teeth		Pitch Diameter		Outside Diameter		Imperial Bore Diameter						Approximate Weight		
						Round			Square					
actual	effect	in	mm	in	mm	in			in			lbs	kg	
7	7	5.186	131.72	4.94	125.5	-	-	-	1 1/2	-	-	-	0.38	0.17
9	9	6.579	167.11	6.46	164.1	1 3/16	1 1/4	2 7/16	1 1/2	2	2 1/2	-	0.69	0.31

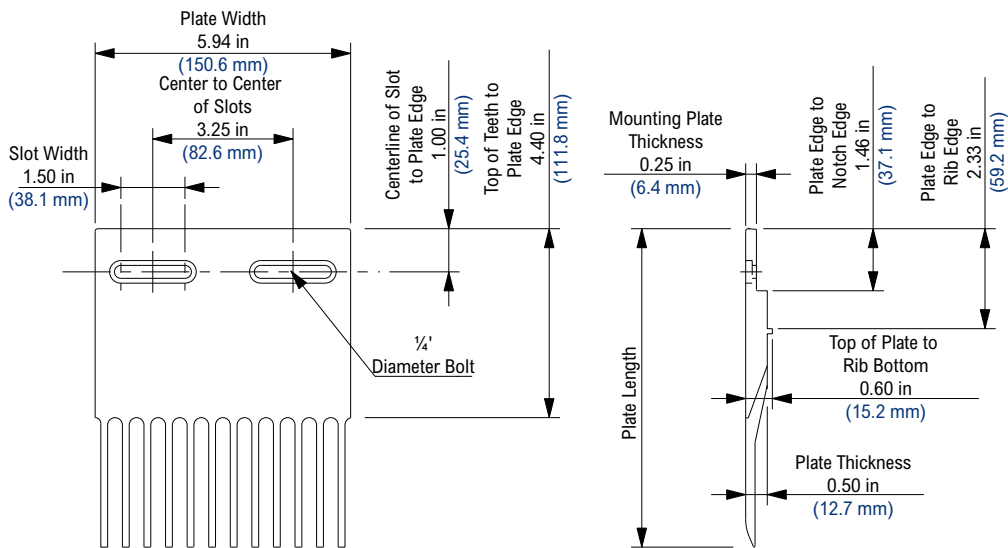
Shaft-ready round bore sprockets are shipped with keyway and setscrew.



4707/6997 Transfer Comb Kit

Transfer Comb Kit Number	Transfer Plate Part Number	Screw Part Number	Slot Caps Part Number	Plate Length		Slot Width		Centerline of Slot to Plate Edge		Top of Teeth to Plate Edge		Center to Center of Slots		Approximate Weight	
				in	mm	in	mm	in	mm	in	mm	in	mm	lbs	kg
10131495	10074648	10075965	10069160	6.18	157.0	1.50	38.1	1.00	25.4	4.40	111.8	3.25	82.6	0.48	0.22
10131813	10070598	10075965	10075964	5.75	146.1	0.75	19.1	1.00	25.4	2.24	56.9	4.00	101.6	0.24	0.11
10131834	10075632	10075965	10069160	8.50	215.9	1.50	38.1	2.00	50.8	3.50	88.9	3.25	82.6	0.28	0.13
10131838	10069161	10075965	10069160	7.50	190.5	1.50	38.1	1.00	25.4	2.50	63.5	3.25	82.6	0.30	0.14

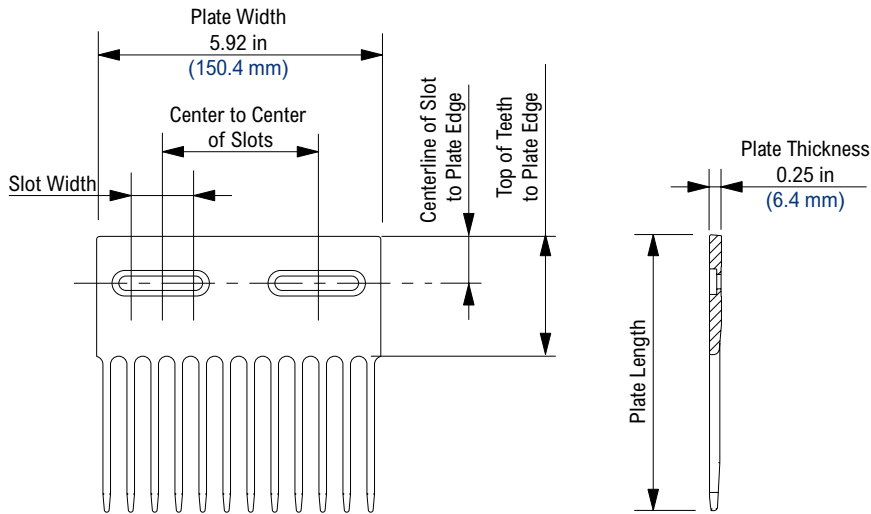
The 10070598 transfer comb is molded in white acetal. The 10075632 and 10069161 transfer combs are molded in a proprietary black internally lubricated high temperature material. Transfer comb kits are supplied with 1/4 x 20 screws and slot caps. For 4707 and 6997 chains only.



4707/6997 Heavy Duty Transfer Comb Kit

Transfer Comb Kit Number	Transfer Plate Part Number	Screw Part Number	Slot Caps Part Number	Plate Length		Slot Width		Centerline of Slot to Plate Edge		Top of Teeth to Plate Edge		Center to Center of Slots		Approximate Weight	
				in	mm	in	mm	in	mm	in	mm	in	mm	lbs	kg
10131497	10074649	10075965	10069160	7.95	201.9	1.50	38.1	1.00	25.4	4.40	111.8	3.25	82.6	0.53	0.24
10131499	10071978	10075965	10069160	7.95	201.9	1.50	38.1	1.00	25.4	4.40	111.8	3.25	82.6	0.53	0.24

Transfer combs are molded in a proprietary black internally lubricated high temperature material. Transfer comb kits are supplied with 1/4 x 20 screws and slot caps. For 4707 and 6997 chains only. The 10071978 transfer comb has the bottom rib removed.



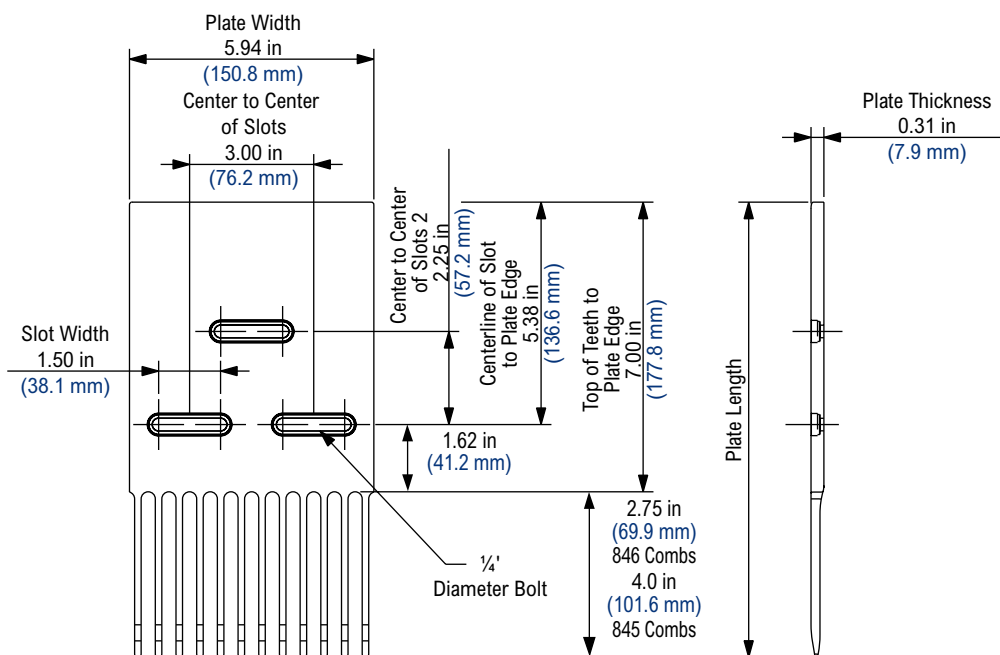
4707/6997 Transfer Comb Kit

Transfer Comb Kit Number	Transfer Plate Part Number	Screw Part Number	Slot Caps Part Number	Plate Length		Slot Width		Centerline of Slot to Plate Edge		Top of Teeth to Plate Edge		Center to Center of Slots		Approximate Weight	
				in	mm	in	mm	in	mm	in	mm	in	mm	lbs	kg
10131813	10070598	10075965	10075964	5.75	146.1	0.75	19.1	1.00	25.4	2.24	56.9	4.00	101.6	0.24	0.11
10131834	10075632	10075965	10069160	8.50	215.9	1.50	38.1	2.00	50.8	3.50	88.9	3.25	82.6	0.28	0.13

The 10070598 transfer comb is molded in white acetal. The 10075632 and 10069161 transfer combs are molded in a proprietary black internally lubricated high temperature material.

Transfer comb kits are supplied with 1/4 x 20 screws and slot caps.

For 4707 and 6997 chains only.



4707/6997 Retrofit Transfer Comb Kit

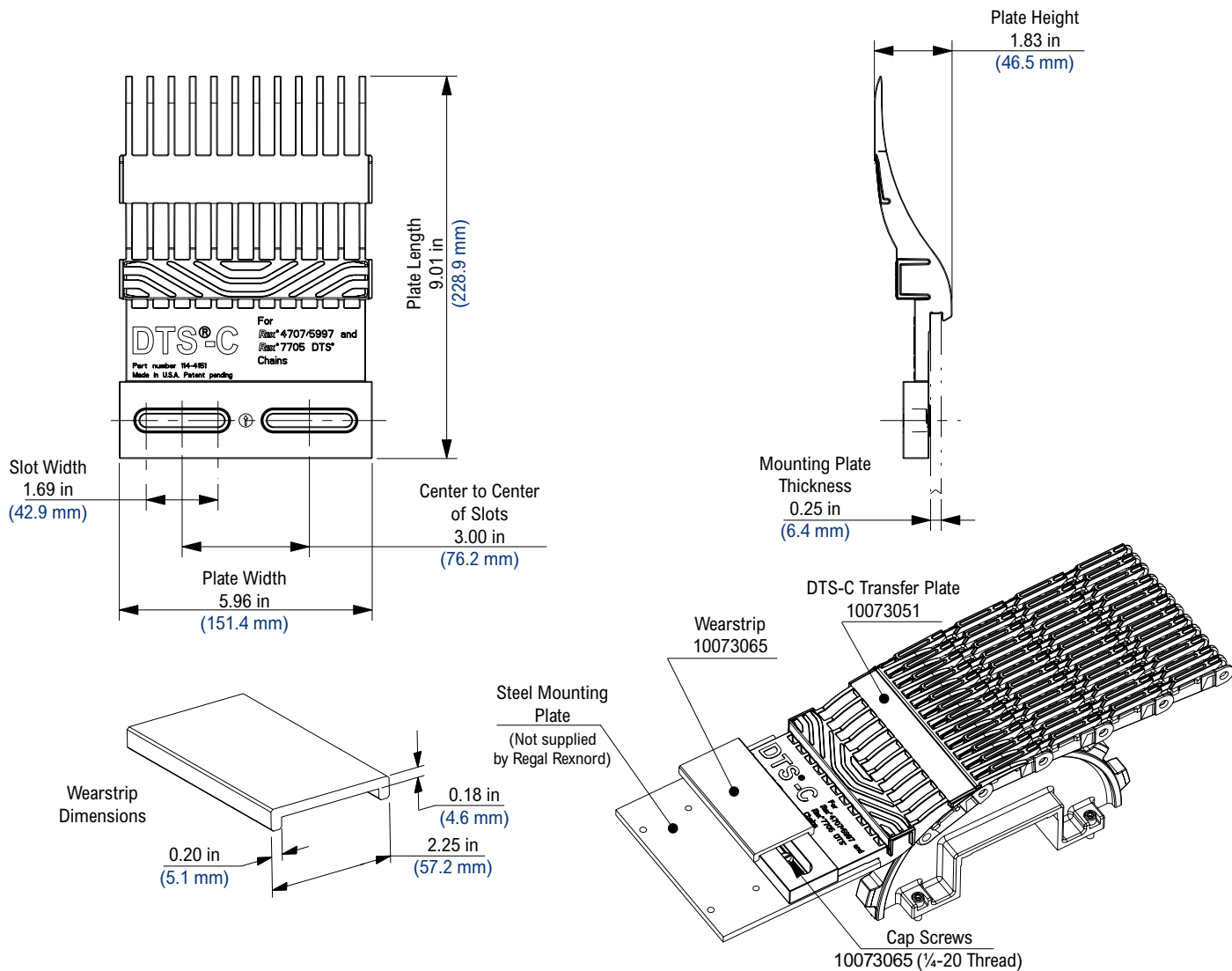
Transfer Comb Kit Number	Transfer Plate Part Number	Screw Part Number	Slot Caps Part Number	Plate Length		Slot Width		Distance From Centerline of Slot to Plate Edge		Distance From Top of Teeth to Plate Edge		Distance Between Center to Center of Slots		Approximate Weight	
				in	mm	in	mm	in	mm	in	mm	in	mm	lbs	kg
10131941	10074860	10075965	10069160	11.00	38.1	1.50	38.1	5.38	136.7	7.00	177.8	3.00	76.2	0.31	0.14
10323925	10074860	10177423	10069160	11.00	38.1	1.50	38.1	5.38	136.7	7.00	177.8	3.00	76.2	0.31	0.14
10131942	10074861	10075965	10069160	9.75	247.7	1.50	38.1	5.38	136.7	7.00	177.8	3.00	76.2	0.28	0.13
10131943	10074861	10177423	10069160	9.75	247.7	1.50	38.1	5.38	136.7	7.00	177.8	3.00	76.2	0.28	0.13

Transfer combs are molded in a proprietary black internally lubricated high temperature material.

The 10131941 and 10131942 transfer comb kits are supplied with 1/4 x 20 screws and slot caps.

The 10323925 and 10131943 transfer comb kits are supplied with M6 x 1 screws and slot caps.

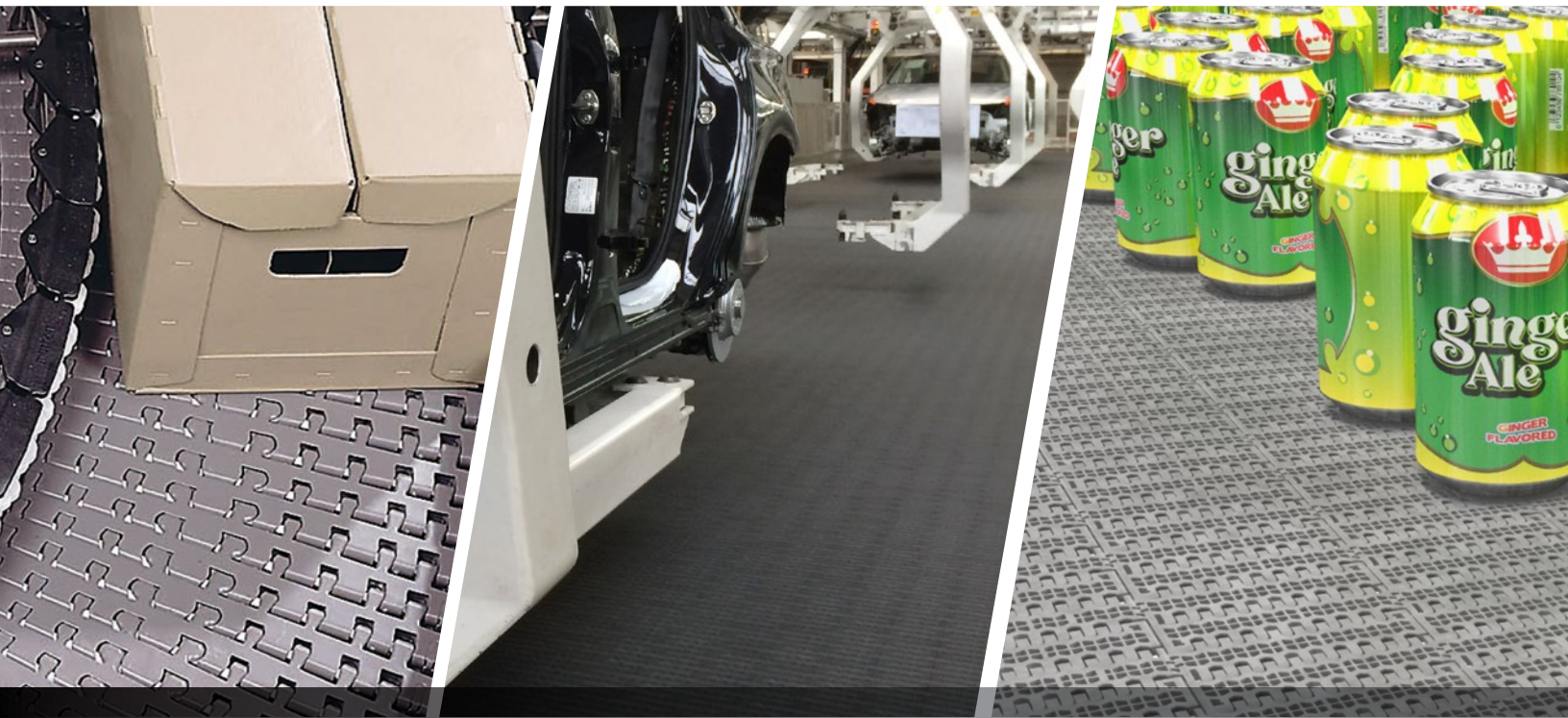
For 6997 chains only.



DTS-C Component Part Numbers

Component Description	Kit Part Number	Comb Part Number	Screw Part Number	Wearstrip Part Number (10 ft length)	For Use With:		
					Raised Rib Chain	DTS Chain	Takeaway Chain
DTS-C Comb Kit	10131580	10073051	10075965	NA	4707 or 6997	7705DTS-4.5	7705,7706 or 1055
Wearstrip	NA			10073065			

Each kit includes one comb and two mounting screws.
 Wearstrip is sold in 10 ft (3.048 m) lengths and is sold separately.



Excerpt from Rexnord® TableTop® and MatTop® Product Catalog 8rxCAT-en.



Automation and Motion Control Regal Rexnord

Contact us: rexnord.com/contact
regalrexnord.com

The proper selection and application of products and components, including assuring that the product is safe for its intended use, are the responsibility of the customer. To view our Application Considerations, please visit <https://www.regalrexnord.com/Application-Considerations>. To view our Standard Terms and Conditions of Sale, please visit <https://www.regalrexnord.com/Terms-and-Conditions-of-Sale> (which may redirect to other website locations based on product family).

"Regal Rexnord" is not indicative of legal entity. Refer to product purchase documentation for the applicable legal entity.
Regal Rexnord, Rexnord, MatTop and TableTop are trademarks of Regal Rexnord Corporation or one of its affiliated companies.
© 2023 Regal Rexnord Corporation, All Rights Reserved. MCC23024E • Form# 10623E

RegalRexnord™