



Please contact your Rexnord representative with any questions:

Rexnord FlatTop Europe
 Einsteinstraat 1, 2691 GV 's-Gravanzande
 The Netherlands
 Phone: +31 174 445 111
 After Hours Emergency
 Phone: +31 174 445 112
 (including countries not listed)

Rexnord FlatTop Italy
 Phone: +39 0522 639333

Rexnord FlatTop Germany
 Phone: 0800 588 8083

Rexnord FlatTop France
 Phone: 0805 540 444

Rexnord FlatTop India
 Phone: +91 040 23078243

Rexnord FlatTop China
 Phone: +86 21 52436100

Rexnord FlatTop North America
 1272 Dakota Drive
 Grafton, WI, 53024 USA
 Phone: 1-866-REXNORD
www.rexnord.com
www.rexnordflattop.com

Rexnord 1010 Series KleanTop Belt for Food Processing Applications

Maintaining the highest sanitation protocols is paramount to food processors. This important practice finds itself in the ability to clean and maintain conveyor belts in any area where pathogens can live and breed. With this in mind, the 1010 Series KleanTop™ belt was created, offering a belt that is one of the easiest to clean.

Durable and Effectively Cleaned

Key features of the 1010 Series KleanTop aim to ensure your operations are food safe. Over time, edges of plastic belts wear down and pose a risk to food production. The 1010 Series KleanTop is designed to eliminate the risk of product contamination by reinforcing the edges of the belt where breakdown can occur.

Hinge areas can be difficult to see and clean. This is problematic in certain food

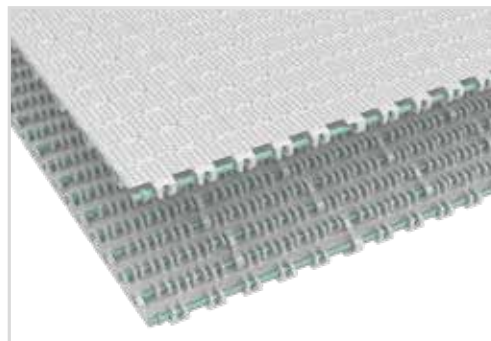
applications which require all areas of the conveying operation to be as sanitary as possible. The Rexnord 1010 Series features a completely open hinge design, exposing 60 percent of the rod, and enabling the hinge to be completely cleaned with less time, water and chemical usage.

Easy Assembly and Maintenance

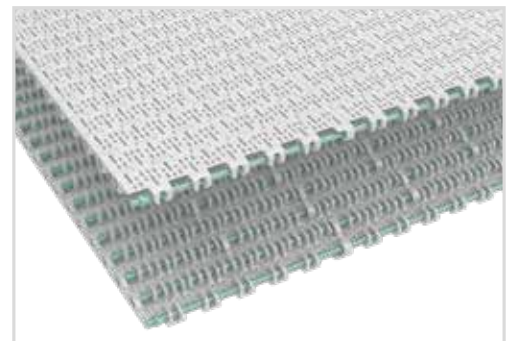
Some belts have complicated rod retention designs, raising the risk for rod and/or belt damage. The 1010 Series has a simplified rod retention system enabling easy assembly and disassembly with a simple screwdriver, keeping downtime as low as possible.

Superior Industry Performance

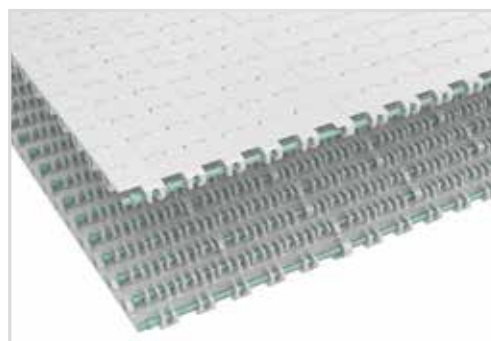
The combination of features and benefits allows for superior performance in baking, snack, fruit and vegetable, seafood and poultry applications.



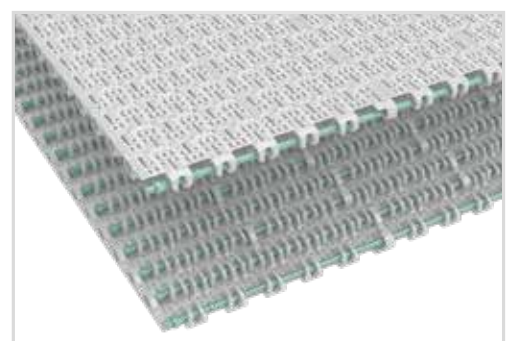
Rexnord 1011 Series KleanTop Belt (Nub Top)



Rexnord 1016 Series KleanTop Belt (Perforated Flat Top)



Rexnord 1015 Series KleanTop Belt (Flat Top)



Rexnord 1018 Series KleanTop Belt (Perforated Nub Top)

Product Information

- Plastic modular belt available in minimum width of two inches (50.8 mm) and increments of one inch (25.4 mm).
- Four surface top executions available: Nub Top, Flat Top, Perforated Flat Top and Perforated Nub Top (both with 20 percent open area).
- Cleanable machined sprockets in 10-, 12-, 16-, 18- and 20-teeth execution.
- Available in white and blue FDA approved materials for visual contrast and identification.
- Four inches (101.6 mm) high flight with non-stick ribs on both sides to reduce product sticking on incline and decline applications.
- Two inches (50.8 mm) and three inches (76.2 mm) high side guards are available.



Rexnord 1010 Series KleanTop Belt Bi-directional Sprocket KU1010



Rexnord 1010 Series KleanTop Belt Single Drive Sprocket KU1010



Rexnord 1010 Series KleanTop Belt Sideguard



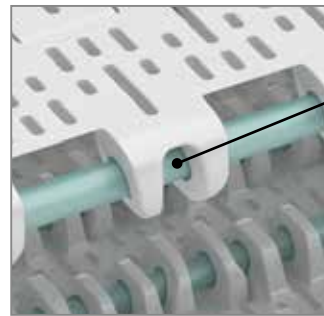
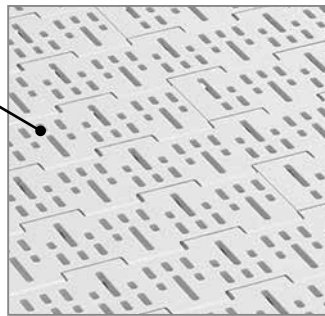
Rexnord 1010 Series KleanTop Belt Ribbed Flight six inches (152.4 mm) width, four inches (101.6 mm) height, one-inch (25.4 mm) side indent



Rexnord 1010 Series KleanTop Belt Ribbed Flight six inches (152.4 mm), four inches (101.6 mm) height

Open Area

20 percent open area with less product contact area and lower surface tension.

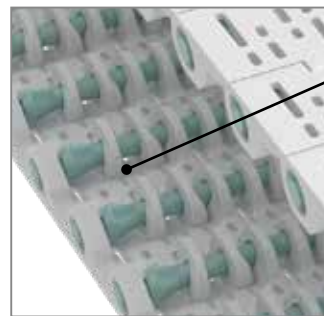
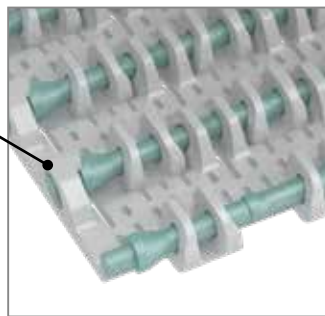


Open Hinge Design

60 percent of rod is exposed providing access for sanitation.

Rod Retention

Eliminates damage to rod and/or belt during assembly and disassembly.



Smooth Bottom Design

Maximizes sanitation effectiveness by eliminating areas where debris can accumulate.

Chain Type	Chain Material	Standard Rod Material	Working Load (max)		Backflex Radius (min)	Temperature Range °C	
			lbs/ft - N/m	lbs/ft ² / kg/m ²		Dry	Wet
1015 Flat Top	WHT-BHT	PBT	400 / 6,000	0.90 / 4.39	1.57 / 40	4 / 104	4 / 100
	WLT-BLT		350 / 5,000	0.98 / 4.78		-73 / 27	-73 / 27
	WSM		800 / 12,000	1.44 / 7.03		-40 / 82	-40 / 66
1016 Perforated Flat Top	WHT-BHT	PBT	400 / 6,000	0.90 / 4.39	1.57 / 40	4 / 104	4 / 100
	WLT-BLT		350 / 5,000	0.98 / 4.78		-73 / 27	-73 / 27
	WSM		800 / 12,000	1.44 / 7.03		-40 / 82	-40 / 66
1011 Nub Top	WHT-BHT	PBT	400 / 6,000	0.90 / 4.39	1.57 / 40	4 / 104	4 / 100
	WLT-BLT		350 / 5,000	0.98 / 4.78		-73 / 27	-73 / 27
	WSM		800 / 12,000	1.44 / 7.03		-40 / 82	-40 / 66
1018 Perforated Nub Top	WHT-BHT	PBT	400 / 6,000	0.90 / 4.39	1.57 / 40	4 / 104	4 / 100
	WLT-BLT		350 / 5,000	0.98 / 4.78		-73 / 27	-73 / 27
	WSM		800 / 12,000	1.44 / 7.03		-40 / 82	-40 / 66