



Why Choose Rexnord?

When it comes to providing highly engineered products that improve productivity and efficiency for industrial applications worldwide, Rexnord is the most reliable in the industry. Our commitment to customer satisfaction and superior value extends to every area of our business.

Delivering Lowest Total Cost of Ownership

The highest quality products are designed to help prevent equipment downtime, increase productivity and deliver dependable operation.

Valuable Expertise

An extensive product offering is accompanied by global sales specialists, customer service and maintenance support teams, available anytime.

Solutions to Enhance Ease of Doing Business

Our commitment to operational excellence means you benefit from getting the right products to the right place at the right time.

Why Choose Rexnord Lifelign Couplings?

Affordability

Lifelign® gear couplings are a cost-effective option. The industry's highest torque rating and largest bore capacity result in savings of up to 35% compared to the competition.

Increased Uptime

Long Term Grease (LTG) lubrication and a four-point seal provide maximum lubrication retention, extend the coupling life and contribute to reduced maintenance needs.

Better Equipment Protection

Lifelign's triple-crowned teeth are crowned on the root, tip and face to articulate freely, minimizing wear caused by misalignment. The triple-crowned teeth protects equipment from damaging loads by eliminating tip-loading while reducing backlash and radial clearances.

Interchangeability

AGMA bolt pattern, half for half interchangeability makes Lifelign a replacement option for other gear coupling brands.





Lifelign Couplings

- Large flex hubs accommodate high-torque applications in space-limited installations
- 28 sizes
- 13 models for general purpose, high-speed and high-torque applications
- Up to 43 inches (1067 mm) bore capacity
- Up to 72,450,000 in-lb (8,185,763 Nm) torque capacity
- Three-year, heavy-duty warranty

Process & Motion Control Products & Solutions For Your Business

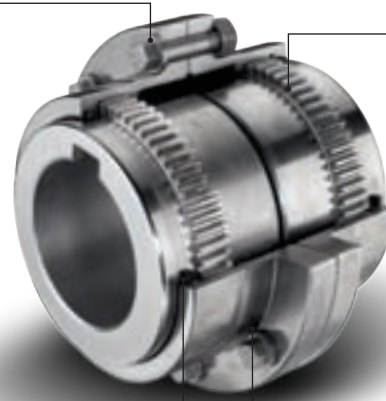
- Bearing
- Coupling
- Gear
- Industrial Chain & Conveying Equipment
- FlatTop
- Product Services

Industries Served

- Aggregates
- Construction Machinery
- Forest Products
- Material Handling
- Mining
- Pumps & Compressors
- Steel

Reduced head capscrews and non-turning locknut allow one-wrench tightening

Triple-crowned AGMA 20° tooth design with crowning at the root, tip and face of each tooth



Viton® seals provide long life in high temperature applications and four-point seal improves lubrication retention during misalignment conditions

Lubrication plug locations are ideal for effective application of grease

