



Why Choose Rexnord?

When it comes to providing highly engineered products that improve productivity and efficiency for industrial applications worldwide, Rexnord is the most reliable in the industry. Our commitment to customer satisfaction and superior value extends to every area of our business.

Delivering Lowest Total Cost of Ownership

The highest quality products are designed to help prevent equipment downtime, increase productivity and deliver dependable operation.

Valuable Expertise

An extensive product offering is accompanied by global sales specialists, customer service and maintenance support teams, available anytime.

Solutions to Enhance Ease of Doing Business

Our commitment to operational excellence means you benefit from getting the right products to the right place at the right time.

Why Choose Rexnord Elastomeric Couplings?

Ideal for All Industries

Rexnord® Elastomeric Omega®, Viva® and Wrapflex® couplings are non-lubricated, material flexing couplings used in a variety of applications in many industries. These products have excellent vibration dampening capability and high misalignment capacity, providing extended life to connected equipment.

Reduces Maintenance Costs and Downtime

Designed for quick replacement, Rexnord elastomeric elements can be installed without moving the driving or driven equipment from their mounted locations or removing the hubs.

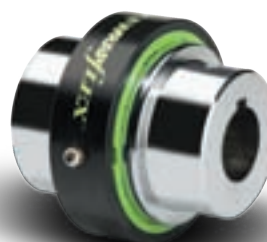
Designed for Specific Applications

Each of the elastomer coupling designs feature attributes that meet unique customer needs. The Wrapflex coupling incorporates a patented hub design to reduce operating thrusts on seals and bearings. The Omega coupling is available in the HSU model designed specifically for hot and humid applications. The Viva coupling incorporates overload protection.

Viva



Wrapflex



Omega





Omega, Omega HSU and Viva Brands

- Split-in-half flex element design for efficient installation and replacement
- Mounting hole patterns allow for a wide range of shaft gaps: from 0.25 inches (6 mm) to 11.81 inches (300 mm)
- Non-lubricated and low-maintenance
- 15 Omega sizes, 12 Viva sizes
- Up to 11 inches (279 mm) bore capacity
- Up to 340,200 in-lb (38,440 Nm) torque capacity
- Up to 7,500 rpm
- ATEX certified

Wrapflex Brand

- Polyurethane element has excellent wear and chemical resistance and an operating temperature range of -40°F to 200°F
- Patented hub and flex element design ensure long life
- 12 sizes
- Close-coupled and spacer designs available to accommodate shaft spacing
- Up to 133,000 in-lb (15,027 Nm) torque capacity
- Up to 7¼ inch (184 mm) bore capacity
- Up to 4,500 rpm
- ATEX certified

Process & Motion Control Products & Solutions For Your Business

- Bearing
- Coupling
- Gear
- Industrial Chain & Conveying Equipment
- FlatTop
- Product Services

Industries Served

- Aggregates
- Air Handling
- Construction Machinery
- Food & Beverage
- Forest Products
- Material Handling
- Mining
- Pumps & Compressors
- Heavy Duty Truck
- Steel

