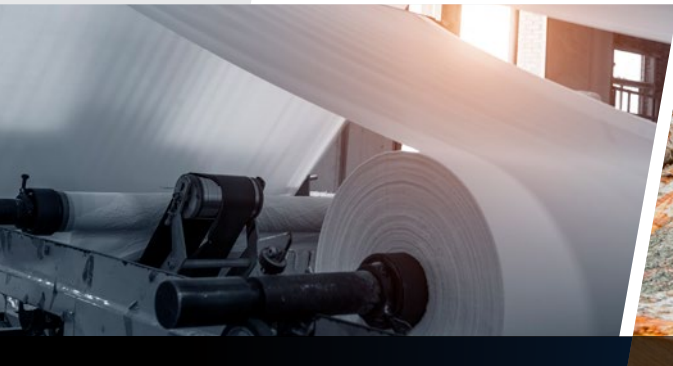


**FALK®**



**FALK® STEELFLEX®  
GRID COUPLINGS**  
WE LEAD. MANY FOLLOW.



**RegalRexnord**

# Falk® Steelflex® couplings ... there is no substitute.

“Our customer runs close to 100 Falk Steelflex couplings at a coal-fired power plant. This is a very harsh environment. There’s a lot of coal dust, vibration and impact, and a lot of hard torque through the shafting. We love these couplings.”

– Industrial Distributor, Florida

## THE INDUSTRY STANDARD FOR DEMANDING APPLICATIONS

Falk Steelflex couplings are specified in many of the most demanding applications in the world. They are exposed to the dust within cement and coal handling facilities, and the extreme temperatures of desert and arctic mines, all while operating under demanding torque conditions.

The high-impact loads placed on conveyors, shredders and mixers will push the limits on any coupling. The vibratory loads on high-speed applications such as pumps or compressors can cause some couplings to break down. Falk Steelflex couplings can reduce the impact of these loads on your equipment by up to 30%. To become the standard in these industries you need to be tough.



Falk Steelflex after 400,000 cycles



Dodge\*\* grid element after 70,000 cycles



Lovejoy\*\* grid element after 30,000 cycles

## UNSURPASSED STRENGTH

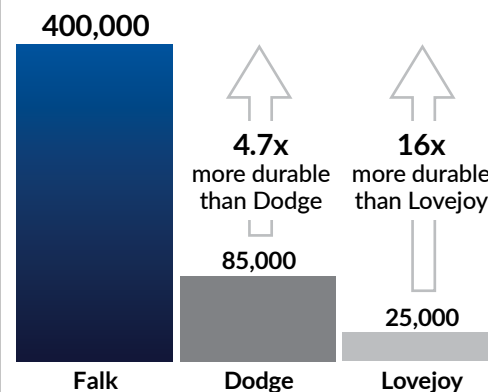
The leading causes of coupling failure are misalignment and high-impact and vibratory loads. Third-party testing has shown that Falk Steelflex couplings are superior to Dodge or Lovejoy branded grid coupling products.

**Falk Steelflex grid couplings are:**

- Up to 16 times more durable in impact loading applications
- Capable of surviving up to two times the stated misalignment limits

While these tests were conducted under extreme conditions, high loads and high misalignment are very common. Equipment is commonly pushed beyond the design limits, and misalignment is often present due to human error or natural settling. These test results are the reason Falk Steelflex couplings have the largest installed base of any grid coupling in the world.

### Falk Steelflex Couplings Outperform the Competition in Benchmark Testing (Average Cycles to Failure)



\* The following trademarks or trade names are owned by or under the control of a third party and are not owned by or under the control of Regal Rexnord Corporation or its affiliates. Lovejoy: Lovejoy, Inc.; Dodge: ABB ASEA Brown Boveri, Ltd.



## TESTIMONIALS

*"These pumps run for several days at a time after heavy rains or thunderstorms. We estimate that the couplings were 20 years old before the grids were replaced. The hubs showed no signs of wear."*

– Industrial Distributor, Louisiana

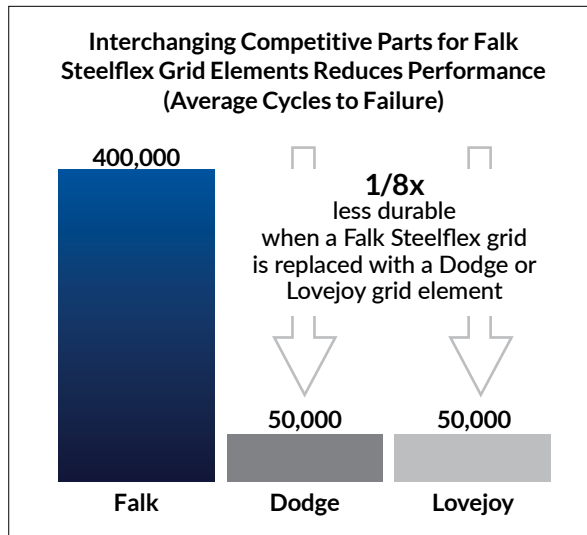
*"The same Falk Steelflex couplings have been driving conveyors at a copper mine in Morenci for 40 years."*

– Industrial Distributor, Arizona

### THERE IS NO SUBSTITUTE FOR FALK® STEELFLEX® COUPLINGS

How does Regal Rexnord manufacture a superior product? It comes down to design experience and manufacturing quality controls. While some competitors simply purchase and re-brand coupling components, our facilities have specialized manufacturing equipment used to machine and treat our components. Strict quality controls result in products that live up to the Falk Steelflex name.

Many competitors have copied our design, claiming 'fit-for-fit' components. Although the products have the same dimensions, competitors have failed to engineer their products and components to match the quality of Falk Steelflex couplings. Cycle tests have shown that **replacing a Falk Steelflex grid element with Dodge®\* or Lovejoy®\* grid elements will reduce durability by 87.5%.**

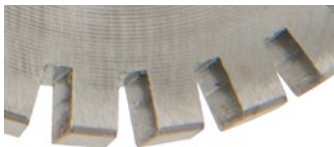


### PROVEN PERFORMANCE EQUALS LOWER COST OF OWNERSHIP

For couplings, downtime is often the most important factor in determining the total cost of ownership. Relative to other grid couplings, Falk Steelflex couplings have been proven to minimize downtime.

Our grid elements have been shown to outlast the competition, resulting in fewer replacements and less frequent inspections. Fewer grid failures translate to less wear on hub teeth. Falk Steelflex couplings require far fewer hub replacements, saving you time and money spent heating components, moving equipment, and realigning the shafts. You can rely on Falk Steelflex couplings to keep your equipment running and minimize work for your maintenance crew.

To maximize the life of your Falk Steelflex couplings, we recommend using our engineered Long Term Grease (LTG). A Falk Steelflex coupling installed with LTG will save you and your team the time and effort of replacing the lubricant within the first five years.



After 400,000 test cycles, Falk Steelflex hub shows no wear with smooth, machined surfaces.



Competitive hub shows pitting on teeth and burrs on tooth edges from broken grid element.



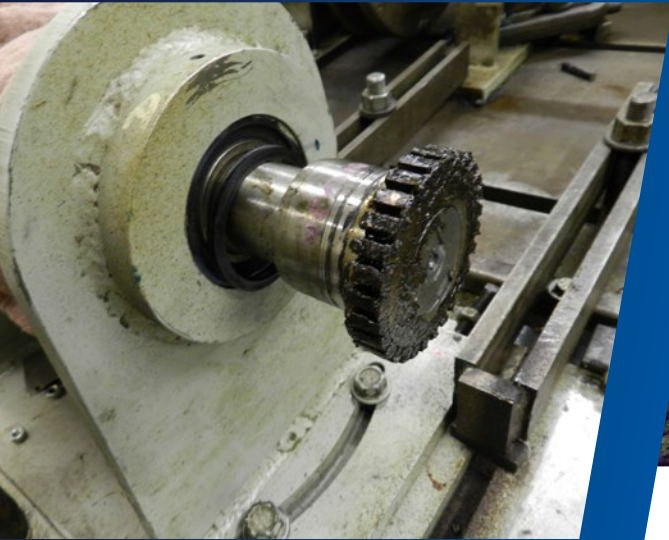
Continued use with broken grid elements will lead to complete destruction of hub teeth.

**5** FIVE YEAR HEAVY-DUTY WARRANTY

\* The following trademarks or trade names are owned by or under the control of a third party and are not owned by or under the control of Regal Rexnord Corporation or its affiliates. Lovejoy: Lovejoy, Inc.; Dodge: ABB ASEA Brown Boveri, Ltd.

## INDUSTRIES SERVED

Power Generation • Food Processing • Water • Steel • Mining  
Cement • Chemical • Pulp and Paper • Ports



## BUILT AROUND YOUR NEEDS

Regal Rexnord is committed to your satisfaction and the superior value of our products. To meet your needs, we offer Falk Steelflex couplings in a comprehensive range of bore, speed and torque capacities, ensuring that the right product is always available for every application:

- 25 sizes
- 11 models including high-speed, spacer, flywheel, brake and controlled torque
- Up to 20 inches (508 mm) bore capacity
- Up to 8,250,000 inch-pounds (932,126 Nm) torque capacity
- Up to 10,000 rpm
- Five-year heavy-duty warranty when lubricated with LTG

All Falk Steelflex couplings are manufactured at dedicated Regal Rexnord™ facilities, resulting in exceptional consistency in materials used throughout the product range.

With more than 80 years of product design experience and a dominant market share you can rely on Falk Steelflex couplings to provide outstanding value, dependable performance and the lowest total cost of ownership.

## THE BEST PRODUCT FOR YOUR APPLICATION

Regal Rexnord has the experience and design expertise to help you select the right coupling from our broad portfolio of products. The Customer Care Team for your region can help you with all quotations, orders, field sales support, product selection, pricing, lead times, order processing, order status, expedites, product information and technical support: [www.regalrexnord.com/contact](http://www.regalrexnord.com/contact).

# FALK®

### Motion Control Solutions Regal Rexnord

Contact us: [rexnord.com/contact](http://rexnord.com/contact)

[regalrexnord.com](http://regalrexnord.com)

The proper selection and application of products and components, including assuring that the product is safe for its intended use, are the responsibility of the customer. To view our Application Considerations, please visit <https://www.regalrexnord.com/Application-Considerations>. To view our Standard Terms and Conditions of Sale, please visit <https://www.regalrexnord.com/Terms-and-Conditions-of-Sale> (which may redirect to other website locations based on product family).

"Regal Rexnord" is not indicative of legal entity. Refer to product purchase documentation for the applicable legal entity.

Regal Rexnord, Falk and Steelflex are trademarks of Regal Rexnord Corporation or one of its affiliated companies.

© 2012, 2022 Regal Rexnord Corporation, All Rights Reserved. MCB22147E • Form# CP1-001E

 **RegalRexnord™**